

About Town

Linda Fogarty, daughter of Mr. and Mrs. Dennis E. Fogarty of 36 Niles Dr. is attending Utes (N.Y.) College.

The Elks Club will have a regional dinner for Harry Wager, past exalted ruler, at 6:30 tonight at the Elks Home.

Guidance Topic For Workshop By Archdiocese

Guidance counselors from secondary parochial schools in the Archdiocese of Hartford will attend a two-day workshop at East Catholic High School tomorrow and Friday.

All secondary guidance counselors in the Catholic school systems, encompassing 9,853 students in 11 high schools throughout Hartford, Litchfield and New Haven Counties, will attend.

The workshop will be conducted by the Rev. George H. Moreau, O.M.I., consultant for guidance services of the National Catholic Educational Association. Father Moreau holds a doctorate in counseling psychology.

Findings resulting from the workshop will be discussed Friday from 2 to 4 p.m. at a meeting of all high school principals, guidance counselors and Father Moreau.

Frozen Food Specials

SHURFINE—20-Ounce MINCE OF APPLE PIES 33c

SHURFINE Meat Pies 4 for 79c BEEF-CHICKEN-TURKEY (2 for 45c)

You've heard of Titus Moody talk about the goodness of Pepperidge Farm turnovers.

PEPPERIDGE FARM APPLE TURNOVERS each 39c Save 50c when you buy 5 at this price

PEPPERIDGE FARM APPLE STRUDEL each 49c Save 50c when you buy 5 at this price

Buy large Jiffon Oven Cleaner featured at \$1.39 and save 10c.

NEW BY BETTY CROCKER BANANA NUT MUFFINS OATMEAL MUFFINS 2 for 75c

BRISKET CORNED BEEF These selected lean U. S. Choice briskets are guaranteed to give you the finest corned beef you ever tasted.

DUBUQUE HAMS These fully cooked hams are unique in flavor and trim, being 90% boneless.

With two expert sausage men on our meat staff, it's time for a home style sausage special.

HOME STYLE SAUSAGE MEAT 59c Pinchurst Medium Hot ITALIAN STYLE SAUSAGE 79c

BLOCK ISLAND SWORDFISH Down 4c. This week on center cuts of this delicious boneless fish... Lb. 95c



HOUSE & HALE SHOE SALE! GROUP OF BETTER MEN'S - BOYS' SHOES

4.99 VALS. to \$14.

GROUP OF LADIES' WHITE DUTY SHOES 6.97

GROUP OF BOYS', GIRLS' FAMOUS BRAND SHOES 4.99

VALS. to \$10.

PERMANENT PRESS CORDUROY JEANS by WRANGLER 6.99

Pre-shrunk, medium wale corduroy. You can depend on this famous name.

Discontinued styles of Weather Birds, Striped Rites, Jumping Jacks, Oxford, nylon, velvets

VALS. to \$10.

KLH STEREO MUSIC SYSTEMS NORMAN'S STOP IN FOR AN EAR FILLING DEMONSTRATION 443 HARTFORD RD. MANCHESTER

HOUSE AND HALE since 1853 MAIN STREET-MANCHESTER

SPECIAL—MEN'S PERMANENT PRESS DRESS SLACKS 2 Pair \$9 4.88 50% kodel polyester and 50% combed cotton blend slacks... never needs pressing! Ivy League styling with belt loops, cuffs. Sizes 38 to 42.

SPECIAL PURCHASE MEN'S VELOUR SHIRTS OR SUEDE PONDEROSAS Regular \$3.99 each 3.57

Ladies' Easy Care Shirtwaist DRESSES 2.99 Wash and wear Avril and Cotton—Snap front closing, self tie belts. Delightful small prints. Perfect for at-home and casual wear! Sizes 10-18.

Ladies' Pigskin LEATHER GLOVES 1.99 Marvelous buy for such quality! Slight imperfections will not affect the wear.

PERMANENT PRESS CORDUROY JEANS by WRANGLER 6.99

Pre-shrunk, medium wale corduroy. You can depend on this famous name.

Discontinued styles of Weather Birds, Striped Rites, Jumping Jacks, Oxford, nylon, velvets

VALS. to \$10.

PLEASE NOTE... IN THE FUTURE IS THE TOWN GOING TO HAVE TO SPEND \$1,000,000 IN DOWNTOWN UTILITY REPAIRS? RENEWAL WILL TAKE CARE OF THIS — AND SO MUCH MORE! VOTE YES FOR RENEWAL ON OCT. 3

Fall Sale 3 DAYS ONLY Thursday • Friday • Saturday SPECIAL—MEN'S PERMANENT PRESS DRESS SLACKS... ALL-WEATHER COATS \$21.88... Ladies' WARM COTTON FLANNEL PAJAMAS 1.99... Boys', Girls' Warmly Lined SNOW SUITS 8.88... Misses', Women's New Selection DAYTIME DRESSES 5.88

Average Daily Net Press Run For the Week Ended September 24, 1966 14,757

Manchester Evening Herald

VOL. LXXXV, No. 306 (THIRTY-TWO PAGES—TWO SECTIONS) MANCHESTER, CONN., THURSDAY, SEPTEMBER 29, 1966

The Weather Rain developing tonight, low in 50s; cloudy tomorrow, continued cool, high in 60s.

State News Stamford's Mayor Mum On Housing

STAMFORD (AP) — Mayor Thomas B. Mayers declined comment today on a charge of "riot-provoking demagoguery" leveled by the spokesman for property owners opposed to a plan for building low-cost housing throughout Stamford.

UN Council To Discuss Thant Role

UNITED NATIONS, N.Y. (AP) — The U.N. Security Council at a meeting today was expected to discuss proposals of Secretary General U Thant of Burma to continue as secretary general or to resign.

Job Training WASHINGTON (AP) — The Labor Department has approved two contracts for job training projects in Connecticut.

Youths Bound Over Bristol (AP) — Accompanied by their parents and defense attorneys, three youths charged with causing a motorist's death by dropping a rock from a highway overpass were ordered bound over to Superior Court by a Circuit Court judge.

Maddox Scores Upset In Georgia Primary ATLANTA, Ga. (AP) — Lester G. Maddox, an ardent segregationist running a shouting Democratic nomination for Governor of Georgia, won a moderate victory in the state's primary election today.

Bernard Gimbel Dies, Ruled Store Empire NEW YORK (AP) — Bernard Gimbel, retired chairman of the board of Gimbel Bros. department stores, died today after a long illness.

Wreck Named For Second Moon Flight MANNED SPACE CENTER, Houston, Tex. (AP) — A veteran of two space trips and a pair of new recruits have been picked to fly the second three-man Apollo mission in the nation's drive to land men on the moon by 1969.

Dominican Republic Battered by Storm SANTO DOMINGO, Dominican Republic (AP) — Hurricane Hattie, with 100-mile winds, tropical storm force, hit the Dominican Republic today, battering the island.

Economists Foresee Recession by 1970 WASHINGTON (AP) — Nearly three-fourths of the country's industry economists foresee a recession by 1970 and half of the group expects it to start in next year.

Albania Bais Unhelpful UNITED NATIONS, N.Y. (AP) — Communists Albanian, regarded as the voice of Peking in the United Nations, rejected today any role by the world organization in Vietnam.

Hard-line segregationist Lester Maddox receives a piece of cake from his wife in celebration of his victory over former Gov. Ellis Arnall in the Georgia Democratic primary for governor. (AP Photofax)

Too Secure ECKSTER, R.I. (AP) — The New Haven Railroad put a new lock on a gate blocking one of its crossings here, but no one gave keys to the residents of the dead end street it cuts off.

Viet Casualties High Worst Week Yet For U.S. Troops SAIGON, South Viet Nam (AP) — U.S. forces suffered more casualties in South Viet Nam last week than in any week of the war.

Riot Guardsmen Get 'Shoot to Kill' Order SAN FRANCISCO (AP) — Police and National Guardsmen backed up the officers later to quell the rioting.

Crew Named For Second Moon Flight MANNED SPACE CENTER, Houston, Tex. (AP) — A veteran of two space trips and a pair of new recruits have been picked to fly the second three-man Apollo mission in the nation's drive to land men on the moon by 1969.

New Riots Put Down In Frisco SAN FRANCISCO (AP) — Police and National Guardsmen backed up the officers later to quell the rioting.

Bernard Gimbel Dies, Ruled Store Empire NEW YORK (AP) — Bernard Gimbel, retired chairman of the board of Gimbel Bros. department stores, died today after a long illness.

Maddox Scores Upset In Georgia Primary ATLANTA, Ga. (AP) — Lester G. Maddox, an ardent segregationist running a shouting Democratic nomination for Governor of Georgia, won a moderate victory in the state's primary election today.

Wreck Named For Second Moon Flight MANNED SPACE CENTER, Houston, Tex. (AP) — A veteran of two space trips and a pair of new recruits have been picked to fly the second three-man Apollo mission in the nation's drive to land men on the moon by 1969.

Dominican Republic Battered by Storm SANTO DOMINGO, Dominican Republic (AP) — Hurricane Hattie, with 100-mile winds, tropical storm force, hit the Dominican Republic today, battering the island.

Economists Foresee Recession by 1970 WASHINGTON (AP) — Nearly three-fourths of the country's industry economists foresee a recession by 1970 and half of the group expects it to start in next year.

Albania Bais Unhelpful UNITED NATIONS, N.Y. (AP) — Communists Albanian, regarded as the voice of Peking in the United Nations, rejected today any role by the world organization in Vietnam.

Hard-line segregationist Lester Maddox receives a piece of cake from his wife in celebration of his victory over former Gov. Ellis Arnall in the Georgia Democratic primary for governor. (AP Photofax)



Shot-gun armed police secure corner of Third and Newcomb Streets in San Francisco, hub of racial violence that has plagued the city for two consecutive nights. National Guardsmen backed up the officers later to quell the rioting. (AP Photofax)

Riot Guardsmen Get 'Shoot to Kill' Order

SAN FRANCISCO (AP) — Police and National Guardsmen backed up the officers later to quell the rioting. About 75 percent of his heavily armed men had helped put down racial rioting a year ago in the Los Angeles Watts area.

Crew Named For Second Moon Flight

MANNED SPACE CENTER, Houston, Tex. (AP) — A veteran of two space trips and a pair of new recruits have been picked to fly the second three-man Apollo mission in the nation's drive to land men on the moon by 1969.

New Riots Put Down In Frisco

SAN FRANCISCO (AP) — Police and National Guardsmen backed up the officers later to quell the rioting. About 75 percent of his heavily armed men had helped put down racial rioting a year ago in the Los Angeles Watts area.

Bernard Gimbel Dies, Ruled Store Empire

NEW YORK (AP) — Bernard Gimbel, retired chairman of the board of Gimbel Bros. department stores, died today after a long illness.

Maddox Scores Upset In Georgia Primary

ATLANTA, Ga. (AP) — Lester G. Maddox, an ardent segregationist running a shouting Democratic nomination for Governor of Georgia, won a moderate victory in the state's primary election today.

Wreck Named For Second Moon Flight

MANNED SPACE CENTER, Houston, Tex. (AP) — A veteran of two space trips and a pair of new recruits have been picked to fly the second three-man Apollo mission in the nation's drive to land men on the moon by 1969.

Dominican Republic Battered by Storm

SANTO DOMINGO, Dominican Republic (AP) — Hurricane Hattie, with 100-mile winds, tropical storm force, hit the Dominican Republic today, battering the island.

Economists Foresee Recession by 1970

WASHINGTON (AP) — Nearly three-fourths of the country's industry economists foresee a recession by 1970 and half of the group expects it to start in next year.

2 8 9

S E P

2 8 9

Bulletin ALBANIA Bais Unhelpful UNITED NATIONS, N.Y. (AP) — Communists Albanian, regarded as the voice of Peking in the United Nations, rejected today any role by the world organization in Vietnam.

Coventry First of Two Voter Sessions Will Be Conducted Saturday

The first of two regular voter-making sessions before elections will be held from 9 a.m. to 1 p.m. Saturday in the registrars' room of the town building on Rt. 31.

The other session will be from 8 a.m. to 8 p.m. here.

The club will be a special two-hour session Nov. 7 only for those persons whose rights have matured between Oct. 15 and Nov. 7.

The registrars remind naturalized citizens to bring their naturalization papers with them to a voter-making session.

GOP Opens Office

The Republican town committee will have its official headquarters in the space in the Sebert Building formerly occupied by the post office. Plans are to have the October meeting of the committee at 8 p.m. Tuesday held here. This will also be used for the October Day headquarters for the First District. Headquarters for that day in the Second District will be announced.

Appointments made by GOP

The DALE CARNEGIE COURSE for Men & Women IS MOVING... EXPANDING

because more people and more companies want it!

HERE ARE ... **10 WAYS**

THE DALE CARNEGIE COURSE FOR MEN AND WOMEN WILL HELP YOU!

- Develop Self-Confidence
- Increase Your Ability to Deal with People
- Win More Friends
- Control Your Emotions and Your Ideas
- Prepare for Leadership
- Increase Your Income
- Improve Your Personality
- Improve Your Ability to Remember Names
- Conquer Fear
- Speak Effectively

CREATIVE CLASSES

Classes in creative crafts are underway at the home of Mrs. W. F. Keller on Rt. 44A, Bolton. Mrs. Keller has invited all neighbors to lunch at noon, pants. She is also a member of bringing their own sandwiches with beverages and dessert to be provided by her. After lunch a short movie on the work of the ARC will be shown. Mrs. E. Spurling of the Rockville office at all levels in schools in Man-

FREE Demonstration Meeting in MANCHESTER

Whitton Library Auditorium 85 No. Main St., No. Manchester

THURSDAY, SEPT. 29th 7:30 P.M.

Be Our Guest! No Cost! No Obligation!

Dale Carnegie Courses

Presented by Institute Development Management R. Mitchell, Treasurer, Area Manager, 645 Framington Ave., Hartford

TEL 232-6000

Sheinwold on Bridge LEADING A TRUMP ABANDONS CONTROL

By ALFRED SHEINWOLD
It is a sound idea to lead a trump when you know that declarer must ruff his side suit. It is a poor idea to lead a trump when declarer may set up dummy's long suit instead of his own.

Opening lead — two of spades. West discovered he was holding the wrong lead as soon as he saw the dummy. He had simply handed control over to South instead of striking a blow for his own side.

South drew four rounds of trumps and led diamonds to force out the ace. East returned a heart, but South stepped up with the ace of hearts and led a club to dummy's ace. Then he discarded all of his losers on the diamonds, making a total of twelve tricks.

"Did we give the lead?" North asked anxiously.

"Don't give it a second thought," South assured him. "I can't even make four against a sensible opening lead."

South was right. West must make an astonishing lead, such as dummy had advertised a strong diamond suit that may provide discards for South's losers. West should lead a club in the hope of grabbing a club trick or two before the club gets them.

The club lead would not protect an immediate trick but would have the magic effect of knocking out the only entry to the diamonds.

South must try the heart finesse after taking the ace of

Crew Named For Second Moon Flight

Continued from Page One

At least Dec. 16 for the history-making rendezvous flight during which they caught Gemini 7.

Cunningham, 34, and Eisele, 34, became astronauts at the same time, in October, 1963, and neither had previously been assigned to a prime position in space.

Prior to joining the space corps, Eisele was a test pilot at another government facility at the Air Force Research and Development Center at Kirtland Air Force Base, N.M. He has logged more than 3,000 hours in jet aircraft.

Cunningham holds a masters degree in physics from the University of California, and lacks only a thesis to complete work on a doctorate. A native of Creston, Iowa, he joined the Navy in 1961, where he learned to fly. He later resigned from active duty, but kept his flying status as a Marine reservist.

CREATIVE CLASSES

Classes in creative crafts are underway at the home of Mrs. W. F. Keller on Rt. 44A, Bolton. Mrs. Keller has invited all neighbors to lunch at noon, pants. She is also a member of bringing their own sandwiches with beverages and dessert to be provided by her. After lunch a short movie on the work of the ARC will be shown. Mrs. E. Spurling of the Rockville office at all levels in schools in Man-

CREATIVE CLASSES

Classes in creative crafts are underway at the home of Mrs. W. F. Keller on Rt. 44A, Bolton. Mrs. Keller has invited all neighbors to lunch at noon, pants. She is also a member of bringing their own sandwiches with beverages and dessert to be provided by her. After lunch a short movie on the work of the ARC will be shown. Mrs. E. Spurling of the Rockville office at all levels in schools in Man-

MANCHESTER GIRL HUNT EVER!

The Strangest Girl Hunt Ever!

James Garner Jean Simmons Suzanne Pleshette - Angela Lansbury

BUDDWING

EXPLOSIVE EMOTIONS FROM THE TORRID HEARTS OF GINA LOLLUBRIGIA ANTHONY FRANCISCA ERNEST BODENKE

GO NAKED IN THE WORLD

STANLEY WARNER

STATE SATURDAY AT 2 P.M.

A NEW TARZAN THE APE MAN

TECHNICOLOR

DENNY MILLER in THE NEW TARZAN

CEASAR DANOWA JOANNA BARNES ROBERT DOUGLAS

5 Cartoons

BURGER CHEF

HAMBURGERS

People on the go in MANCHESTER go BURGER CHEF at 235 MAIN STREET

Proudest Fries in town!

only 15¢

We have to keep bragging and bragging, but when you're eating BURGER CHEF FRIES, you're just to be the best in town.

Try some today and find out what we so proud about! Finest Idaho potatoes, deep fried to golden brown perfection, crisp and hot. For snacks or with a Burger Chef hamburger. 11-1-5 O O D EVERY TIME!

Home of the World's Greatest Hamburgers—Still Only 15¢

CHICKEN BAR-B-Q FALL FOLIAGE

EXCURSION HARTFORD - MANCHESTER TO BRATTLEBORO, VERMONT via N.H.R.R. - Central Vermont Ry.

SUNDAY, OCTOBER 2, 1966

THROUGH SERVICE—NO CHANGE OF CARS

Tickets: New Haven R.R. Ticket Office, Hartford

BOLTON LAKE RESTAURANT and HOTEL

ROUTE 44A, BOLTON—643-9731

2 BANDS

Country style music and dancing in authentic western atmosphere every Friday, Saturday and Sunday in our beautiful Bolton Lake building while you enjoy your favorite foods and legal beverages.

DINING

Dine in elegance in our main dining room and terrace overlooking beautiful Bolton Lake while enjoying the soft mood music of the Lou Mal Trio.

Rib Roast, Lobster, Steak Our Specialty

Special Seafood Menu Every Friday

Model Rooms Available—Double and Single Occupancy

PIZZAS and GRINDERS to GO

Wedding and Banquet Facilities Available—Up to 400 People

Bolton Lake Hotel

FRIDAY NIGHT SEAFOOD Specials!

FRANK'S CAFE

The Family Restaurant CORNER MAIN & PEARL

HERE'S VARIETY!

Chicken Cacciatore
Veal Scallops
Short Steak
Baked Stuffed Jumbo Shrimp

\$1.75 Complete Dinner \$1.00 Extra

Complete Lobster Dinner
Friday Only
New Low Price **\$2.95**

Specializing in Fine Italian-American Meals!

Fresh breads and pastries made daily. Featuring Daily Specials As Always

Legal Beverages
TEL. 649-5544

Vernon 'Octoberfest' Set Saturday To Raise Music Shell Funds

The Rotary Club "Octoberfest" will be held Saturday at the town hall in Vernon. The event is a fund-raising party for the Vernon Music Shell. The party will be held from 7 to 11 p.m. and will feature a variety of musical acts. The proceeds from the event will be used to purchase new musical instruments for the school.

Events In Capital

New Cliff Dweller

WASHINGTON (AP) — The new Cliff Dweller, a \$100,000 apartment building, is under construction in the city center. The building will have 100 units and will be completed by next year.

Conferees Meet

WASHINGTON (AP) — At least part of President Johnson's cabinet will meet in the White House today. The meeting is expected to discuss the Vietnam situation and the economy.

Dr. Marziano Again Raises Consolidation Question

Town Health Director Dr. Nicholas A. Marziano, at the town meeting, raised the question of consolidating the town's utility services. He suggested that the town consider merging its water and sewer services with those of the surrounding towns.

Barry, LaBonne Debate Tuesday

Next Tuesday's luncheon meeting of the Manchester Civitan Club will feature a debate between Democrat Barry and Republican LaBonne. The debate will focus on the candidates' views on the economy and social issues.

STANLEY WARNER STATE SATURDAY AT 2 P.M.

A NEW TARZAN THE APE MAN

TECHNICOLOR

DENNY MILLER in THE NEW TARZAN

CEASAR DANOWA JOANNA BARNES ROBERT DOUGLAS

5 Cartoons

CREATIVE CLASSES

Classes in creative crafts are underway at the home of Mrs. W. F. Keller on Rt. 44A, Bolton. Mrs. Keller has invited all neighbors to lunch at noon, pants. She is also a member of bringing their own sandwiches with beverages and dessert to be provided by her. After lunch a short movie on the work of the ARC will be shown. Mrs. E. Spurling of the Rockville office at all levels in schools in Man-

CREATIVE CLASSES

Classes in creative crafts are underway at the home of Mrs. W. F. Keller on Rt. 44A, Bolton. Mrs. Keller has invited all neighbors to lunch at noon, pants. She is also a member of bringing their own sandwiches with beverages and dessert to be provided by her. After lunch a short movie on the work of the ARC will be shown. Mrs. E. Spurling of the Rockville office at all levels in schools in Man-

CREATIVE CLASSES

Classes in creative crafts are underway at the home of Mrs. W. F. Keller on Rt. 44A, Bolton. Mrs. Keller has invited all neighbors to lunch at noon, pants. She is also a member of bringing their own sandwiches with beverages and dessert to be provided by her. After lunch a short movie on the work of the ARC will be shown. Mrs. E. Spurling of the Rockville office at all levels in schools in Man-

CREATIVE CLASSES

Classes in creative crafts are underway at the home of Mrs. W. F. Keller on Rt. 44A, Bolton. Mrs. Keller has invited all neighbors to lunch at noon, pants. She is also a member of bringing their own sandwiches with beverages and dessert to be provided by her. After lunch a short movie on the work of the ARC will be shown. Mrs. E. Spurling of the Rockville office at all levels in schools in Man-

CREATIVE CLASSES

Classes in creative crafts are underway at the home of Mrs. W. F. Keller on Rt. 44A, Bolton. Mrs. Keller has invited all neighbors to lunch at noon, pants. She is also a member of bringing their own sandwiches with beverages and dessert to be provided by her. After lunch a short movie on the work of the ARC will be shown. Mrs. E. Spurling of the Rockville office at all levels in schools in Man-

CREATIVE CLASSES

Classes in creative crafts are underway at the home of Mrs. W. F. Keller on Rt. 44A, Bolton. Mrs. Keller has invited all neighbors to lunch at noon, pants. She is also a member of bringing their own sandwiches with beverages and dessert to be provided by her. After lunch a short movie on the work of the ARC will be shown. Mrs. E. Spurling of the Rockville office at all levels in schools in Man-

CREATIVE CLASSES

Classes in creative crafts are underway at the home of Mrs. W. F. Keller on Rt. 44A, Bolton. Mrs. Keller has invited all neighbors to lunch at noon, pants. She is also a member of bringing their own sandwiches with beverages and dessert to be provided by her. After lunch a short movie on the work of the ARC will be shown. Mrs. E. Spurling of the Rockville office at all levels in schools in Man-

CREATIVE CLASSES

Classes in creative crafts are underway at the home of Mrs. W. F. Keller on Rt. 44A, Bolton. Mrs. Keller has invited all neighbors to lunch at noon, pants. She is also a member of bringing their own sandwiches with beverages and dessert to be provided by her. After lunch a short movie on the work of the ARC will be shown. Mrs. E. Spurling of the Rockville office at all levels in schools in Man-

CREATIVE CLASSES

Classes in creative crafts are underway at the home of Mrs. W. F. Keller on Rt. 44A, Bolton. Mrs. Keller has invited all neighbors to lunch at noon, pants. She is also a member of bringing their own sandwiches with beverages and dessert to be provided by her. After lunch a short movie on the work of the ARC will be shown. Mrs. E. Spurling of the Rockville office at all levels in schools in Man-

CREATIVE CLASSES

Classes in creative crafts are underway at the home of Mrs. W. F. Keller on Rt. 44A, Bolton. Mrs. Keller has invited all neighbors to lunch at noon, pants. She is also a member of bringing their own sandwiches with beverages and dessert to be provided by her. After lunch a short movie on the work of the ARC will be shown. Mrs. E. Spurling of the Rockville office at all levels in schools in Man-

CREATIVE CLASSES

Classes in creative crafts are underway at the home of Mrs. W. F. Keller on Rt. 44A, Bolton. Mrs. Keller has invited all neighbors to lunch at noon, pants. She is also a member of bringing their own sandwiches with beverages and dessert to be provided by her. After lunch a short movie on the work of the ARC will be shown. Mrs. E. Spurling of the Rockville office at all levels in schools in Man-

CREATIVE CLASSES

Classes in creative crafts are underway at the home of Mrs. W. F. Keller on Rt. 44A, Bolton. Mrs. Keller has invited all neighbors to lunch at noon, pants. She is also a member of bringing their own sandwiches with beverages and dessert to be provided by her. After lunch a short movie on the work of the ARC will be shown. Mrs. E. Spurling of the Rockville office at all levels in schools in Man-

CREATIVE CLASSES

Classes in creative crafts are underway at the home of Mrs. W. F. Keller on Rt. 44A, Bolton. Mrs. Keller has invited all neighbors to lunch at noon, pants. She is also a member of bringing their own sandwiches with beverages and dessert to be provided by her. After lunch a short movie on the work of the ARC will be shown. Mrs. E. Spurling of the Rockville office at all levels in schools in Man-

CREATIVE CLASSES

Classes in creative crafts are underway at the home of Mrs. W. F. Keller on Rt. 44A, Bolton. Mrs. Keller has invited all neighbors to lunch at noon, pants. She is also a member of bringing their own sandwiches with beverages and dessert to be provided by her. After lunch a short movie on the work of the ARC will be shown. Mrs. E. Spurling of the Rockville office at all levels in schools in Man-

CREATIVE CLASSES

Classes in creative crafts are underway at the home of Mrs. W. F. Keller on Rt. 44A, Bolton. Mrs. Keller has invited all neighbors to lunch at noon, pants. She is also a member of bringing their own sandwiches with beverages and dessert to be provided by her. After lunch a short movie on the work of the ARC will be shown. Mrs. E. Spurling of the Rockville office at all levels in schools in Man-

CREATIVE CLASSES

Classes in creative crafts are underway at the home of Mrs. W. F. Keller on Rt. 44A, Bolton. Mrs. Keller has invited all neighbors to lunch at noon, pants. She is also a member of bringing their own sandwiches with beverages and dessert to be provided by her. After lunch a short movie on the work of the ARC will be shown. Mrs. E. Spurling of the Rockville office at all levels in schools in Man-

CREATIVE CLASSES

Classes in creative crafts are underway at the home of Mrs. W. F. Keller on Rt. 44A, Bolton. Mrs. Keller has invited all neighbors to lunch at noon, pants. She is also a member of bringing their own sandwiches with beverages and dessert to be provided by her. After lunch a short movie on the work of the ARC will be shown. Mrs. E. Spurling of the Rockville office at all levels in schools in Man-

CREATIVE CLASSES

Classes in creative crafts are underway at the home of Mrs. W. F. Keller on Rt. 44A, Bolton. Mrs. Keller has invited all neighbors to lunch at noon, pants. She is also a member of bringing their own sandwiches with beverages and dessert to be provided by her. After lunch a short movie on the work of the ARC will be shown. Mrs. E. Spurling of the Rockville office at all levels in schools in Man-

CREATIVE CLASSES

Classes in creative crafts are underway at the home of Mrs. W. F. Keller on Rt. 44A, Bolton. Mrs. Keller has invited all neighbors to lunch at noon, pants. She is also a member of bringing their own sandwiches with beverages and dessert to be provided by her. After lunch a short movie on the work of the ARC will be shown. Mrs. E. Spurling of the Rockville office at all levels in schools in Man-

This advertisement paid for by Manchester Residents

Copyright © 1966 by The Associated Press

Barry Asks Safety Code For Cycles

State Sen. David M. Barry of Manchester, Democratic candidate for reelection from the 4th Senatorial District, has called for a state safety code for motorcycles and motorcooters and for their operators. He said that, if elected, he will propose to the 1967 session of the State Legislature that it establish regulations concerning the vehicles and the operators.

"Such a code," he said, "would include the requirement that each operator wear protective headgear, that no passengers be permitted on the vehicles, and that every person wanting to drive such a vehicle be tested on his or her familiarity with it and with the ability to operate it."

Noting the recent increase in the number of such vehicles on the highways and the increasing number of accidents involving them, Barry said that, "in the interest of public safety, new regulations are definitely needed."



New Fords Come to Dillon's

This Ford Galaxie 500 is on display with other models at Dillon Sales and Service, 310 Main St. Standard equipment on this and all Fords are a dual braking system with separate brake lines, turn signals that also signal highway lane changes, emergency flashers and safety padding around the windshield area. All Fords come with a 24,000-mile or 24-month warranty whichever Ford dealer will make free replacement, including labor, of any part with defect in workmanship or material.

School Menus

The Manchester public school menu for the week of Oct. 3 is as follows:
Monday: Hamburg patty on roll, potato chips, green beans, milk, cranberry crisp.
Tuesday: Creamed chicken on biscuits, peas, bread, butter, milk, orange-pineapple whip.
Wednesday: Meat balls, creamed corn, carrots, gravy, mashed potato, carrots, asparagus for the price five.

VOTE REPUBLICAN

Republican Candidate FOR

Town Treasurer

Rosalind T. Quish

CAPABLE
INTELLIGENT
AMBITIOUS
CIVIC MINDED
ENERGETIC

OCTOBER THIRD

PAID FOR BY FRIENDS OF THE CANDIDATE

Tolland

Town History Coloring Book Is Proposed for Children

Tolland children will be coloring a historical coloring book of the town's history. The idea of a historical coloring book was suggested at a recent meeting of teachers and representatives of the Tolland Historical Society. The concept was enthusiastically received by both groups. The teachers felt it would be a unique way for the school children to learn places of local history and to get away from the standard history textbook. Other suggestions included maps of the town both old and new showing dirt roads which could be compared, showing children how the town has grown. Places of historical interest could also be pictured on the map with a brief description and its importance to Tolland's history. The map would show how to reach the place of interest.

A collection of photos which could be incorporated into an album and passed around to the children was suggested, as was the taking of slides pictures on class expeditions and incorporating commentaries made by the children on a tape recording which could be played while the slides are being shown. School Superintendent Robert Bixton suggested contact with officials of the University of Connecticut or of Hartford to see if any graduate students would be interested in researching the history of Tolland as their subject for a masters thesis. The thesis could then serve as a basic up-to-date history of the town which could be adopted to suit the needs of teaching or a basic teachers guide.

A committee to investigate the various suggestions presented at the meeting was composed of two teachers and two members of the historical society. Mrs. Miller and Everett Kiegl will represent the teachers and Miss Florrie Blodgett, Mrs. Florence Blodgett, Mrs. Edmund Quatralle, the historical society.

Committee Recommends

Welfare Workers' Firing

HARTFORD (AP)—Three young State Welfare Department workers may lose their jobs because they took part in a Sept. 14 welfare recipients' demonstration against their own department. The Citizens Advisory Committee on Welfare recommended Wednesday that the three be fired. The committee acted after hearing a report from a special panel of administrators appointed by Welfare Commissioner Bernard Shapiro.

The three workers whose jobs are at stake are Miss Marianne Charlet of Middlebury, Stephen Fortunato Jr. of Hartford, and Richard Bourque, also of Hartford. Miss Charlet and 18 other persons were arrested in the demonstration at Shapiro's office. The report, said the three workers were absent from their jobs the afternoon of the protest demonstration, and that Miss Charlet and Fortunato joined in pushing against police lines when some demonstrators tried to force their way into Shapiro's office.

Shapiro must make the final decision in the case. The decision will not be announced until the persons involved have been notified in writing, according to state personnel rules. Shapiro disclosed that before

Tolland

Town History Coloring Book Is Proposed for Children

Tolland children will be coloring a historical coloring book of the town's history. The idea of a historical coloring book was suggested at a recent meeting of teachers and representatives of the Tolland Historical Society. The concept was enthusiastically received by both groups. The teachers felt it would be a unique way for the school children to learn places of local history and to get away from the standard history textbook. Other suggestions included maps of the town both old and new showing dirt roads which could be compared, showing children how the town has grown. Places of historical interest could also be pictured on the map with a brief description and its importance to Tolland's history. The map would show how to reach the place of interest.

A collection of photos which could be incorporated into an album and passed around to the children was suggested, as was the taking of slides pictures on class expeditions and incorporating commentaries made by the children on a tape recording which could be played while the slides are being shown. School Superintendent Robert Bixton suggested contact with officials of the University of Connecticut or of Hartford to see if any graduate students would be interested in researching the history of Tolland as their subject for a masters thesis. The thesis could then serve as a basic up-to-date history of the town which could be adopted to suit the needs of teaching or a basic teachers guide.

A committee to investigate the various suggestions presented at the meeting was composed of two teachers and two members of the historical society. Mrs. Miller and Everett Kiegl will represent the teachers and Miss Florrie Blodgett, Mrs. Florence Blodgett, Mrs. Edmund Quatralle, the historical society.

Committee Recommends

Welfare Workers' Firing

HARTFORD (AP)—Three young State Welfare Department workers may lose their jobs because they took part in a Sept. 14 welfare recipients' demonstration against their own department. The Citizens Advisory Committee on Welfare recommended Wednesday that the three be fired. The committee acted after hearing a report from a special panel of administrators appointed by Welfare Commissioner Bernard Shapiro.

The three workers whose jobs are at stake are Miss Marianne Charlet of Middlebury, Stephen Fortunato Jr. of Hartford, and Richard Bourque, also of Hartford. Miss Charlet and 18 other persons were arrested in the demonstration at Shapiro's office. The report, said the three workers were absent from their jobs the afternoon of the protest demonstration, and that Miss Charlet and Fortunato joined in pushing against police lines when some demonstrators tried to force their way into Shapiro's office.

Shapiro must make the final decision in the case. The decision will not be announced until the persons involved have been notified in writing, according to state personnel rules. Shapiro disclosed that before



Move up to the distinguished motoring of a previously owned Lincoln Continental. We have an unusually choice selection of Continentals recently traded by their previous owners for the 1966 version of America's most distinguished motorcar. Their prime condition (many still carry the new-car warranty) assures their second owners many years and miles of unsurpassed motoring excellence, together with the most impressive savings. We'll be glad to quote you the interestingly low terms—this week!

MORIARTY BROTHERS

301 CENTER STREET — 648-5125
"Connecticut's Oldest Lincoln-Mercury Dealer"
OPEN EVENINGS EXCEPT THURSDAY

COUNTRY DRUG IS HERE!

Sewing Machines (Last year's models) never used. Sacrifice \$35 or \$1 weekly. 646-0242. New England Appliance.

COUNTRY DRUG IS NOW OPEN!

WATCH FOR LUCKY MARKERS at PIZZA KING

SAVE 25%—58% ON GARDEN SUPPLIES AND PAINT SPECIALS!

FIX-UP... CLEAN-UP SALE!

SAVE 3.09

26" LAWN SWEEPER HOLDS 5½ BUSHELS

High quality lawn sweeper with jumbo 5½ bushel capacity! Use it for leaves or grass clippings, makes the job a lot easier! Trigger brush adjustment! Lift-out hopper! Semi-pneumatic wheel folds to a slim 2" for easy storage. Assembles simply.

16.88

Compare at 19.87

SAVE 58%

GRAND WAY INTERIOR OR EXTERIOR PAINT

Choose Grand Way's own Selfcote, easy working house paint that covers and wears extremely well! It may be tinted or intermixed, tints with turpentine. In white only. Or, choose our Selfcote Interior latex flat paint, for 1-coat coverage! Dries in less than an hour! Odorless! Tools clean with soap and water! Decorator colors plus white.

2.49 gallon

Compare at 5.44

9'x12' PLASTIC DROP CLOTH... 9c

18" BAMBOO GARDEN RAKE

84c

Compare at 1.19

Ideal for quick cleanup! Wooden handle, sturdy bamboo tines.

SAVE 35c

50' PLASTIC GARDEN HOSE

1.49

Compare at 1.97

2½" I.D. Full flow brass couplings. Suggested construction. Guaranteed for 1 year.

CUT 25%

FURNITURE ANTIQUING KIT

2.99

Our regular 4.80

Transform old pieces of furniture into fashionable antique replicas. Includes antiquing, staining, waxing, and oiling.

SAVE 1.51

7" ROLLER AND TRAY SET

67c

Our regular 99c

Full size roller set with tray. Quality paint roller. Easy to use.

SAVE 32c

10-4-4 LAWN FOOD

1.77

Compare at 2.49

Time proven formula. 10-4-4 feeds 5,000 square feet. 100% natural organic matter.

SAVE 29%

20" LAWN SPREADER

6.88

Compare at 9.97

Big 40-pound capacity! 10" wheels. Heavy duty. Offset control. Solid construction.

SAVE 3.09

ASSORTED PAINT BRUSHES

49c

Compare at 79c

Choose 1½" or 2" pure bristle variety brush or brush. 2" DuPont brush. 2" DuPont brush.

SAVE 30c

CAULKING CARTRIDGE GUN

64c

Our regular 89c

Heavy duty. Metal gun. Easy to use. Quality caulking cartridges. 2 for 99c.

SAVE 25c

Grand Way

MISSES' BETTER SKIRTS

5.99

Compare at 8.99-11.99

From one of the country's great sportswear manufacturers. 100% virgin wool or 30% Ac hair/wool blend. A-line or soft lined slim sheath styles, hip stitch pleated styles also. Black, navy or blue. 8-12.

MISSES' STRETCH PANTS

3.99

Compare at 5.99

Quality of detail and manufacture. Adagio type stretch with waistband. Regular attached stirrups. Seven fashion colors. Sizes 8 to 18.

MISSES' LINED RAINCOATS

12.90

Compare at \$16

A perfect coat for those cold days, that will protect you from rain and snow! Stylish toggle with, ple and quilt lined. With fashionable, form hugging cuffs. Nylon, rayon, or black. 8-12.

GIANT ROUNDUP OF MEN'S WESTERN STYLE JACKETS

4 authentic western styles to pick from!

10.77

Compare at 19.99

- 100% cotton duck cloth, lined with Sherpa® acrylic pile. Pockets and trim of Sherpa® also. Contrast stitching on yoke and seams. 36-46.
- Laminated corduroy, Sherpa® acrylic lined. Snap front closure. 2 snap patch breast pockets. 36-46.
- Brushed cotton denim. Contrast attached yoke and seams. Sherpa® acrylic lining. Flap patch pockets, vented sides. 36-46.
- 100% wool plaid, richly lined with Sherpa® acrylic pile. Button cuff. 36-46.

MANCHESTER PARKADE, MIDDLE TURNPIKE WEST • OPEN MON. THRU SAT. 9:30 A.M. TO 9 P.M. • "CHARGE IT" AT GRAND-WAY... TAKE MONTHS TO PAY!

29 SEP 29

In Thompsen Murder Threatening Letter Introduced at Trial

LITCHFIELD (AP) — "I Prusselich of the Canaan bar dragged her through the house racks. Thompsen took the stand Wednesday and told what he found when he returned home with an electric cord," said the anonymous letter.

"I used a hammer to pound the spike to hang her. She fell to the ground. The kitchen was splattered the afternoon of the murder. I brushed her head in several times with a large rock." The hand printed letter was introduced as an exhibit Wednesday at the first degree murder trial of 30-year-old Harry A. Solberg of Hartland. He is accused of killing Mrs. Dorothy Thompsen, 30, of Barkhamsted, on June 16, 1966.

Also marked as exhibits at the Superior Court trial as it got under way Wednesday were two bloodstained table forks and a blood-stained carving fork, a piece of planking from the Thompsen's back porch with a nail punch driven into one end, a piece of electric appliance cord, and a pink plastic piggy bank reported missing from the Thompsen home which state police said was found in the woods near Solberg's house.

The letter describing the crime was received by Mrs. Thompsen's husband, Armin, two days after the slaying, according to testimony Wednesday by State Police Lt. Cleveland

Fair Two Days in Buckingham

at Buckingham Congregational Church, Miss Francis Phelps, 5 p.m.

The fair will include demonstrations of early well known in the field of antiques and a writer on the substitutions of weaving, rug hooking, tea room and a country store. An Early American Fair for the Hartford Times, will feature arts and crafts will open the fair tomorrow at 11 and moulding pewter. Many One pound of ground cooked meat measures about two cups.

YES on MONDAY

DOWNTOWN RENEWAL IS THE ONLY QUESTION TO BE VOTED ON NEXT MONDAY

VOTE YES FOR RENEWAL ON MONDAY, OCT. 3

This advertisement paid for by Manchester Residents

SAVE! SAVE! SAVE!

NEW HIGHER DIVIDEND RATE EFFECTIVE OCTOBER 1, 1966

4 1/4%

INSTANT EARNINGS
Dividends paid from day of deposit. No restrictions.

Dividends paid quarterly: At the beginning of January, April, July and October.

OPEN TILL 4 P.M. MONDAY THROUGH FRIDAY THURSDAY NIGHT 8 to 9 O'CLOCK

Manchester SAVINGS AND LOAN ASSOCIATION

1007 MAIN ST. — NEAR MAPLE ST.
BRANCH OFFICE, ROUTE 31, COVENTRY

Grand Way COUPON SALE!

CLIP AND SAVE! PRICES SO LOW WE MUST LIMIT 1 COUPON OF EACH PER CUSTOMER!

<p>LIMIT ONE PER CUSTOMER</p> <p>WITH THIS COUPON</p> <p>G-E, OSTER & PRESTO ELECTRIC CAN OPENERS</p> <p>Your Choice Reg. 13.88 \$9</p>	<p>LIMIT ONE PER CUSTOMER</p> <p>WITH THIS COUPON</p> <p>FAMOUS BRANDS 3-SPEED HAND MIXERS</p> <p>Reg. 8.88 \$5</p> <p>Hamilton Beach, G-E, Ionia!</p>	<p>LIMIT ONE PER CUSTOMER</p> <p>WITH THIS COUPON</p> <p>9'x12' FOAM BACKED RAYON TWEED RUG</p> <p>Reg. 19.99 \$14</p> <p>Your choice of colors!</p>	<p>LIMIT ONE PER CUSTOMER</p> <p>WITH THIS COUPON</p> <p>WOMEN'S ASSORTED FULLY LINED RAINCOATS</p> <p>Reg. 10.99 \$7</p> <p>Variety of colors! 8-18.</p>
<p>LIMIT ONE PER CUSTOMER</p> <p>WITH THIS COUPON</p> <p>G-E OR PROCTOR 10-CUP COFFEE MAKERS</p> <p>Reg. 14.97 Fully automatic! 7.77</p>	<p>LIMIT ONE PER CUSTOMER</p> <p>WITH THIS COUPON</p> <p>G-E, SUNBEAM & PROCTOR STEAM & DRY IRONS</p> <p>Your Choice Reg. 10.88 \$7</p>	<p>LIMIT ONE PER CUSTOMER</p> <p>WITH THIS COUPON</p> <p>PROPORTIONED LENGTHS SERVICE SHEER NYLONS</p> <p>Reg. 89c pr. 2 pair \$1</p> <p>Beige, Taupe, White, 8 1/2-11. 2-pr. limit!</p>	<p>LIMIT ONE PER CUSTOMER</p> <p>WITH THIS COUPON</p> <p>MEN'S LIGHTWEIGHT ZIP-UP JACKETS</p> <p>Reg. 12.99 \$7</p> <p>Golf styles! Sizes 36-44.</p>
<p>LIMIT ONE PER CUSTOMER</p> <p>WITH THIS COUPON</p> <p>5-STRING, WOOD BEGINNERS GUITAR</p> <p>Reg. 14.98 \$9</p>	<p>LIMIT ONE PER CUSTOMER</p> <p>WITH THIS COUPON</p> <p>G-E 5-TUBE TABLE RADIO</p> <p>Reg. 8.88 7.77</p>	<p>LIMIT ONE PER CUSTOMER</p> <p>WITH THIS COUPON</p> <p>WOMEN'S ORLON® ACRYLIC CARDIGANS</p> <p>Reg. 3.99 \$3</p> <p>Classic style! Sizes 34-40</p>	<p>LIMIT ONE PER CUSTOMER</p> <p>WITH THIS COUPON</p> <p>MEN'S SHORT SLEEVE WHITE DRESS SHIRTS</p> <p>Reg. 1.99 \$1</p> <p>8 Collar styles! 14-17. Limit 2.</p>
<p>LIMIT ONE PER CUSTOMER</p> <p>WITH THIS COUPON</p> <p>G-E OR SUNBEAM 4-HEAT CONTROL HAIR DRYERS</p> <p>Reg. 14.97 \$9</p> <p>With bouffant hood!</p>	<p>LIMIT ONE PER CUSTOMER</p> <p>WITH THIS COUPON</p> <p>RALEIGH 15-TRANSISTOR RADIO</p> <p>\$5</p> <p>With battery, case and earphone!</p>	<p>LIMIT ONE PER CUSTOMER</p> <p>WITH THIS COUPON</p> <p>MISSES' CORDUROY & BRIGDED DENIM HIPSTER JEANS</p> <p>Reg. 3.99 \$3</p> <p>Nice assortment of colors! 8-18.</p>	<p>LIMIT ONE PER CUSTOMER</p> <p>WITH THIS COUPON</p> <p>BOYS' WASHABLE CORDUROY PANTS</p> <p>Reg. 2.49 pr. 2 pair \$3</p> <p>All sizes! Limit 2 per customer.</p>
<p>LIMIT ONE PER CUSTOMER</p> <p>WITH THIS COUPON</p> <p>LADY VANITY ELECTRIC KNIFE</p> <p>Reg. 9.98 6.88</p> <p>Stainless Steel blades!</p>	<p>LIMIT ONE PER CUSTOMER</p> <p>WITH THIS COUPON</p> <p>FAMOUS MAKE DUAL CONTROL ELECTRIC BLANKETS</p> <p>Reg. 16.99 \$10</p> <p>Double and twin sizes!</p>	<p>LIMIT ONE PER CUSTOMER</p> <p>WITH THIS COUPON</p> <p>MISSES' ELASTIC & BAND LEG RAYON PANTIES</p> <p>Reg. 39c ea. 4 for \$1</p> <p>Sizes 5-7. Limit 4 per customer.</p>	<p>LIMIT ONE PER CUSTOMER</p> <p>WITH THIS COUPON</p> <p>DEEP-TOOTH ELECTRIC HEDGE TRIMMER</p> <p>Reg. 18.88 \$12</p> <p>Underwriter approved!</p>

MANCHESTER PARKADE, MIDDLE TURNPIKE WEST • OPEN MON. THRU SAT. 9:30 A.M. TO 9 P.M. • "CHARGE IT" AT GRAND-WAY... TAKE MONTHS TO PAY!

CALDOR

DISCOUNTS THE PRICE, NEVER THE QUALITY!

Girls' 14.98 to 17.98 Pile Lined Suburban Coats

SIZES 4 to 6X **11⁹⁷**

Sizes 7 to 14 13.97

Versatile all around full length coats, for dress, school and stormy weather. Sketched are only two from our group of corduroy checks, tackle twills and vinyl suedes. Hooded fur collar styles.

Misses 50.00 Genuine Suede Jackets **36⁹⁷**

Season's highlight fashions in suede, with slip-out lining for warmth. Leather trim, classic styles. Pleated the leather trim. Antelope brown. Sizes 10 to 18.

Boys' 15.95 Navy Pea Jackets **11⁹⁷**

Season's most wanted style with warm cotton acrylic back. 100% cotton pile linings, epaulet shoulders, anchor buttons. Sizes 8 to 18.

Imported 7.98 Italian Leather Gloves **5³⁷**

Four button lengths. Soft leather gloves with silky like leather lining. Six button length. \$17

Teens & Ladies 5.95 Chukka Boots **3⁹⁹**

Genuine plantation crepe soles. This campus favorite in natural suede. Sizes 5 to 10.

Men's 59.50 Genuine Suede Jackets **44⁹⁷**

Suburban styles from a top rung domestic maker. Impeccably tailored of #1 select suede leather skins. 32" ranch model with Sherpa® lining & collar. 32" suburban with slip-out pile liner. Antelope & pomona brown. Sizes 38 to 46.

Men's 5.00 Exciting Sport Shirts **3⁴⁷**

Turtleneck & Penderosa sport shirts. Exceptional group includes new poor boy rib-knit, turtles, rayon challis sport shirts with turtle hems & cotton flannel penderosas with Sherpa® collars, all of fine quality. Sizes S-M-L-XL.

Boys' 5.98 Long Sleeve Velour Shirts **2⁹⁹**

Zipper turtle neck, washable. Loden gold, burgundy, blue. Sizes S-8-10, M-12-14, L-16-18

Men's 8.95 Shag Suede Casuals **6⁹⁷**

Soft contour of unlined suede with crepe soles. Matching grain collar. Loden green & whiskey brown. Sizes 8 1/2 to 12.

Girls' 4.98 to 7.98 Dress Specials **\$3 & \$4**

Perky pretty dresses at a fabulous savings! Choose from mod, flaire, country and regular waistlines. Prints, plaids and solid colors. Sizes 3 to 6X & 7 to 14.

Young Men's 8.98 Slacks **5⁹⁷**

Mod Hopson, Perma Press pants. Pulls on. Quality make. Sizes 30 to 36.

Men's 2.95 Heavyweight Sweatshirts **1⁷⁷**

Top quality, winterweight fleece lined crewnecks, full length sleeves. All colors. S-M-L-XL.

<p>Airlite Urethan Bed Pillows 2¹⁷ ea.</p> <p>Striped, plaided, tick high crown; full size; cord welted.</p>	<p>Wool Textured Fiberglass Drapes</p> <p>54" ... 4.87 72" ... 5.97 63" ... 5.47 84" ... 6.47 63" Double Width 10.97 63" Triple Width 16.97</p> <p>Solid color fiberglass drapes. No iron, drip dry in 7 minutes. Non-allergic, acid textured wool glass. Custom tailored by a famous 8th Ave. manufacturer. Beige, white, green, blue, gold.</p>	<p>Convertible Cape Cod Curtains</p> <p>24" ... 1.59 45" ... 2.29 30" ... 1.69 54" ... 2.69 36" ... 1.79 63" ... 2.89</p> <p>Valance to match89</p> <p>Convertible curtains with all-around ruffled trim. Can be used for almost every window in the house. Use as cafe, tie back, cologne curtain, or for double or triple windows. In Springmaid's broadcloth white, pink, green, yellow and beige.</p>	<p>Two-in-one Thermal Weave Blanket-Bedspread</p> <p>Our Reg. 6⁴⁷</p> <p>Bedspread by day, a blanket by night. Bang and warm with an extra cover, wonderfully cool when used alone. Lovely woven diamond pattern of soft cotton yarns, and richly fringed.</p>
--	---	---	--

Caldor MANCHESTER — 1145 TOLLAND TURNPIKE EXIT 93, WILBUR CROSS PARKWAY

Sale Thurs. thru Sat.
Mon. Thru Weds. 9:30 A.M. to 9:30 P.M.
Thurs. Thru Fri. 9:30 A.M. to 10 P.M.
Saturday 9:00 A.M. to 10 P.M.

29 SEP 29

29 SEP 29

Manchester Evening Herald

Published Every Evening Except Sundays... Subscription Rates... Classified Advertising...

The only thing that has a patent on it is what it costs the taxpayers to accomplish these things for themselves. And every time the town has to hire the money to do such things, because the political administration running the town doesn't want to pay for them, the final cost of each improvement totals half as much again.

With this regime, as its own spokesmen have admitted in advance of the actual date of a town revaluation and the higher assessments expected to result from it becomes merely another way of spending more money without raising the actual figures of the tax rate. But when assessments go up, even if the tax rate figure remains stable, the real tax rate goes up. Especially it goes up for the average home owner, who doesn't know how to protect and fight his case.

Everything But Paying

Political responsibility is something the party now in majority control of Manchester's boards and commissions acknowledges only to its own machine, and to its own behind the scenes network of privilege and influence for special people and special interests.

Open Forum

'Status of Women' Rosalind Quish nominee for Town Treasurer is a highly intelligent, capable business woman and devoted housewife. Having been nominated by the Republican Party, she becomes the symbol of the Republican Party's recognition of the important status of women on the Government of Manchester.

Connecticut Yankee

These are only a few of the questions which you had better consider pretty carefully before you vote for any such Downward Renewal Plan on Oct. 3. Thousands of people in other cities where Urban Renewal has occurred have been bitterly disappointed and let down over the loss of their little homes and the serious problems that have arisen in the relocation and re-settlement.

Wanted

Wanted: A Home For Our Carpets Colonial Rug & Tile VERNON CIRCLE-875-0953-649-6577 Carpets, Linoleum, Ceramic Tile, Floor Tile FINANCED FOR YOUR CONVENIENCE



"DRYING SHED": Caprilands Herb Farm, Coventry

Open Forum

'Status of Women' Rosalind Quish nominee for Town Treasurer is a highly intelligent, capable business woman and devoted housewife. Having been nominated by the Republican Party, she becomes the symbol of the Republican Party's recognition of the important status of women on the Government of Manchester.

Connecticut Yankee

These are only a few of the questions which you had better consider pretty carefully before you vote for any such Downward Renewal Plan on Oct. 3. Thousands of people in other cities where Urban Renewal has occurred have been bitterly disappointed and let down over the loss of their little homes and the serious problems that have arisen in the relocation and re-settlement.

Wanted

Wanted: A Home For Our Carpets Colonial Rug & Tile VERNON CIRCLE-875-0953-649-6577 Carpets, Linoleum, Ceramic Tile, Floor Tile FINANCED FOR YOUR CONVENIENCE

Advertisement for 'ERHARD'S PROBLEMS' and 'JOHNSON'S PROBLEMS' featuring a cartoon illustration of a man in a suit and a woman in a dress, with text describing their financial and personal issues.

Experiment in LA 'Keep Them Well' Plan May Cut Medical Care

LOS ANGELES (AP) — The Los Angeles Food Employees Council is about to gamble \$500,000 a year that a new "keep them well" program will cut the rising cost of medical care it provides for 22,000 union workers.

Cleaning Main Reseal Tonight

Due to the malfunction of the cleaning apparatus, the 16-inch Main St. water main was not cleaned last night, as expected, and the operation will be repeated tonight.

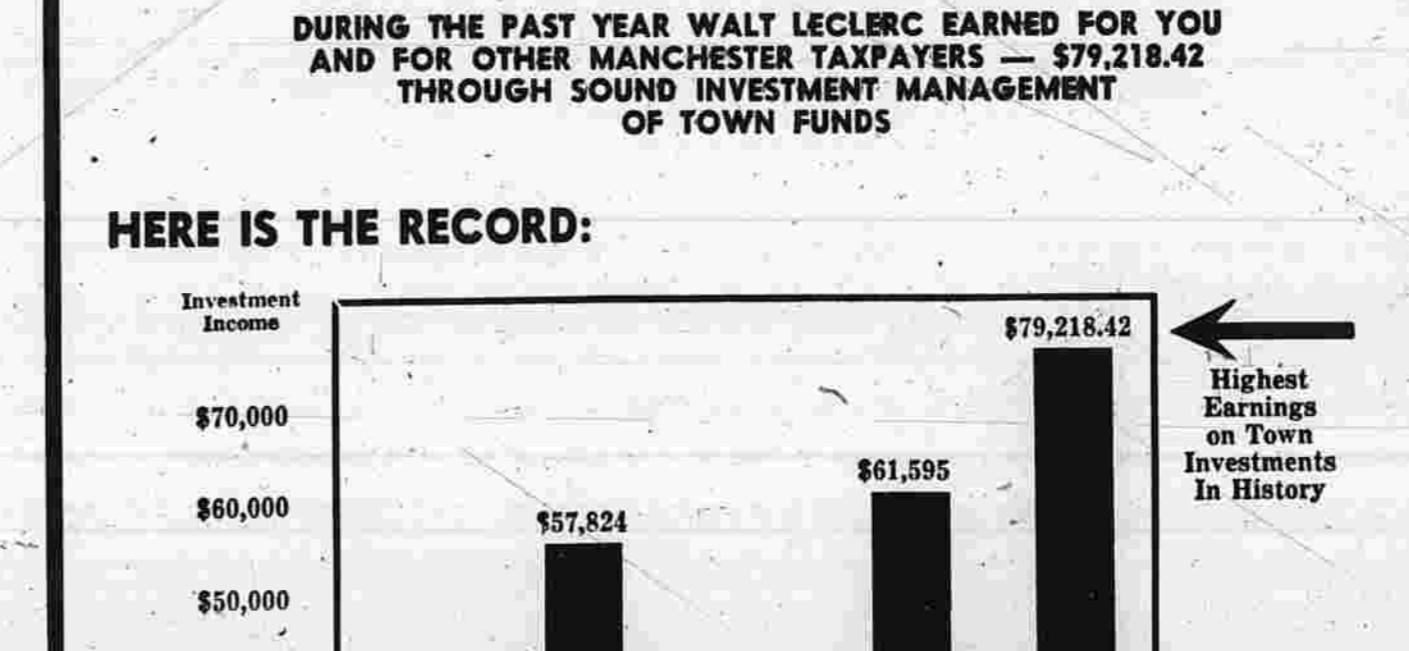
Boys May Register for Draft Here Instead of in Vernon

All boys who are eligible for the draft may now sign up at Bolton Junior-Senior High School rather than in Rockville Building, with continuous swap baby-sitting should call Mrs. Wilcox.

Advertisement for Grossman's Lumber, Building Materials, Plumbing, and more. Features the slogan 'GROSSMAN'S' and 'PINE & CENTER STS., MANCHESTER'.

Advertisement for Walter N. Leclerc, Town Treasurer, 1958-60, 1962. Includes the slogan 'DO YOU KNOW THAT THIS MAN IS WORKING FOR YOU? He's Doing Very Well!'.

Advertisement for Democrat candidate for re-election as Treasurer, Walter N. Leclerc. Includes the slogan 'Economic in Promises—Generous in Performance'.



Advertisement for 'Say Yes To Progress VOTE DEMOCRATIC' for the Town Election on Monday, October 3rd. Includes a list of achievements for Walter N. Leclerc.

Advertisement for Grossman's Lumber, Building Materials, Plumbing, and more. Features the slogan 'GROSSMAN'S' and 'PINE & CENTER STS., MANCHESTER'.

Advertisement for 'OUTSTANDING cash'n carry values!' featuring 16 foot aluminum E-X-T-E-N-S-I-O-N push-up ladders. Includes a price list for various ladder sizes.

Advertisement for Royalcote Masonite 4x4 panels. Features the slogan 'Easy-To-Install CEDAR CLOSET LINING 22¢' and 'Handsome WOOD COMB DOOR 15.95'.

Advertisement for Webster Baseboard Heat. Features the slogan 'FIR SANDED PLYWOOD 2.48' and 'Webster BASEBOARD HEAT 1.25'.

The Baby Has Been Named...

Adams, Edward Charles, son of Charles R. and Catherine Dermody Adams, 65 Ansel Rd. He was born Sept. 10 at St. Francis Hospital. His maternal grandmother is Mrs. Charles J. Dermody, Seabrook, Mass. His paternal grandparents are Mr. and Mrs. Russell C. Adams, Riverside, R.I. He has a brother James, 9; and two sisters Maureen, 10, and Suzanne, 6.

Dube, John Stephen, son of Raymond C. and Helen Diakun Dube, 114 Belmont St. He was born Sept. 12 at Hartford Hospital. His maternal grandmother is Mrs. Anna Diakun, West Hartford. His paternal grandparents are Mr. and Mrs. D. J. Dube, Hartford. He has three brothers, Raymond, 14, Clifford, 11, and Robert, 8.

Brown, Gary William, son of Gary Percy and Cynthia Gess Brown, 31 Colway St. He was born Sept. 19 at Manchester Memorial Hospital. His maternal grandparents are Mr. and Mrs. William H. Gess, 26 Little St. His paternal grandparents are Mrs. Winnie Brown, New Britain. His maternal great-grandmother is Mrs. Bertha Gess, 19 Lakeside Dr., Andover. His paternal great-grandmother is Mrs. Della Brown, Hyde Park, Mass. He has a sister, Sandra Lee, 2 1/2.

Hajjar, Craig Michael, son of Edl A. and JoAnn Howard Hajjar, 15 Summit Rd., Vernon. He was born Sept. 19 at Manchester Memorial Hospital. His maternal grandparents are Mr. and Mrs. Joseph M. Howard, Danbury. His paternal grandparents are Mr. and Mrs. Abdelnoor Hajjar, Danbury. He has a brother, Jeffrey Joseph, 2 1/2.

DeVaux, Brian Michael, son of Robert E. and Patricia Odell DeVaux, 12 Main St. He was born Sept. 19 at Manchester Memorial Hospital. His maternal grandparents are Mr. and Mrs. Lemuel Odell, 14 Main St. His paternal grandparents are Mr. and Mrs. Albert DeVaux, 801 Main St. He has four brothers, Robert E. Jr., 4, Ronald, 6, Michael, 4, and Jerry, 2.

McKinney, Michelle Dawn, daughter of Glenn Randolph and Hermene Carrara McKinney, 82 Fairfield St. She was born Sept. 19 at Manchester Memorial Hospital. Her maternal grandparents are Mrs. Louie D. Carrara, 44 Prospect St. and James V. Carrara, New Britain. Her paternal grandparents are Mr. and Mrs. Robert J. McKinney, Bolton Center Rd., Bolton. Her maternal great-grandmother is Mrs. Edith J. Welch, 44 Prospect St.

Romanchuck, Lisa Marie, daughter of Richard A. and Stephanie Kosak Romanchuck, 134 Union St. She was born Sept. 22 at Manchester Memorial Hospital. Her maternal grandparents are Mr. and Mrs. Frank J. Kosak, 134 Union St. Her paternal grandparents are Mr. and Mrs. Alexander Romanchuck, 701 Hebron Ave., Glastonbury.

Nicol, Wendy Lynne, daughter of Wayne S. and Jeanne Ravanello Nicol, 40 Griswold St. She was born Sept. 23 at Manchester Memorial Hospital. Her maternal grandparents are Mr. and Mrs. Ovilla Ravanello, Monasp. Her paternal grandparents are Mr. and Mrs. Arthur Nicol, North Stonington.

Brandish, Ted-Ann, daughter of Albert R. and Charlotte Fuller Brandish, 14 Cross St. She was born Sept. 23 at Manchester Memorial Hospital. Her maternal grandparents are Mr. and Mrs. William Warner, East Hartford. Her paternal grandmother is Mrs. Esther Chaney, Oneta, Pa. She has two brothers, Albert, 15, and Robert, 7; and a sister, Diane, 17.

Morsey, William Clarence, son of David W. and Terry Clark Morsey, 89 Lockwood St. He was born Sept. 22 at Manchester Memorial Hospital. His maternal grandparents are Mr. and Mrs. Joseph Morsey, 91 Spruce St. He has a brother, David Wayne, 2; and a sister, Kathleen Alice, 3.

UN Council To Discuss Thant Role

(Continued from Page One)

The appeals have come almost daily, in one form or another, since the assembly started its 21st annual session Sept. 20. The assembly's trusteeship committee recommended Wednesday night that the assembly warn South Africa not to encroach on the territorial integrity or sovereignty of three neighboring British-protected territories — Basutoland, Bechuanaland and Swaziland. The vote was 82 (South Africa and Portugal) and 15 abstaining. Bechuanaland becomes independent Friday. Basutoland Tuesday and Swaziland later.

Bernard Gimbel Dies, Ruled Store Empire

(Continued from Page One)

growing company in 1927 and chairman of the board in 1953. He retired in 1961. Sales amount to more than \$600 million annually. There are 26 Gimbel's stores and suburban branches in New York, Philadelphia, Pittsburgh and Milwaukee, among other places; and 27 branches of New York's Saks Fifth Avenue in Chicago, Detroit, Beverly Hills, San Francisco, Miami Beach, New Haven and elsewhere.

WATCH FOR LUCKY MARKERS at PIZZA KING

He was operated on a year and a half ago for cancer of the spine. He died in his apartment at the Hotel Pierre. He also had a 200-acre estate in Greenwich, Conn., which he considered his home, and a summer place in Palm Beach, Fla. A service will be held at Temple Emmanuel at a time to be announced. The body is at the Campbell Funeral Home.

Viet Casualties High Worst Week Yet For U.S. Troops

(Continued from Page One)

60 other prisoners were dragged away by the fleeing Viet Cong guards. The prisoners left behind were half starved, but the Americans found more than a ton of rice in the camp. Soldiers of the Korean Trier Division sweeping Phu Cat Mountain discovered a Viet Cong prisoner camp whose inmates was a ragged old man too weak to walk. He said the Communists had evacuated about 80 prisoners seven days earlier but he was too feeble to go with them. They left him behind with two days' supply of rice.

Stocks in Brief Maddox Scores Upset In Georgia Primary

(Continued from Page One)

1968 and serve as titular party chief, regardless of the November outcome. In two congressional races, Rep. G. Elliott Hagan won re-election over State Sen. Frank O. Downing and State Rep. Jack Brinkley apparently defeated Eric Cooke Jr. for the nomination in Callaway's district. Both will have Republican opposition in November.

From Your Neighbor's Kitchen

By DOBIS BELDING "Noodie Pudding," Mrs. Irwin (Lila Bart) Kove of 202 Henry St., says, "is a versatile dish as it can be served as a complete dairy luncheon dish with fruit or with meat or poultry in place of potatoes. Noodie Pudding (Dairy) 1 pound medium wide egg noodles 1/2 pound cottage cheese 1/2 pint sour cream 2 eggs, very well beaten 1/4 cup milk 1/2 cup of sugar depending on taste pinch salt 1/4 cup raisins (more if desired) cinnamon to taste conflake crumbs Cook noodles as directed on package, drain well and add other ingredients. Place in well buttered pan about 12 1/2 x 8 1/2 x 2 1/2. Sprinkle conflake crumbs, also add cinnamon and sugar if desired, over top of pudding. Bake in 400-degree oven for about one hour or until top is golden brown. This Mrs. Kove said, may be served with stewed blueberries, strawberries, or sour cream as a complete luncheon dish. Noodie Pudding (meat substitute) 1 pound medium wide noodles 1/4 cup raisins (more if desired) 5 or 6 grated apples 2 eggs, well beaten 1 small can crushed pineapple 1/2 cup sugar, more if desired 1/2 cup milk 1/2 cup cinnamon to taste 1/2 cup sugar, more if desired 1/2 cup milk 1/2 cup cinnamon to taste lemon juice to taste Cook noodles, drain well and add all ingredients. Place in well buttered baking dish and Grade 3 puppi at filling Junior High School; and Maura, a cutting biscuit with it. For well-aged baking dish and Grade 3 puppi at Bowers School, prettier biscuits, lift the cutter half to the bombing of North Illinois Central and U.S. Steel. hour or until top is golden brown. Mrs. Kove and her husband, High School recently. She is a member of Temple them from Lipping over.

Masons to Visit Home, Bay State

Saturday is Grand Master Day at the Masonic Home and Hospital in Waltham, and officers and members of both Manchester and Friendship Lodges of Masons will be in attendance. Grand Master William M. Wyman of Norwich will be honored by the state's Masons in activities from 11 a.m. to 3 p.m., which includes guided tours of the hospital. In the evening, Friendship Lodge of Masons will pay a visit to Hampton Lodge of Masons in Springfield, Mass., to portray the Hiram Legend, the third degree of Masonry. A bus will leave from the Masonic Temple at 4:45 carrying about 50 to Springfield in time for dinner before the ritual work. Worshipful Master John L. Von Deck Jr. will preside.

MISAC Decides Housing Tonight

Manchester church representatives will meet tonight at 8 in the Center Congregational Church to determine whether their churches want to form a non-profit corporation to sponsor moderate-income housing in the North End Renewal Area. The meeting is sponsored by the Manchester Interfaith Social Action Council (MISAC). The cost of the proposed housing would be financed by federal funds under a 40-year, low-interest mortgage. If a corporation is formed, it would require approval from the Manchester Redevelopment Agency (MRA) and the town Board of Directors before land could be made available and construction permitted. Atty. Arnold H. Klau originated the idea to build the housing. The 8th District board of directors went on record recently as opponents of Klau's proposal. The board favors housing for the elderly in the North End.

STAN'S TV Service and Sales

OPEN NOW AT 1078 MAIN ST. PHONE 649-9278 To save money bring in your portable TV's and radios and save money. We use Philco tubes.

FERRANDO ORCHARDS

Native Tree-Ripened Peaches J. H. Hale Variety These are excellent for freezing and canning. Also—McINTOSH APPLES and FARM FRESH APPLE CIDER Birch Mountain Rd., off Hebron Ave (Rt. 91) GLASTONBURY, CONN.

P.A.C. BINGO EVERY MONDAY-3 P.M. P. A. C. BALLROOM 26 VILLAGE STREET, ROCKVILLE

THIS IS FOR YOU.. DOWNTOWN RENEWAL WILL GIVE YOU A BETTER TOWN TO LIVE IN. IT ALSO PAYS FOR ITSELF VOTE YES FOR RENEWAL ON OCT. 3

VISIT THE MANCHESTER SHOE BOX 57 EAST CENTER ST. FINE WOMEN'S SHOES

Sears 4 Days Only... Save \$49.97 on Our Finest Craftsman 10-in. Radial Arm Saw with Metal Stand and Drawer \$199

CHICKEN KING HOME OF HEAVENLY FRIED CHICKEN 419 MAIN STREET—BELOW THE POST OFFICE NEXT TO PIZZA KING AND GRINDER KING Repeat Of A Sellout FRIDAY ONLY HEAVENLY FRIED CLAMS Regularly \$1.25 99c PINT YOU BE THE CATERER — CALL AHEAD 646-0176

THE MEADOWS NURSING HOME "And extended care facility" 24-Hour intensive care by skilled gradua, registered nurses. Therapeutic diets and balanced meals. Complete physical and occupational therapy departments. Post-operative, elderly, convalescent and retired persons. Reservations now being accepted. LOUIS A. DeCAPUA, Administrator Tel. 643-1174 333 BIDWELL STREET MANCHESTER, CONN. (OFF HARTFORD ROAD, AT SILVER LANE)

Ride Ford's New Wave for '67! At your dealer's Friday! 1967 Ford LTD 2-Door Hardtop—one of the world's quietest luxury cars. 1967 Ford XL 2-Door Hardtop—the ultimate in sports/luxury cars. 1967 Fairlane 500 Hardtop—the car that gets sportier and more popular every year. 18 Fords: The strongest, quietest, best built Fords in history. Choose from luxury new LTD's, sporty XL's, stylish Galaxies, Customs and wagons. 13 Fairlanes: Big-car roominess and performance in a lean middleweight. You can pick from exciting XL's and GT's, convertibles, smart sedans and wagons. 10 Falcons: Low price and big economy combined with new luxury. Some people even call them about Timonians. Choose from classy Sports and Club Coupe, sedans and wagons. Better Ideas from Ford for '67... SelectShift Cruise-O-Matic transmission that shifts automatically and manually... automatic door locking... Comfort-Stream ventilation that lets you close windows, yet be refreshed by a silent flow of air... adjustable Tilt-Away Steering Wheel... automatic speed control for foot-free turnpike cruising... Magic Dooropen on wheels that swings out for people and dogs for cargo. And for '67, Ford Motor Company LifeGuard-Design safety features are standard on all models. Ride Ford's new wave for '67! You're ahead in history with a FORD MUSTANG • FALCON • FAIRLANE FORD • THUNDERBIRD DILLON SALES and SERVICE, Inc. 319 MAIN STREET—MANCHESTER, CONN.

Choicest Meats In Town U.S. Choice Bottom Round ROAST 79c lb Top Round Roast lb. 89c STEAKS Boneless Top Round Lb. 99c OCEAN FRESH LIVE MAINE LOBSTERS 99c lb "COLUMBIA GEM" SEMI-BONELESS and FULLY COOKED HAMS Lb. 79c FANCY "SWEET LIFE" BACON Lb. 85c LEAN, FLAVORFUL Ground Chuck Lb. 69c HIGHLAND PARK MARKET is having its B-I-G Dollar Days DOLE PINEAPPLE JUICE 4 1/2 oz. cans \$1.00 GREEN GIANT PEAS 5 303 cans \$1.00 HUNT'S PIZZA CATSUP 10 14 oz. btl. \$1.00 SWEET LIFE CREAM CORN 5 303 cans \$1.00 PROGRESSO ITALIAN TOMATOES 3 No. 3 cans \$1.00 GREEN GIANT NIBLETS 5 12 oz. cans \$1.00 JIFFY CAKE MIXES 9 9 oz. pkgs. \$1.00 B&M BEANS, KIDNEY, PEA, YELLOW EYE 4 28 oz. cans \$1.00 DEL MONTE CLING PEACHES Halves or Slices 4 2 1/2 cans \$1.00 CUT-RITE WAX PAPER 4 125 ft. \$1.00 CAMPBELL'S TOMATO SOUP 9 cans \$1.00 KLEENEX TABLE NAPKINS 4 50 ct. pkgs \$1.00 SWEET LIFE EVAPORATED MILK 7 14 oz. cans \$1.00 SWEET LIFE SMALL SIFTED PEAS 4 303 cans \$1.00 KEN-L RATION DOG FOOD 6 1 lb. cans \$1.00 B&M APPLESAUCE 4 17 oz. jars \$1.00 NEW BOWLENS, Keeps Toilets Clean 4 21 oz. cans \$1.00 * CHOICE—SELECTED—PRODUCE * U. S. NO. 1 POTATOES 30 Lb. Bag 79c SWEET ITALIAN PRUNE PLUMS 2 lbs. 39c RED, SWEET TOKAY GRAPES 2 lbs. 29c Cheney Farms Fancy McIntOSH APPLES 3 lbs. 49c NABISCO PREMIUM CRACKERS Lb. pkg. 56c HIGHLAND PARK MARKET 317 Highland St., Manchester, Conn. Phone 643-4278

Senate Rebuffs Johnson In Anti-Inflation Test

WASHINGTON (AP) — In the Senate, Sen. Everett R. Dirksen called an anti-inflation test, the Senate has rebuffed President Johnson's plan to hold a referendum on budgetary levels.

By a 60-39 vote the Senate Wednesday rejected a House bill for the Labor and Health, Education and Welfare Department.

Before the vote, Dirksen forced a test of whether the Senate was willing to cut the measure \$300 million — the same amount its appropriations committee had added to budget requests.

He lost by a 60-39 vote the Republican leader said "shows who stands where on cutting spending to cope with inflation."

Of the 39 Republicans who voted, seven opposed Dirksen's move.

Dirksen told reporters that "Johnson sits me up" at a recent White House meeting about Congress' action in voting more funds than he had requested.

"I told him I would show him who is for reducing spending and who is not," Dirksen said.

FAT OVERWEIGHT

Available to you without a doctor's prescription, our product called Galaxon. You must lose ugly fat or your money back. Galaxon is a tablet and easily swallowed. Get rid of excess fat and live longer. Galaxon costs \$10.00 and is sold through your favorite drug store. This guarantee: If not satisfied for any reason, just return the package to your druggist and get your full money back. No questions asked. Galaxon is available through Quinn's Pharmacy, 873 Main. Mail Order Form Filed.



Army Recruiting Cites AN Club

The U.S. Army Recruiting Service has cited the Army and Navy Club for its many years of contributing to the success of recruiting in the Manchester area. The club has served as the recruiting station in this area. Receiving the citation is James (Dutch) Fugarty, AN Club president. Making the presentation is Maj. William L. Laley, second right, executive officer of the main recruiting station in Boston. On the left is S. Sgt. Clarence H. Dube, area recruiter, and first right is Sgt. J. C. Charles J. Greenfield, commander of the Hartford Recruiting Station. (Herald photo by Fritz)

TV-Radio Tonight

Television		Radio	
5:00 (3-24) Movie	5:30 News, 5:45	5:00 News, 5:15	5:00 News, 5:15
5:30 (3-24) Movie	6:00 News, 6:15	6:00 News, 6:15	6:00 News, 6:15
6:00 (3-24) Movie	6:30 News, 6:45	6:30 News, 6:45	6:30 News, 6:45
6:30 (3-24) Movie	7:00 News, 7:15	7:00 News, 7:15	7:00 News, 7:15
7:00 (3-24) Movie	7:30 News, 7:45	7:30 News, 7:45	7:30 News, 7:45
7:30 (3-24) Movie	8:00 News, 8:15	8:00 News, 8:15	8:00 News, 8:15
8:00 (3-24) Movie	8:30 News, 8:45	8:30 News, 8:45	8:30 News, 8:45
8:30 (3-24) Movie	9:00 News, 9:15	9:00 News, 9:15	9:00 News, 9:15
9:00 (3-24) Movie	9:30 News, 9:45	9:30 News, 9:45	9:30 News, 9:45
9:30 (3-24) Movie	10:00 News, 10:15	10:00 News, 10:15	10:00 News, 10:15
10:00 (3-24) Movie	10:30 News, 10:45	10:30 News, 10:45	10:30 News, 10:45
10:30 (3-24) Movie	11:00 News, 11:15	11:00 News, 11:15	11:00 News, 11:15
11:00 (3-24) Movie	11:30 News, 11:45	11:30 News, 11:45	11:30 News, 11:45
11:30 (3-24) Movie	12:00 News, 12:15	12:00 News, 12:15	12:00 News, 12:15

KLH STEREO MUSIC SYSTEMS

STOP IN FOR AN EAR FILLING DEMONSTRATION

443 HARTFORD RD. MANCHESTER

CHALK TALK

THE FEEL HAS TWO SEPARATE HEARTS ONE BEATS 60 THE OTHER 160 TIMES A MINUTE.

QUINN'S

ONE WAY TO GOOD HEALTH, CHECK WITH YOUR DOCTOR. THE OTHER, WITH US FOR UP-TO-THE-MINUTE PRESCRIPTION SERVICE! FREE DELIVERY BY OUR MEDICINE DROPPER. PHONE 643-4136.

Hutchinson Charges Deceit In GOP Stand on Bonding

Town Director John J. Hutchinson, Democratic candidate for election, has accused GOP town Chairman Francis Della Croce of "out and out dishonesty" in creating a referendum on bonding.

In an open letter to Della Croce, Hutchinson accused Republicans of "putting up smoke screens" and has called on them to do it. The decision was not made in one meeting, but after many meetings held by those concerned such as the heads of public works, water and sewer, board of education, etc.

"You have claimed and Garcia has stated that the Democratic side has asked that the electorate a fair chance to vote on school repairs. You have claimed that we have 'voted' an item of capital improvement in some petting area for I to effect. This points out your own sura in time he will learn about our town on his own and then no longer need to echo others."

"Manchester's voters are not naive and I know they expect full facts and details on all charges from all sources at an election time. I had intended not to get involved in needless rhetoric this time, but your creation of an 'issue' out of a referendum in November smacks of out and out dishonesty with the electorate. With all the many issues and items of public concern that we could intelligently offer to discuss for the voters. It is apparent that you are either ill-informed in these vital matters, or so blinded by a desire to win the majority control that anything just happens as long as it is an issue to take a popular item like repairs to older schools happens and that time was spent play on the sympathy of the voters just to hope you can gain administration. They should be able to decide on bonding for their town or not."

Three to Attend Florida Parley

Three Manchester women will leave Sunday for Miami Beach, Fla., to attend a national convention of the Council of Catholic Women Wednesday, Oct. 5, ceasing a fugitive.

The FBI said O'Neil provided transportation three times during the summer to Lee F. Damron, FBI Center St. graduate of the O'Neil Center, who, according to the FBI, is a fugitive wanted on a charge of interstate transportation of a stolen car.

Starting today you can enjoy the Continental life '67 style.

Today people enjoy life more than ever. They can do more things than ever before. If they want to. Teach their children to ride. Enjoy boating. Own a good home—and even a second home.

And own a Lincoln Continental. Continental is the luxury car that belongs in today's good life. Designed for the uncluttered taste of our times, it is engineered to be the best car America has to offer.

Inside the 1967 Continental you'll find a new design instrument panel. A new warning light cluster. A new lane-changing signal that operates at a touch. A new ventilation system that can change the air inside your Continental with the windows up.

Luxury options? Certainly. A power seat with a power adjustable headrest and new reclining feature. An improved automatic temperature control system. A new automatic speed control operated by a push button at the end of the turn-signal lever. And many more.

For 1967, Continental has also redesigned the configuration of the taillights and restyled the grille. But the basic contemporary design remains unchanged. We don't believe in

change for the sake of change. A Continental idea that gives you lasting investment value.

It's a good car; built to the world's highest standards. Your Continental dealer invites you to see and drive the 1967 Continental. To discover how close you may be to owning a Continental. And to add the model of your choice to the good things in your life this year.

AMERICAN MOTOR DIVISION LINCOLN MERCURY DIVISION

CALDOP Pharmacy

Professionally Dedicated To Your Good Health...

Registered Pharmacist, highly skilled and experienced, to protect the health of your family.

Prescriptions Filled While You Wait!

1145 TOLLAND FRIE, MANCHESTER, EXITE 55, WILBUR CROSS PARKWAY

ETHAN ALLEN

ADD MORE STORAGE WITH ETHAN ALLEN CUSTOM ROOM PLAN UNITS

Monday and Tuesday, Open till 8 P.M. Open Thursday and Friday Evenings. Closed Wednesdays

The Ladd & Hall Co., Inc. 20 UNION STREET—ROCKVILLE, CONN. Manchester 643-0890—Rockville 875-2534

GRANT GOING UP ON THE 67

PLYMOUTHS VALIANT FURY BELVEDERE

MANCHESTER PLYMOUTH

OPEN HOUSE ALL DAY TODAY TO 9 P.M. FREE COFFEE and DONUTS

MANCHESTER PARKADE MAIN STREET, MANCHESTER

GRANT'S DIAMOND JUBILEE ANNIVERSARY SALE

We "thank you" with the most spectacular storewide Anniversary Sale Savings in 60 years! 3 BIG DAYS ONLY...THURSDAY, FRIDAY, SATURDAY, SEPT. 29th, 30th and OCT. 1

OUR 60th YEAR

COTTON KNIT PJAMAS FOR TODDLERS, CHILDREN Sale 99c REG. 1.39

Brushed knit with long sleeves, plastic sole feet, 1-4, gripper waist, 3-6x, elastic waist. Paralela.

CHILDREN'S BUYS

LITTLE GIRLS' 2-PC. SLACK SETS Sale 2.44 REG. 2.99

Sweatshirt tops; washable corduroy slacks with band front. Sizes 3-6x.

LITTLE BOYS' LINED CORDUROY SLACKS Sale 1.27 REG. 1.69

Print flannel lined. Boxer waist, 2 swing pockets. Assorted colors. 3-6x. REG. 1.69

PRESHOO BOYS' FLANNEL SHIRTS Sale 99c

Machine washable, soft, warm. Choose from assorted plaids. 4 to 7. REG. 1.39

Grant-Crest

WASH 'N HANG BROCADE DRAPERIES Sale \$6 PR. SINGLE WIDTH 63" L

Everything you want—style, quality, easy-care, value! Rich-looking draperies of cotton and rayon with brocade elegance... in glowing decorator colors. Pinch-pleated tops give lavishly full folds. Deep bottom hems, blind-stitched side hems. Single width 72", 90" lengths. Multiple widths available. \$8 PR.

GRANT CREST KNITTING WORSTED Sale 77c REG. 1.00

PASTEL BEDSPREADS FROSTED WITH WHITE Sale 6.97 REG. 8.99

Machine washable cotton chenille. Twin or full size.

"SUPER VALUE" CLING TITE FURNITURE THROWNS Sale 2.97 REG. 4.99

60" x 72" Sale 2 for 4.97 72" x 108" Sale 4 for 9.97

Save 1.11 on OUR OWN BULKY TWEED OR HEATHER CARDIGANS Sale 4.88 REG. 5.99

Hand loomed wool heather, 34-42. Orlon® acrylic tweed knit, sizes 34 to 40.

BUY FOR WOMEN

NYLON TAILORED AND FANCY BRIEFS 3 PRS FOR ONLY \$1 REG. 1.5 to 7

Joyce Lane® PERMANENT PRESS SHIRTS Sale 2 for \$3 REG. 2.97 to 3.97

Buy two! Save 1.08 LUXURY LOOK BRAS Sale 1.05 REG. 1.59

FANCY NYLON SATIN OR NYLON TRICOT PETTI-SLIPS Sale 1.97 REG. 2.49

HOME BUYS

45-PIECE MELMAC® SET Sale 12.97 REG. 16.99

Break resistant dinnerware. Choose from 4 patterns. Service for 8.

HOUSEHOLD PLASTICS

Valves to \$1 Laundry waste basket, vegetable bin, and 6 other items. Sturdy, unbreakable. Sale 66c

Save 1.02! Permanent Press CRISP NO-IRON SLACKS FOR BOYS Sale 2.97 REG. 3.99

Fortrel® polyester/cotton; Ivy, continental styles. Favorite colors. 6 to 12. Youth sizes 27-30. Sale 3.97

Men's Pennleigh® Permanent Press CASUAL SLACKS IN 4 NO-IRON STYLES Sale 4.97 REG. 5.99 after this sale!

Scotchgard® protected casuals in Ivy style 29-42, Continental 25-30 013, Corduroys in Ivy style 29-42, Continental 22-34.

W.T. GRANT CO. MANCHESTER PARKADE MAIN STREET, MANCHESTER

PLENTY OF FREE PARKING

SEZ

IT'S KICKOFF TIME Time To Consider Floor Improvements Line Up With The Leaders

PLYWOOD CENTER PANELING ARMSTRONG CEILING TILE LES 'GARE KITCHEN CABINETS

SPECIAL — Sept. 29 to Oct. 1

SUNSET BIRCH 4 x 8 PANEL—6.45

PLYWOOD CENTER

(Next To Western Beef Mart) Mon., Tues., Wed., Sat.—9 A.M.—5 P.M. Thurs., Fri., 9 A.M.—9 P.M.—Phone 643-5874

AMERICA'S BEST PAINT VALUE MARY CARTER PAINTS

2 GALS. FOR ONLY \$6.98

Closeout Special! DRIVEWAY SEALER \$4.75 for 5 gals. Limited Quantities

Mary Carter Carries A Complete Line of Paints and Paint Accessories Priced To Suit Every Pocketbook

460 MAIN STREET—MANCHESTER NORTH OF THE POST OFFICE 29-42, Continental 22-34

SEZ

PLYWOOD CENTER PANELING ARMSTRONG CEILING TILE LES 'GARE KITCHEN CABINETS

SPECIAL — Sept. 29 to Oct. 1

SUNSET BIRCH 4 x 8 PANEL—6.45

MORIARTY BROTHERS, Inc. 301-315 CENTER STREET—MANCHESTER, CONN.

MANCHESTER PUBLIC MARKET

803-805 MAIN STREET

Free Main St. Parking and in the town-owned lot on Birch St.

CHOICE PRODUCE and BAKERY GOODS at all times!

Shop these WEEKEND SPECIALS!

TOP GRADE CHOICE BEEF CUTS: Boneless Center Out Chuck For A Nico Pot Roast 79c, Best Cut Of Rib Roast, For A Tasty Oven Roast 99c, Lean, Fresh Ground Chuck Beef 2 lbs. \$1.50, Minute Fresh Hamburg 2 lbs. \$1.30, All Lean! Round Ground 98c, Native Veal, Beef and Pork Combination. Ground TWICE for a nice meat loaf! lb. 79c.

FANCY, TOP GRADE FRESH POULTRY: FRESH 4 1/2-5 LB. YOUNG FOWL 39c, ABOUT 5 LBS. Roasting Chickens 49c, CUT-UP, READY FOR THE PAN FRYERS 39c, LEGS Meaty, (quartered) 49c, On Own Make, Pure Pork, Large and Meaty 69c, BREASTS 29c, CHICKEN WINGS 29c, FRESH LIVERS 69c.

PURE PORK ITEMS: Small, Lean, Strictly Fresh, 5-6 Lbs. Pork Shoulders 55c, Small, Fresh, Genuine Pork Sparoribs 69c, Our own make, pure pork, made from fresh pork butts and seasoned just right with sugar and spices; Link Sausage 98c, Our Own Make, Medium Hot Italian Sausage 89c, On Own Make, Pure Pork, No Cereal Added Sausage Meat 79c, About 1 Lb. Fresh Pork Links For Roasting and Cut Pork Chops.

Village Bootery

Barbican comfortable suede buckles up a smart town and country walk. In glove grain leathers with round square toe, chunky heel.

Barbican comfortable suede buckles up a smart town and country walk. In glove grain leathers with round square toe, chunky heel.

OPEN THURS. FRI. 10:30-9 P.M. MON. TUES. 10:30-8 P.M. Rt. 85, Taletsville—We Are Located Next To The "Treat Shoppe" EASY PARKING—TEL. 643-0808



Police Hunting Car That Ran Across Lawns

Police were searching today for the driver of a dark green car who uprooted a bush, mangled flowers and sidestepped a small maple tree early this morning as he recklessly maneuvered his car across the lawns in front of four Oak Grove St. homes.

Democrats View Campaign Buttons (Democratic Ones) Attulo Frassinelli, right, Democratic candidate for lieutenant governor, gets some help in admiring a collection of campaign buttons at last night's opening of Vernon Democratic Headquarters.

NOTICE ROOSEVELT MILLS RETAIL STORE NOW OPEN WED. THURS. FRI. NIGHTS 11 9 P.M. (MON., TUES. & SAT. TILL 5:00)

FALL ANNIVERSARY SALE SEPTEMBER 29 TO OCTOBER 8

FAMOUS Black & Decker 7 1/4" UTILITY SAW FALL SPECIAL 29.99

DUST-PROOF FURNACE FILTER 49c

STORM KING HYDRAULIC DOOR CLOSER 1.75

30" 5-PI. HAND SAW 3.99

THE W.G. GLENNEY CO. MANCHESTER 649-5253

SMALL CHANGE ADDS UP TO SPECIALS Thurs, Fri, Sat, Sept. 29, 30, 31

LEAN, TENDER 5-RIB PORTION PORK ROAST 43c lb.

FULL CUT RIB HALF PORK ROAST 59c lb

FRESH PRODUCE LARGE TENDER ICEBERG LETTUCE hd. 25c

TOKAY GRAPES 2 lbs. 29c

SWEET LIFE PINEAPPLE JUICE 2 46 OZ. CANS 45c

FIRST FOOD STORE OF MANCHESTER OPEN WED., THURS., FRI. TILL 9 P.M. — SAT. TILL 6:30 P.M.

Hebron Building Committee Rejects All School Bids as Too High

The school building committee Monday evening at 7:30 in the town office building for the business proper to come before the meeting.

Room Mothers Feted at Tea

Over 80 persons attended a tea for Room Mothers and teachers Tuesday afternoon at Bentley School.

AN Club to Fete Camp Volunteers

The Army & Navy Club on Oct. 12, will hold its third annual dinner to honor those who made the Kennedy Day Camp a successful operation.

FAIRWAY just received our holiday cake and cookie tins!

A special invitation to the premiere showing of the exciting 1967 Mercurys featuring the all new Mercury Cougar

Robert Hall FASHIONABLE CLOTHING FAMOUS HALL-PREST NEVER-IRON DRESS SLACKS

Robert Hall FASHIONABLE CLOTHING newest young-look excitement in SHETLAND WOOLS 29.95 to 39.95

South Windsor Council Votes to Pay Schweir And Debates Effect of Suit

In a 46-minute special meeting last night, the town council voted to authorize the payment of \$6,920 to John Schweir, Esq., and to transfer to him the services of outside legal counsel to prevent the contingency fund from the contingency fund and expenses fund.

Annual Meeting Slated Tonight For Foundation

The Manchester Scholarship Foundation, Inc., tonight will mark the beginning of its second year of operation with its annual dinner meeting at Cavanaugh's at 7 p.m. Members and guests of the foundation are expected to attend the event.

Mercury unleashes Cougar tomorrow!

Washington - U. S. exports of scientific, industrial and technical instruments and apparatus totaled \$508.8 million in 1965, a 2.2 per cent increase over 1964. The main exports were industrial measuring and controlling instruments and electronic test and measuring apparatus.

You SHOULD SHOP AT PINEHURST All Your Friends Do

NEW Betty Crocker MUFFINS Oatmeal or Chiquita Banana Nut 41c 2 for 75c. HILLS COFFEE lb. 72c. Rayette AQUA NET HAIR SPRAY (1.09) Special 67c. Betty Crocker BROWNIE MIX 2 for 59c. Bumble Bee Solid White TUNA FISH Can 39c. SCOTT JUMBO TOWELS White or Colored Each 27c 4 For \$1.00. Moriarty Brothers 301 CENTER ST. - 643-5135

You SHOULD SHOP AT PINEHURST All Your Friends Do

Boneless Center Slices BLOCK ISLAND SWORDFISH lower at Lb. 95c. FRESH OYSTERS. HADDOCK FLOUNDER. HOME STYLE SAUSAGE MEAT lb. 59c. ITALIAN STYLE MEAT SAUSAGE or Large Link PORK SAUSAGE Lb. 79c. PINEHURST HAMBURG Lb. 59c. LEAN U.S. CHOICE ROUND STEAK GROUND Lb. 99c. 3-in-1 BLEND Beef-Pork-Veal Lb. 79c. GORNER BEEF. BRISKET Lb. 69c. Center Cuts Lb. 99c. Dubuque Fleur de Lis fully cooked ham whole or shank lb. 89c.

Nine Seniors Named Merit Semifinalists

A total of nine seniors attending East Catholic and Manchester High Schools have been named semifinalists in the 1966-67 National Merit Scholarship competition, NMS officials announced today. They are among the 14,000 highest scoring students in 16,000 secondary schools nationwide who are eligible to become finalists.

Bishop Ward Named To Get 33rd Degree

Bishop W. Ralph Ward Jr. of the Syracuse (N.Y.) area of the Methodist Church and former pastor of South Methodist Church in Manchester, last night was elected to receive the 33rd degree of Scottish Rites Masonry for the Northern Jurisdiction of the United States.

Two Candidates In Minor Parties To Be on Ballot

The Fall election may be known as the year of minor party candidates. The Secretary of State has released the names of two local candidates who will appear on the voting machines this Fall.

McComb Is Bursar Of Chung Chi College

Donald P. McComb, formerly of Manchester, has been appointed bursar of Chung Chi College, a unit of the Chinese University in Hong Kong. The college is one of six colleges and universities aided by the United Board for Christian Higher Education.

FALL SPECIALS TEMPLE'S FLOOR COVERING ALL BUILDERS WELCOME-308 MAIN ST. - DAILY 9 to 6 - THURS., FRI. 9 to 9

SPECIAL OFFERING CERAMIC TILE BATHROOM Installed - up to 100 sq. ft. \$129.95. Free Estimates SHOP AT HOME DIAL 643-6662 No Obligation.

ARMSTRONG INLAID LINOLEUM Completely installed, over prepared floor, up to 9 x 12. Good choice of colors. \$74.95.

Special Offering BRAIDED RUGS Excellent Selection. 9 x 12 \$29.95. 4 x 5 \$14.95. ALL WOOL AND NYLONS 50% OFF. HAND MADE CAPE GOD RUNNERS 27" 100% VINYL HALL RUNNERS \$2.95. FORMICA COUNTER TOPS INSTALLED. VISIT THE MANCHESTER SHOE BOX 87 EAST CENTER ST. FINE WOMEN'S SHOES. FOR Cosmetics. IT'S Liggett's At The Parkade MANCHESTER 308 MAIN STREET ACROSS FROM BOURNE BUICK BUDGET TERMS ARRANGED

FREE WITH ANY PURCHASE 2' x 3' NYLON THROW RUGS FINISHED ENDS. INSTALLATION SPECIAL. VINYL LINOLEUM Installed in room up to 9 x 12. NOW ONLY \$39.00. MAGEE WALL TO WALL CARPET DUPONT 901 NYLON and FAMOUS HURCLON. \$8.75 sq. yd. Installed in any room with padding and labor.

You SHOULD SHOP AT PINEHURST All Your Friends Do. PINEHURST HAMBURG Lb. 59c. LEAN U.S. CHOICE ROUND STEAK GROUND Lb. 99c. 3-in-1 BLEND Beef-Pork-Veal Lb. 79c.

You SHOULD SHOP AT PINEHURST All Your Friends Do. With cooler weather our meat manager thought it time for a feature on U. S. choice lean GORNER BEEF. Carefully trimmed briskets, corned to perfection. Head out or whole. BRISKET Lb. 69c. Center Cuts Lb. 99c. Dubuque Fleur de Lis fully cooked ham whole or shank lb. 89c.

You SHOULD SHOP AT PINEHURST All Your Friends Do. Our meat department will offer more of those very tender U. S. Prime and U. S. Choice Sirloin, Porterhouse and Club Steaks. Boneless Chuck Roasts, U. S. Choice 79c and 89c, U. S. Prime 89c and 99c lb. For leaner Shoulder Lamb Chops 99c lb, small U. S. Choice Lamb Legs 79c lb. come to Pinehurst...

You've heard old Titus Moody tell about the quality of Pepperidge Farm frozen turnovers. Buy them here this week at special prices. Apple Turnovers each 39c 4 for \$1.49. Apple Strudel each 49c. Shurfine Pumpkin or Mince 29 oz. Pies each 33c. Shurfine Meat Pies (Individual Size) Beef, Turkey or Chicken 2 for 45c 4 for 79c. Nabisco's New Snack PIEK CHICKS 43c. Keebler's New PITTER PATTER Cookies 49c. Pinehurst Grocery, Inc.

You SHOULD SHOP AT PINEHURST All Your Friends Do. BONELESS CENTER SLICES BLOCK ISLAND SWORDFISH lower at Lb. 95c. FRESH OYSTERS. HADDOCK FLOUNDER. HOME STYLE SAUSAGE MEAT lb. 59c. ITALIAN STYLE MEAT SAUSAGE or Large Link PORK SAUSAGE Lb. 79c. PINEHURST HAMBURG Lb. 59c. LEAN U.S. CHOICE ROUND STEAK GROUND Lb. 99c. 3-in-1 BLEND Beef-Pork-Veal Lb. 79c. GORNER BEEF. BRISKET Lb. 69c. Center Cuts Lb. 99c. Dubuque Fleur de Lis fully cooked ham whole or shank lb. 89c.

You SHOULD SHOP AT PINEHURST All Your Friends Do. On September 26, in a public debate, both candidates for the gubernatorial election, agreed that "water pollution" was one of Connecticut's main problems. Nate Agostinelli pledged, several weeks ago, to work for cleaner water for Manchester's children and adults. It is because of his ability to "look ahead" that NATHAN G. AGOSTINELLI Is Needed For BOARD OF DIRECTORS. LEVER 1B. LEVER 1B.

On September 26, in a public debate, both candidates for the gubernatorial election, agreed that "water pollution" was one of Connecticut's main problems. Nate Agostinelli pledged, several weeks ago, to work for cleaner water for Manchester's children and adults. It is because of his ability to "look ahead" that NATHAN G. AGOSTINELLI Is Needed For BOARD OF DIRECTORS. LEVER 1B. LEVER 1B. Mr. Agostinelli's slogan "Bring Government Back To The People" is not only common sense but American-Type Government, Vote Republican. * VOTE REPUBLICAN Monday Oct. 3 * Mr. Agostinelli's slogan "Bring Government Back To The People" is not only common sense but American-Type Government, Vote Republican. SPONSORED BY THE COMMITTEE FOR NATHAN G. AGOSTINELLI

Merit Scholarship semifinalists from East Catholic: Kathleen McDermott, center; Clockwise from top left are Wesley Gryk Jr., Stephen Breen, Barbara Stanton and Susan Gryk. (Herald photo by Orlina). Manchester High semifinalists: Seated, right is Jill Horvath. Boys from left are Barry Sandala, Kenneth Walker and David Dixon. (Herald photo by Pinto).

puts you in charge. Life can be beautiful when you carry the Connecticut Charge Card. It lets you do the things you want. Have the things you want. Without carrying around a lot of cash. Or getting a lot of bills. One card... one bill... one check. That's all it takes to be in command in thousands of stores all over Connecticut. Be the woman who carries the Connecticut Charge Card. It puts you in charge. THE CONNECTICUT BANK AND TRUST COMPANY 15 N. MAIN ST. 893 MAIN ST. MANCHESTER PARKADE

Man Gets Jail Term, Escapes from Court

James L. Dietrichsen, 21, bolted from Police Headquarters at 10:30 this morning—minutes after he was sentenced in the upstairs courtroom to a year in jail for larceny, breaking and entering with criminal intent, and breach of peace.

State News Roundup

(Continued from Page One)

At precisely this afternoon, he was being led to the station's lobby under the guard of a policeman when he sprang out the front door and headed south on Lenox St.

12th Circuit Court Cases

Probable cause was found in the case of George H. Hicks, 19, of 9 Griswold St., who is charged with two counts of indecent assault, and his case was continued to the next session of Hartford Superior Court.

The area is residential but is wooded and criss-crossed with fences. Police believe he is holed up in bushes elsewhere in that area.

The escapee was wearing a brown jacket and black pants, and has "Nat" tattooed on his left forearm and "Cook" on his right forearm.

Police were checking the man's home, and the residence of his stepfather John J. Pontillo of Kelly Rd., Vernon.

Dietrichsen has a car but Police did not know whether he had the keys to it when he escaped.

They hoped to catch him before dark. "He's known to us, that's one thing," a patrolman said.

Another patrolman said he felt the convicted man had planned the escape before he went to court.

Dietrichsen had been led from Manchester Circuit Court on the second floor to a station to the lobby to give up personal effects before being jailed at the station.

Dietrichsen was in court this morning to face charges which stemmed from a theft of a safe from Liberty Mutual Insurance Co. in the Andrews Building at 85 E. Colter St. last month.

Hicks was charged with a first count of indecent assault after police were notified that he allegedly molested a 12-year-old girl on Aug. 12. A second count was added after a 19-year-old girl identified Hicks through a one-way mirror at the police station as the person who momentarily grabbed her as she was walking along S. Main St., and fled.

On the stand, the 9-year-old testified that she and her friend were playing in the woods behind her house and that Hicks had taken her into the woods where he molested her.

Hicks himself testified he did not molest the girl. He said he had been in the woods in one instance but did not molest her.

Police found the safe, which contained \$200 in cash, shortly afterward in woods near the Villa Lousia at the Glassborough town line.

He was arrested on a warrant Aug. 18 and has been free on \$200 bond since then.

Police found the safe, which contained \$200 in cash, shortly afterward in woods near the Villa Lousia at the Glassborough town line.

Police found the safe, which contained \$200 in cash, shortly afterward in woods near the Villa Lousia at the Glassborough town line.

Police found the safe, which contained \$200 in cash, shortly afterward in woods near the Villa Lousia at the Glassborough town line.

Police found the safe, which contained \$200 in cash, shortly afterward in woods near the Villa Lousia at the Glassborough town line.

Economists Foresee Recession by 1970

(Continued from Page One)

The NABE members forecast a rise of 2.5 per cent in consumer prices from the final quarter of 1967 to the last quarter of 1968, compared with a 2.6 per cent rise in the preceding 12 months.

When asked if they expected a recession by 1970, they said: "It is about right" and 50 per cent thought it "too restrictive."

The NABE members forecast a rise of 2.5 per cent in consumer prices from the final quarter of 1967 to the last quarter of 1968, compared with a 2.6 per cent rise in the preceding 12 months.

When asked if they expected a recession by 1970, they said: "It is about right" and 50 per cent thought it "too restrictive."

The NABE members forecast a rise of 2.5 per cent in consumer prices from the final quarter of 1967 to the last quarter of 1968, compared with a 2.6 per cent rise in the preceding 12 months.

When asked if they expected a recession by 1970, they said: "It is about right" and 50 per cent thought it "too restrictive."

The NABE members forecast a rise of 2.5 per cent in consumer prices from the final quarter of 1967 to the last quarter of 1968, compared with a 2.6 per cent rise in the preceding 12 months.

When asked if they expected a recession by 1970, they said: "It is about right" and 50 per cent thought it "too restrictive."

The NABE members forecast a rise of 2.5 per cent in consumer prices from the final quarter of 1967 to the last quarter of 1968, compared with a 2.6 per cent rise in the preceding 12 months.

About Town Dominican Republic Battered by Storm

(Continued from Page One)

The Daughters of Isabella will sponsor a rummage sale Thursday, Oct. 6, from 9:30 a.m. to 4 p.m. at Miller's Restaurant, Center St.

The Daughters of Isabella will sponsor a rummage sale Thursday, Oct. 6, from 9:30 a.m. to 4 p.m. at Miller's Restaurant, Center St.

The Daughters of Isabella will sponsor a rummage sale Thursday, Oct. 6, from 9:30 a.m. to 4 p.m. at Miller's Restaurant, Center St.

The Daughters of Isabella will sponsor a rummage sale Thursday, Oct. 6, from 9:30 a.m. to 4 p.m. at Miller's Restaurant, Center St.

The Daughters of Isabella will sponsor a rummage sale Thursday, Oct. 6, from 9:30 a.m. to 4 p.m. at Miller's Restaurant, Center St.

The Daughters of Isabella will sponsor a rummage sale Thursday, Oct. 6, from 9:30 a.m. to 4 p.m. at Miller's Restaurant, Center St.

The Daughters of Isabella will sponsor a rummage sale Thursday, Oct. 6, from 9:30 a.m. to 4 p.m. at Miller's Restaurant, Center St.

The Daughters of Isabella will sponsor a rummage sale Thursday, Oct. 6, from 9:30 a.m. to 4 p.m. at Miller's Restaurant, Center St.

The Daughters of Isabella will sponsor a rummage sale Thursday, Oct. 6, from 9:30 a.m. to 4 p.m. at Miller's Restaurant, Center St.

Town Notified Of Injury Claim

(Continued from Page One)

A N School St. man, on behalf of his six-year-old daughter, has notified the town of injury claims she sustained in a fall Sept. 17, down a catch basin at N. School and Colway Sts.

A N School St. man, on behalf of his six-year-old daughter, has notified the town of injury claims she sustained in a fall Sept. 17, down a catch basin at N. School and Colway Sts.

A N School St. man, on behalf of his six-year-old daughter, has notified the town of injury claims she sustained in a fall Sept. 17, down a catch basin at N. School and Colway Sts.

A N School St. man, on behalf of his six-year-old daughter, has notified the town of injury claims she sustained in a fall Sept. 17, down a catch basin at N. School and Colway Sts.

A N School St. man, on behalf of his six-year-old daughter, has notified the town of injury claims she sustained in a fall Sept. 17, down a catch basin at N. School and Colway Sts.

A N School St. man, on behalf of his six-year-old daughter, has notified the town of injury claims she sustained in a fall Sept. 17, down a catch basin at N. School and Colway Sts.

A N School St. man, on behalf of his six-year-old daughter, has notified the town of injury claims she sustained in a fall Sept. 17, down a catch basin at N. School and Colway Sts.

A N School St. man, on behalf of his six-year-old daughter, has notified the town of injury claims she sustained in a fall Sept. 17, down a catch basin at N. School and Colway Sts.

A N School St. man, on behalf of his six-year-old daughter, has notified the town of injury claims she sustained in a fall Sept. 17, down a catch basin at N. School and Colway Sts.

Forbes-Roberts

(Continued from Page One)

The bride was given in marriage by her father. She wore a full-length Alencon applique, pearl and white tulle gown with beauteous veil and an overskirt which formed the chapel train. Her bouffant sleeve-length veil of silk illusion fabric was arranged in neat, trimmed peau de soie headdress, and she carried a bouquet of roses, carnations, lilies.

The bride was given in marriage by her father. She wore a full-length Alencon applique, pearl and white tulle gown with beauteous veil and an overskirt which formed the chapel train. Her bouffant sleeve-length veil of silk illusion fabric was arranged in neat, trimmed peau de soie headdress, and she carried a bouquet of roses, carnations, lilies.

The bride was given in marriage by her father. She wore a full-length Alencon applique, pearl and white tulle gown with beauteous veil and an overskirt which formed the chapel train. Her bouffant sleeve-length veil of silk illusion fabric was arranged in neat, trimmed peau de soie headdress, and she carried a bouquet of roses, carnations, lilies.

The bride was given in marriage by her father. She wore a full-length Alencon applique, pearl and white tulle gown with beauteous veil and an overskirt which formed the chapel train. Her bouffant sleeve-length veil of silk illusion fabric was arranged in neat, trimmed peau de soie headdress, and she carried a bouquet of roses, carnations, lilies.

The bride was given in marriage by her father. She wore a full-length Alencon applique, pearl and white tulle gown with beauteous veil and an overskirt which formed the chapel train. Her bouffant sleeve-length veil of silk illusion fabric was arranged in neat, trimmed peau de soie headdress, and she carried a bouquet of roses, carnations, lilies.

The bride was given in marriage by her father. She wore a full-length Alencon applique, pearl and white tulle gown with beauteous veil and an overskirt which formed the chapel train. Her bouffant sleeve-length veil of silk illusion fabric was arranged in neat, trimmed peau de soie headdress, and she carried a bouquet of roses, carnations, lilies.

The bride was given in marriage by her father. She wore a full-length Alencon applique, pearl and white tulle gown with beauteous veil and an overskirt which formed the chapel train. Her bouffant sleeve-length veil of silk illusion fabric was arranged in neat, trimmed peau de soie headdress, and she carried a bouquet of roses, carnations, lilies.

The bride was given in marriage by her father. She wore a full-length Alencon applique, pearl and white tulle gown with beauteous veil and an overskirt which formed the chapel train. Her bouffant sleeve-length veil of silk illusion fabric was arranged in neat, trimmed peau de soie headdress, and she carried a bouquet of roses, carnations, lilies.

The bride was given in marriage by her father. She wore a full-length Alencon applique, pearl and white tulle gown with beauteous veil and an overskirt which formed the chapel train. Her bouffant sleeve-length veil of silk illusion fabric was arranged in neat, trimmed peau de soie headdress, and she carried a bouquet of roses, carnations, lilies.

New African Country To Be Independent

(Continued from Page One)

Commonwealth and will continue to rely on aid from Britain, Khama, who would not be permitted to go to a hotel, movie or restaurant in South Africa with his white wife, hopes to establish a link between the black north and white south.

Commonwealth and will continue to rely on aid from Britain, Khama, who would not be permitted to go to a hotel, movie or restaurant in South Africa with his white wife, hopes to establish a link between the black north and white south.

Commonwealth and will continue to rely on aid from Britain, Khama, who would not be permitted to go to a hotel, movie or restaurant in South Africa with his white wife, hopes to establish a link between the black north and white south.

Commonwealth and will continue to rely on aid from Britain, Khama, who would not be permitted to go to a hotel, movie or restaurant in South Africa with his white wife, hopes to establish a link between the black north and white south.

Commonwealth and will continue to rely on aid from Britain, Khama, who would not be permitted to go to a hotel, movie or restaurant in South Africa with his white wife, hopes to establish a link between the black north and white south.

Commonwealth and will continue to rely on aid from Britain, Khama, who would not be permitted to go to a hotel, movie or restaurant in South Africa with his white wife, hopes to establish a link between the black north and white south.

Commonwealth and will continue to rely on aid from Britain, Khama, who would not be permitted to go to a hotel, movie or restaurant in South Africa with his white wife, hopes to establish a link between the black north and white south.

Commonwealth and will continue to rely on aid from Britain, Khama, who would not be permitted to go to a hotel, movie or restaurant in South Africa with his white wife, hopes to establish a link between the black north and white south.

Commonwealth and will continue to rely on aid from Britain, Khama, who would not be permitted to go to a hotel, movie or restaurant in South Africa with his white wife, hopes to establish a link between the black north and white south.

Rig Left Behind

(Continued from Page One)

Both Khama and Chief Lele, South African prime minister, recognize that their new nation's economic and political survival depend in large part on friendly relations with South Africa.

Both Khama and Chief Lele, South African prime minister, recognize that their new nation's economic and political survival depend in large part on friendly relations with South Africa.

Both Khama and Chief Lele, South African prime minister, recognize that their new nation's economic and political survival depend in large part on friendly relations with South Africa.

Both Khama and Chief Lele, South African prime minister, recognize that their new nation's economic and political survival depend in large part on friendly relations with South Africa.

Both Khama and Chief Lele, South African prime minister, recognize that their new nation's economic and political survival depend in large part on friendly relations with South Africa.

Both Khama and Chief Lele, South African prime minister, recognize that their new nation's economic and political survival depend in large part on friendly relations with South Africa.

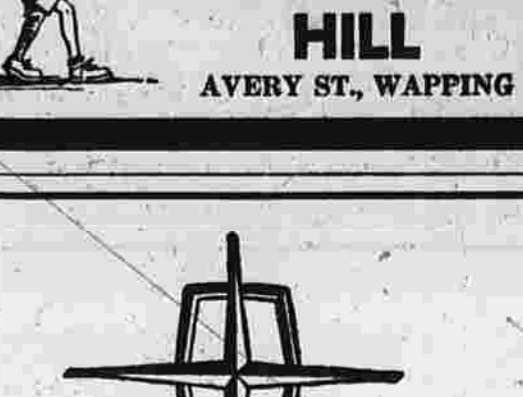
Both Khama and Chief Lele, South African prime minister, recognize that their new nation's economic and political survival depend in large part on friendly relations with South Africa.

Both Khama and Chief Lele, South African prime minister, recognize that their new nation's economic and political survival depend in large part on friendly relations with South Africa.

Both Khama and Chief Lele, South African prime minister, recognize that their new nation's economic and political survival depend in large part on friendly relations with South Africa.

LAST CALL for PEAGHES!

Still plenty of Apples & Pears ORCHARD HILL AVERY ST., WAPPING



AMERICA'S MOST DISTINGUISHED MOTORCAR

A special invitation to the premiere showing of the 1967 LINCOLN CONTINENTAL is extended to you

Models now on display We are open this Thursday night

MORIARTY BROTHERS Connecticut's Oldest L-M Dealer Manchester, Connecticut

MORIARTY BROTHERS Connecticut's Oldest L-M Dealer Manchester, Connecticut

MORIARTY BROTHERS Connecticut's Oldest L-M Dealer Manchester, Connecticut

MORIARTY BROTHERS Connecticut's Oldest L-M Dealer Manchester, Connecticut

12th Circuit Court Cases (Continued from Page One)

Option on Land Taken by Town (Continued from Page One)

Funerals (Continued from Page One)

Personal Notices (Continued from Page One)

Open Forum (Continued from Page One)

Card of Thanks (Continued from Page One)

Personal Notices (Continued from Page One)

Open Forum (Continued from Page One)

Card of Thanks (Continued from Page One)

Walgreen Agency ONE CENT SALE GOSPEL SERVICES Monday thru Friday 7:30 P.M. Sunday—7:00 P.M. GOSPEL HALL 415 CENTER STREET

Bourne Buick Inc. 285 MAIN STREET, MANCHESTER, CONN. Cordially invites you to its... PREMIERE SHOWING THIS EVENING September 29, 1966

LAST CALL! YEAR-END SALE Brand New 1966 MERCURY'S from Connecticut's Oldest Lincoln-Mercury Dealer WE TRY HARDER TO KEEP YOU HAPPIER!

Columbia Rev. Murphy Leaves for Few Weeks

The Rev. Hugh J. Murphy, pastor of St. Columba's Church will be away for a few weeks.

The Rev. High J. Murphy, pastor of St. Columba's Church will be away for a few weeks.

The Rev. High J. Murphy, pastor of St. Columba's Church will be away for a few weeks.

The Rev. High J. Murphy, pastor of St. Columba's Church will be away for a few weeks.

The Rev. High J. Murphy, pastor of St. Columba's Church will be away for a few weeks.

The Rev. High J. Murphy, pastor of St. Columba's Church will be away for a few weeks.

The Rev. High J. Murphy, pastor of St. Columba's Church will be away for a few weeks.

The Rev. High J. Murphy, pastor of St. Columba's Church will be away for a few weeks.

The Rev. High J. Murphy, pastor of St. Columba's Church will be away for a few weeks.

Historical Society Host To 45 History Teachers

About 45 of Manchester's School's audio-visual department...

About 45 of Manchester's School's audio-visual department...

About 45 of Manchester's School's audio-visual department...

About 45 of Manchester's School's audio-visual department...

About 45 of Manchester's School's audio-visual department...

About 45 of Manchester's School's audio-visual department...

About 45 of Manchester's School's audio-visual department...

About 45 of Manchester's School's audio-visual department...

About 45 of Manchester's School's audio-visual department...

About 45 of Manchester's School's audio-visual department...

About 45 of Manchester's School's audio-visual department...

About 45 of Manchester's School's audio-visual department...

About 45 of Manchester's School's audio-visual department...

LaBonne Backs Incineration

George T. LaBonne of Glastonbury, Republican candidate for state senator from the 4th Senatorial District, today backed incineration as a possible remedy for refuse disposal problems.

George T. LaBonne of Glastonbury, Republican candidate for state senator from the 4th Senatorial District, today backed incineration as a possible remedy for refuse disposal problems.

George T. LaBonne of Glastonbury, Republican candidate for state senator from the 4th Senatorial District, today backed incineration as a possible remedy for refuse disposal problems.

George T. LaBonne of Glastonbury, Republican candidate for state senator from the 4th Senatorial District, today backed incineration as a possible remedy for refuse disposal problems.

George T. LaBonne of Glastonbury, Republican candidate for state senator from the 4th Senatorial District, today backed incineration as a possible remedy for refuse disposal problems.

George T. LaBonne of Glastonbury, Republican candidate for state senator from the 4th Senatorial District, today backed incineration as a possible remedy for refuse disposal problems.

George T. LaBonne of Glastonbury, Republican candidate for state senator from the 4th Senatorial District, today backed incineration as a possible remedy for refuse disposal problems.

George T. LaBonne of Glastonbury, Republican candidate for state senator from the 4th Senatorial District, today backed incineration as a possible remedy for refuse disposal problems.

George T. LaBonne of Glastonbury, Republican candidate for state senator from the 4th Senatorial District, today backed incineration as a possible remedy for refuse disposal problems.

George T. LaBonne of Glastonbury, Republican candidate for state senator from the 4th Senatorial District, today backed incineration as a possible remedy for refuse disposal problems.

George T. LaBonne of Glastonbury, Republican candidate for state senator from the 4th Senatorial District, today backed incineration as a possible remedy for refuse disposal problems.

George T. LaBonne of Glastonbury, Republican candidate for state senator from the 4th Senatorial District, today backed incineration as a possible remedy for refuse disposal problems.

George T. LaBonne of Glastonbury, Republican candidate for state senator from the 4th Senatorial District, today backed incineration as a possible remedy for refuse disposal problems.

unbearable operating costs for small towns. My program would test these small units in one or two small towns to guarantee proper combustion and effective air pollution control. These units would consume fuel only when in use. As a town's pop-

ulation increased a second unit could be installed as needed. It is obvious that a program of refuse disposal under the aegis of the Department of Health, existing regulations, there is little room for flexible thinking and activity.

"The second provision would be a complete review of the powers and regulations governing the activities of the State Department of Health in relation to refuse disposal. Under existing regulations, there is little room for flexible thinking and activity.

"One state is geographically too small for an excessive use of the landfill type of operation. It is also a state oriented toward conservation and preservation of open space. The program I intend to sponsor will be consistent with this laudable objective."

He pledged that, if elected on Nov. 8, he will submit a bill to the 1967 State Assembly, to provide funds for the construction of pilot incinerators in small and medium-sized towns of the state.

He said that the state is too small for an excessive use of the landfill type of disposal operation, and that Connecticut is oriented toward conservation and preservation of its open spaces.

His full statement follows: "Refuse disposal continues to be a problem to all of the towns in the Fourth District, as well as the rest of the state. Even though Glastonbury has recently turned to sanitary landfill it was not the method preferred by the Republican majority. It is certainly not the wishes of the neighbors either. Unfortunately, it was the only choice available simply because state regulations prevented any other practical choice. It is this latter situation that needs immediate attention.

"Regardless of the care promised and exercised in the operation of a sanitary landfill, people still consider it a dump. Although this conclusion is not accurate, it prevails, not just in Glastonbury but in Manchester as well. In this latter town this method has been used with some adequacy for several years.

"The refuse problem will increase proportionately with the population and land use is not, nor can it be, a permanent solution. It is concern for the landfill neighbors in Glastonbury and Manchester, plus the need for an immediate new solution in Marlborough and East Hampton, that stimulates me to immediate action in the legislative arena.

"It is my plan to submit a bill with two principal provisions: The first would be to allocate \$200,000 to \$400,000 to a pilot program for small incinerators, reasonably priced and with low operating costs, available to small and medium sized towns. Currently, the only state-approved incinerators cost at least \$500,000 to install and, unless used near capacity, have

high operating costs. The second provision would be to provide for a complete review of the powers and regulations governing the activities of the State Department of Health in relation to refuse disposal. Under existing regulations, there is little room for flexible thinking and activity.

"The second provision would be a complete review of the powers and regulations governing the activities of the State Department of Health in relation to refuse disposal. Under existing regulations, there is little room for flexible thinking and activity.

"The second provision would be a complete review of the powers and regulations governing the activities of the State Department of Health in relation to refuse disposal. Under existing regulations, there is little room for flexible thinking and activity.

"The second provision would be a complete review of the powers and regulations governing the activities of the State Department of Health in relation to refuse disposal. Under existing regulations, there is little room for flexible thinking and activity.

"The second provision would be a complete review of the powers and regulations governing the activities of the State Department of Health in relation to refuse disposal. Under existing regulations, there is little room for flexible thinking and activity.

"The second provision would be a complete review of the powers and regulations governing the activities of the State Department of Health in relation to refuse disposal. Under existing regulations, there is little room for flexible thinking and activity.

"The second provision would be a complete review of the powers and regulations governing the activities of the State Department of Health in relation to refuse disposal. Under existing regulations, there is little room for flexible thinking and activity.

"The second provision would be a complete review of the powers and regulations governing the activities of the State Department of Health in relation to refuse disposal. Under existing regulations, there is little room for flexible thinking and activity.

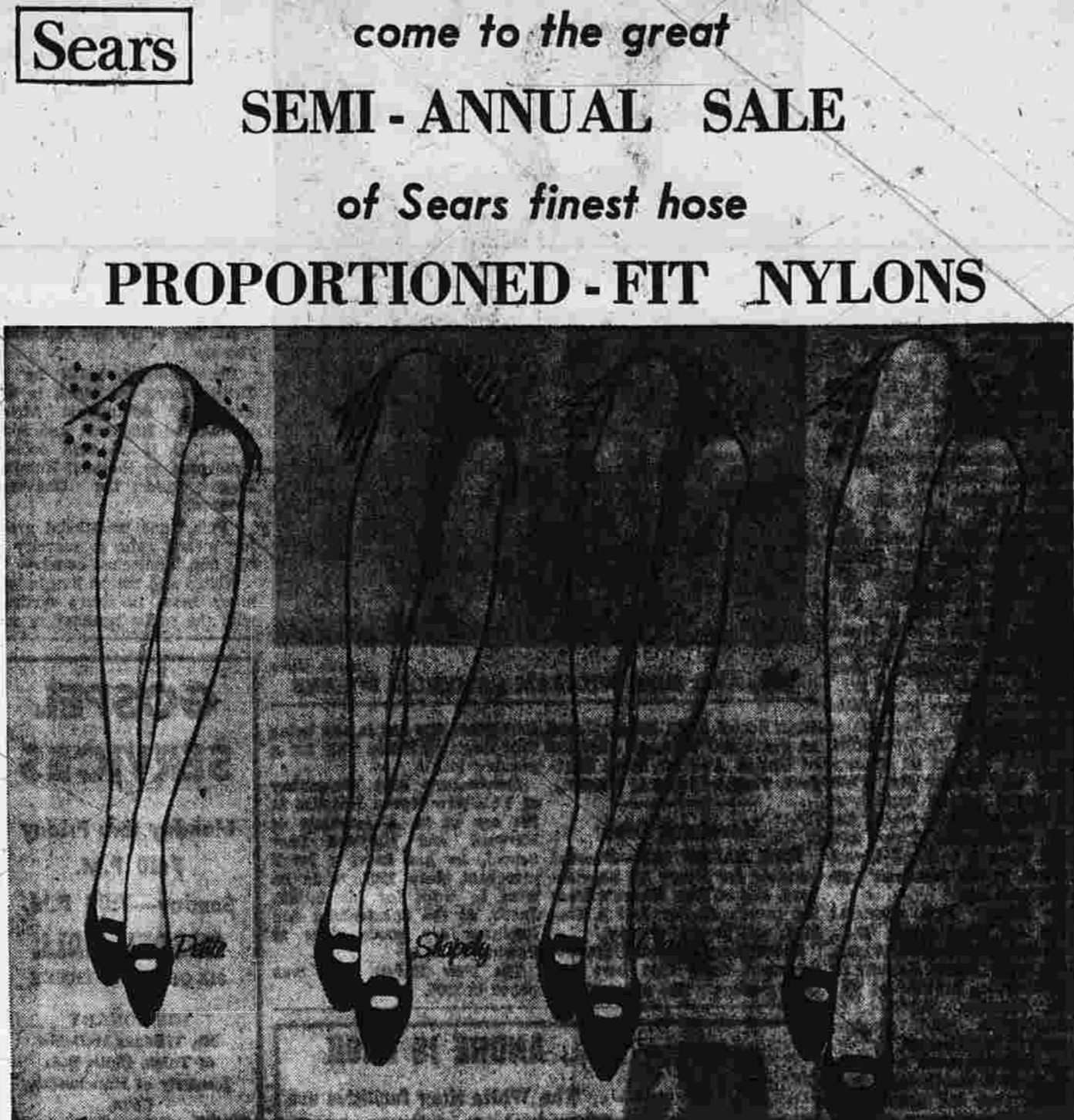
"The second provision would be a complete review of the powers and regulations governing the activities of the State Department of Health in relation to refuse disposal. Under existing regulations, there is little room for flexible thinking and activity.

"The second provision would be a complete review of the powers and regulations governing the activities of the State Department of Health in relation to refuse disposal. Under existing regulations, there is little room for flexible thinking and activity.

"The second provision would be a complete review of the powers and regulations governing the activities of the State Department of Health in relation to refuse disposal. Under existing regulations, there is little room for flexible thinking and activity.

"The second provision would be a complete review of the powers and regulations governing the activities of the State Department of Health in relation to refuse disposal. Under existing regulations, there is little room for flexible thinking and activity.

"The second provision would be a complete review of the powers and regulations governing the activities of the State Department of Health in relation to refuse disposal. Under existing regulations, there is little room for flexible thinking and activity.



WHAT A BUY AT 29% OFF! 99¢ regular \$1.39 pair

WHAT FIT! Proportioned in length and width. Contoured to you at L, high 2, knee 3, calf 4, ankle 5, instep.

WHAT FLATTERY! Petite for slender short, Shapely for slender average. Classic for full average, Tall for full long.

WHAT COLORS! New looking pastels to light up any outfit, versatile neutrals, sophisticated daries for dancing.

WHAT WEAR! Get better wear because you get better value. No strain to cause runs, no bagging to cause snags.

WHAT OPPORTUNITY! Join Sears Proportioned-Fit Hosiery Club. Get a 12th pair FREE when you buy 12 pairs in 18 months.

WHAT STYLES! Choose nylons in regular or mesh knit, seamline or full fashioned, business sheers or ultra sheers.

WHAT OPPORTUNITY! Join Sears Proportioned-Fit Hosiery Club. Get a 12th pair FREE when you buy 12 pairs in 18 months.

WHAT OPPORTUNITY! Join Sears Proportioned-Fit Hosiery Club. Get a 12th pair FREE when you buy 12 pairs in 18 months.

WHAT OPPORTUNITY! Join Sears Proportioned-Fit Hosiery Club. Get a 12th pair FREE when you buy 12 pairs in 18 months.

WHAT OPPORTUNITY! Join Sears Proportioned-Fit Hosiery Club. Get a 12th pair FREE when you buy 12 pairs in 18 months.

WHAT OPPORTUNITY! Join Sears Proportioned-Fit Hosiery Club. Get a 12th pair FREE when you buy 12 pairs in 18 months.

WHAT OPPORTUNITY! Join Sears Proportioned-Fit Hosiery Club. Get a 12th pair FREE when you buy 12 pairs in 18 months.

WHAT OPPORTUNITY! Join Sears Proportioned-Fit Hosiery Club. Get a 12th pair FREE when you buy 12 pairs in 18 months.

WHAT OPPORTUNITY! Join Sears Proportioned-Fit Hosiery Club. Get a 12th pair FREE when you buy 12 pairs in 18 months.

Vernon Jury Panel Completed

Seven more jurors were picked yesterday, completing the panel of 12, plus three alternates, to serve during the trial involving a \$15 million suit against the Johnson Memorial Hospital, Stafford Springs, and others.

The actual trial opens today. George Pallack is suing the hospital, several equipment companies and some hospital personnel. Pallack's wife died at the hospital June 1, 1965 while undergoing abdominal surgery.

The remainder of the jurors picked today were Gerald Eaton, Andover; Kenneth J. Hutchinson, Bolton; Oscar R. Gaudette, Mansfield and Henry J. Arfanski, Southington. Alternates will be Mrs. Mildred P. Bonkowski, Coventry; Samuel Shephardson, Mansfield and Paul Dalton, Vernon.

6-Time Loser In Maryland Finally Wins

BALTIMORE, Md. (AP) — "I can't help but feel deeply indebted to the voters of Maryland," said George P. Mahoney. "Some day, I'll be in a position to work for them."

That was in 1967. It was after he had failed twice for the Democratic nomination for governor and twice lost to Republicans for the U.S. senate.

He tried again for governor in 1968 and for the Senate in 1969 without success.

Now Mahoney has achieved a measure of success. Rep. Carlton R. Sickles, D-Md., conceded Wednesday that Mahoney, an opponent of open housing legislation, won the Democratic nomination for governor of Maryland in the primary Sept. 13.

It was a typical close finish for Mahoney. Official tabulation, lacking only a check of voting machines in Baltimore city, showed Mahoney's margin over Sickles was 1,828 votes.

Mahoney will face Republican Spiro T. Agnew, the chief executive of Baltimore County, and independent Hyman Pressman, controller of Baltimore city, in the general election Nov. 8.

"You've gotta have heart, have courage," Mahoney said after he polled 468,000 Democratic votes in 1962, a record till then, and still lost out for the Senate to Republican J. Glenn Beall.

"Yes, again," Mahoney, 64, said last June upon becoming a candidate for the nomination for governor for the first time. "If there's a way to lose an election, I'll find it," Mahoney once quipped.

Accord Reached, Air Strike Off NEW YORK (AP) — American Airlines planes kept flying today as a three-day ground crew strike of 12,000 ground personnel was called off half-an-hour before the deadline.

Settlement terms agreed to by officials of the AFL-CIO Transport Workers Union were not disclosed, but negotiators said they would recommend that members accept them.

In bargaining, begun last spring, the union had asked for a 30 per cent increase over a three-year period in wages that ranged from \$2.54 to \$3.57 an hour — in other words, from 75 cents to \$1.07 an hour plus fringe benefits.

American Airlines whose ground crew are represented by the TWU, was not affected by last summer's six week strike by the AFL-CIO Machinists' Union against Eastern, National, Trans World, Northwest and United Airlines.

If the strike by ground crew, mechanics, clerks, communications workers and supply personnel had not been canceled just before the 6:46 p.m. deadline Wednesday, it would have also idled 16,000 flight personnel and stopped service by the nation's second largest airline.

Nevertheless, American said, the uncertainty cut down the normal daily passenger load of 36,000 persons carried between 44 cities in the United States, Canada and Mexico.

Area Weather WINDSOR LOCKS (AP) — The U.S. Weather Bureau says unsettled weather covers a good portion of the eastern half of the nation this morning.

A series of weak storm centers continue to move south and east of Connecticut, bringing only cloudy skies to the state.

Meanwhile, another larger and more intense low pressure area over the Great Lakes is moving east.

This system should cause some occasional rain to fall over southern New England by this evening and continue on and off until early Friday morning.

A cold front associated with the system will pass through Friday morning and afterward skies should become partly steady.

Cool weather will continue.

Large advertisement for King's Self-Service Department Store 44th Anniversary Sale. Features a cartoon character with a shopping cart and a list of products and prices including Men's Permanent Press Dress Slacks, Men's Warmly Lined Jackets, Men's Washable Wool Blend Sport Shirts, Boys' Flannel Lined Boxer Longies, Girls' Zip-Out All-Weather Coats, Cotton Knit 2-Pc. Sleepers, Girls' Cotton Corduroy Lined Slacks, Men's Machine Washable Blanket Buys, Stretch Strap Permanent Press Fashion Bras, Plushy Orlon Pile Lined Fur Collared Car Coats, Hand Knitted Imported from Italy Luxury Cardigans, Fashion Dusters, King Size Tray Table, Boudoir & Bath Ensemble, Compact Revolving Turntable, Fine Selection Women's Dressy Hats, and various other items.

Large advertisement for Paul Dodge Leasing and Rentals. Features the text 'We're Holding Open House On The All New 67 CHEVROLET Here Now! CARTER CHEVROLET CO., INC. 1229 MAIN STREET MANCHESTER OPEN TO 9 P.M.' and includes a 'RENT A Completely Safety Checked Car' section with details on terms and conditions.

Large advertisement for Paul Dodge Leasing and Rentals, featuring the text 'We're Holding Open House On The All New 67 CHEVROLET Here Now! CARTER CHEVROLET CO., INC. 1229 MAIN STREET MANCHESTER OPEN TO 9 P.M.' and a 'RENT A Completely Safety Checked Car' section.



Princess Margrethe
COPENHAGEN, Denmark (AP) — Princess Margrethe, 36, heiress to the Danish throne, is to become officially engaged to a French nobleman diplomat next Wednesday.

The official announcement that King Frederik's eldest daughter has decided to marry Count Henri de Laborde de Monpezat will be made in the State Council meeting in Copenhagen.

The Frenchman, 32, third secretary in the London Embassy, is a Roman Catholic but plans to become a member of the Danish Lutheran state church.

His princess is bound by the constitution to be a Lutheran.

Observers said it had just learned of the incident and felt it should be told because of "the climate of hate that still permeates several states in America."

Cardinal Ruffini
VATICAN CITY (AP) — Lutheran Cardinal Ruffini, the Roman Catholic Church's first Negro cardinal, was once refused a haircut in a barber shop in New York City because of his color, the Vatican weekly L'Osservatore said Wednesday.

The report said the incident occurred while the cardinal, who is a Tanzanian and a prince of his Basia tribe, was still a bishop. He was elevated to the College of Cardinals in March 1963.

L'Osservatore said it had just learned of the incident and felt it should be told because of "the climate of hate that still permeates several states in America."

Manuela Vargas
NEW YORK (AP) — Manuela Vargas found she can get her car out of the pound with her reviews, her official

Jill St. John
HOLLYWOOD (AP) — Actress Jill St. John slipped and fell while on location at Hollywood's Riviera Country Club Wednesday and suffered a painful back injury.

An ambulance took her to her doctor's for X-rays.

George Romney
LANSING, Mich. (AP) — A politically precocious child of about 6 put Gov. George Romney of Michigan on the spot Wednesday.

Romney was about to cut a ribbon opening a new Republic

KLH
STEREO MUSIC SYSTEMS
AT
NORMAN'S
SHOP IN FOR AN EAR TITLING DEMONSTRATION
43 HARTFORD RD., MANCHESTER

DO YOU KNOW...

IN THE FUTURE IS THE TOWN GOING TO HAVE TO SPEND \$1,000,000 IN DOWNTOWN UTILITY REPAIRS?

RENEWAL WILL TAKE CARE OF THIS

VOTE YES FOR RENEWAL ON OCT. 3

This advertisement paid for by Manchester Residents

★ TRIPLE CHOICE SAVINGS

★ 2 NEW HIGHER DIVIDENDS.

An Excellent Rate - Any Way You Look At It!

4.75%

4.50%

4.50%

4.50%

4.50%

4.50%

4.50%

4.50%

4.50%

4.50%

4.50%

4.50%

4.50%

4.50%

4.50%

REGULAR SAVINGS ACCOUNTS EARN... 4 1/4%



WATCH FOR LUCKY MARKERS at PIZZA KING

L.T. WOOD

LOCKER PLANT and MEAT MARKET
ALL OUR MEATS ARE FRESHLY CUT AND DISPLAYED - NOT PREPACKAGED
FRESH MEATS - RETAIL DEPARTMENT

TOBIN'S FIRST PRIZE BONELESS - LEAN PORK ROLLS 69¢ lb

TOBIN'S SUGAR CURED SLICED BACON 79¢ lb

FOREQUARTERS OF WESTERN BEEF 49¢ lb

2 to 4 RIB ROASTS 8 to 10 RIB STEAKS 4 to 6 CHUCK STEAKS 4 to 6 CHUCK ROASTS 1 SHOULDER CLOD ROAST 5 to 6 LONDON BROIL 3 to 4 SOUP BROWNS 4 to 6 LBS. SHORT RIBS 4 to 8 LBS. BEEF STEW 10 to 15 LBS. FRESH BISKET 50 to 55 LBS. HAMBURG

NO EXTRA CHARGE FOR CUSTOM CUTTING, PACKAGING AND SHARP FREEZING

HOME FREEZER OWNERS
Let us fill your freezer with U.S.D.A. choice meats—Native poultry, Seabrook Farm fruits and vegetables. Save up to 20% and eat like a king.

We rent cold storage lockers for your frozen meats and vegetables for as little as \$1.25 a month. The locker holds about 250 pounds of meat. Compare this deal before you buy a home freezer.

IF YOU LIKE THE BEST GIVE US A TEST
51 BISSELL ST. REAR OF ICE PLANT 643-8424
PLENTY OF FREE PARKING SPACE

"Open House" AT SCRANTON MOTORS INC., ROCKVILLE
Lawrence A. Scranton

Robert Bell, Office Mgr. SALES
Leroy A. Liberty, Ser. Mgr. Ernest Scranton
Edward Stone, Parts Mgr. James Gorman
Douglas Getchell, Ser. Writer Howard E. Keeney
Joseph Scranton

Action Land - Showing 1967 OLDSMOBILES -

TORONADO - NINETY EIGHT
ALL NEW DELTA 88 CUSTOM
DELTA 88 - DELMONT 88
VISTA CRUISER - CUTLASS SUPREME F-85

GOOD SELECTION ON DISPLAY

Ride The Wide Track Winning Streak -

ALL NEW PONTIAC GRAND PRIX CONVERTIBLE and HARDTOP SPORT COUPE
BONNEVILLE BROUGHAM - NEW EXECUTIVE MODELS
VENTURA - CATALINA
ALL NEW 2+2 CONVERTIBLE & HARDTOP
GTO CONVERTIBLE & HARDTOP
WHAT AN ASSORTMENT OF SPORTS CARS
SERVICE TO OUR CUSTOMERS

SCRANTON MOTORS, Inc.

CADILLAC OLDSMOBILE PONTIAC
166 UNION STREET ROCKVILLE
TEL. MANCHESTER 643-9333 ROCKVILLE 675-9331

— OPEN DAILY —
THURSDAY & FRIDAY UNTIL 9:00 P.M. — ALL DAY SATURDAY

Columbia Church Guild Picks Aides For Season

The women's guild of the Congregational Church held its annual meeting last week. New officers, elected last spring, are Mrs. Wilbur Fletcher, president; Mrs. Austin Simmons, vice-president; Mrs. John Furryan, secretary, and Miss Jean Naich, treasurer.

The following committee appointments were announced by Mrs. Wilbur Fletcher, member-ship, Mrs. Philip H. Iban Jr., program, Mrs. George K. Evans, Mrs. William Robinson, Mrs. Warren Scamman; sunshine, Mrs. Raymond Judd; publicity, Mrs. Miss Natch; finance Mrs. Horace and Shurway; friendly service and material aid, Mrs. Emil Skolton; stewardship, Mrs. Emma and Spiritual Life, Mrs. Hayden Allen, Mrs. Emmons and Mrs. Clarence Jeffries; and church nursery staff recruiting, Mrs. Fletcher.

Mrs. Clifton Ladd, Mrs. Arthur Austin and Mrs. Judd, nominating committee elected from the floor, will fill any vacancies among the officers during the year and nominate a slate for the next annual election in May.

The unit, which has sponsored the community calendar over a period of years, will begin its soliciting for birthday listings to be completed by Oct. 30. Materials with which to work were distributed at this meeting by Miss Natch, calendar chairman.

Mrs. Judd is in charge of organization listings and has sent letters with order blanks to participating organizations to have groups interested, who do not previously listed meeting dates or other events, should contact Mrs. Judd. Most of the soliciting of advertisements has already been completed.

The picture on the 1967 calendar will feature Moore's Indian Charity School and point up the organization of the Columbia Historical Society.

School Water Test
Architect Roy Ferguson told the School Building Committee Thursday night that a new drilled well will undergo an eight-hour pump.

The test will determine the exact flow of water. It then will be purified, and a sample will be taken to the state Department of Health for testing. The engineer who installed the pump system estimated it at 160 feet with 60 gallons a minute.

The dug well, which has been the never-failing source of supply for the school, was deemed not to be treated for the terrific consumption of the enlarged school with its gym showers, dishwasher, and enrollment increase from the 142 in 1946 to 600 in 1966. It has been left untouched as a reserve in case of emergency.

Fire Marshall Inspects School
A letter from Fire Marshall Richard Davis and Deputy Marshall Thomas Chownee to the board of education reporting on their inspection of the school was read to committee members by Donald Tuttle, chairman of both groups.

He pointed out that several of the items said to be non-conforming to the fire code were responsible for the building committee. With the architect the committee made

inspections of fire extinguishers which the fire marshals had found difficult to remove from the walls.

It was determined that the new pressurized water extinguishers are too large for the wall enclosed walls provided for them. It was decided to hang the new extinguishers on the wall and put the old copper extinguishers in the walls. The marshals pointed out a need to put outside doors in the old section of the school in a good state of repair, as they found five in poor condition.

Tuttle suggested that this might be a job for the building committee to do if funds were available. Since the doors are in the old building and would come under alterations.

Ferguson was asked to look into this matter, advise what should be done, and get an estimate of costs. Bills approved for payment included \$3,300 for the building of a church nursery staff recruiting, Felix Di Stasio for building and clearing the new acreage; \$235 for kindergarten equipment and a lectern for the stage; \$55 to Walter Wigston for construction of movable stairs for the front of the stage in the gymnasium; a change order for \$1,314 for Jennie Sealay's requisition to Joseph S. Nashin of Willimantic, contractor for \$4,679; leaving a balance of \$4,215 withheld on the \$469,853 contract. Special

Ferguson told the committee there would be a credit of \$600 to the \$469,853 contract. Special

Cameras Filmbulbs Discount Prices Arthur Drug

WINDOW SHADES
WASHABLE INTERSTATE AQUA SHADES \$3.60 Made to Order With Your Rollers Full Line of Custom VENETIAN BLINDS
E. A. JOHNSON PAINT CO.
722 Main St.—Tel. 649-4501

IT'S TIME TO TAKE A STAND "ON SEAMLESS FLOORING"
With: **Duresque**
NEVER NEEDS WAX, COMPLETELY SEAMLESS
EXTREME DURABILITY, RESILIENT, UNLIMITED COLOR CHOICE
Floors, Walls, Counter Tops
Free Estimates Call 875-2042
W. G. SCHWARZ CO., Inc.
994 Hartford Turnpike—Rockville, Conn.

NOW!... at the Parkade SPECIAL PRICE!
Hazel Bishop cosmetic SALE!
savings up to 66%
Look how little you have to pay for a beautiful face.

NEED A SPECIAL CAR FOR A SPECIAL OCCASION?
Rent a new Comet or Mercury. Low Rates... Daily... Weekly... Monthly.

RESERVE A CAR NOW... CALL 643-5135

LEASING
One-Two-Three Year Leasing Plans All Makes and Models
MORIARTY BROTHERS
301 CENTER STREET OPEN EVENINGS
"Connecticut's Oldest Lincoln-Mercury Dealer"

iggett's DRUG STORE
at the PARKADE

NEED A SPECIAL CAR FOR A SPECIAL OCCASION?
Rent a new Comet or Mercury. Low Rates... Daily... Weekly... Monthly.

RESERVE A CAR NOW... CALL 643-5135

LEASING
One-Two-Three Year Leasing Plans All Makes and Models
MORIARTY BROTHERS
301 CENTER STREET OPEN EVENINGS
"Connecticut's Oldest Lincoln-Mercury Dealer"

iggett's DRUG STORE
at the PARKADE

NEED A SPECIAL CAR FOR A SPECIAL OCCASION?
Rent a new Comet or Mercury. Low Rates... Daily... Weekly... Monthly.

RESERVE A CAR NOW... CALL 643-5135

LEASING
One-Two-Three Year Leasing Plans All Makes and Models
MORIARTY BROTHERS
301 CENTER STREET OPEN EVENINGS
"Connecticut's Oldest Lincoln-Mercury Dealer"

iggett's DRUG STORE
at the PARKADE

Housing for the Elderly

McKEE STREET FIREHOUSE

HIGHLAND SCHOOL ADDITION

McKEE STREET FIREHOUSE

HIGHLAND SCHOOL ADDITION

McKEE STREET FIREHOUSE

HIGHLAND SCHOOL ADDITION

McKEE STREET FIREHOUSE

HIGHLAND SCHOOL ADDITION

McKEE STREET FIREHOUSE

HIGHLAND SCHOOL ADDITION

McKEE STREET FIREHOUSE

HIGHLAND SCHOOL ADDITION

McKEE STREET FIREHOUSE

HIGHLAND SCHOOL ADDITION

McKEE STREET FIREHOUSE

THESE CAPITAL PROJECTS WERE BI-PARTISAN FULLY SUPPORTED BY REPUBLICAN BOARD MEMBERS IN 1964 - 1966 BUT

McKEE STREET FIREHOUSE

HIGHLAND SCHOOL ADDITION

McKEE STREET FIREHOUSE

HIGHLAND SCHOOL ADDITION

McKEE STREET FIREHOUSE

HIGHLAND SCHOOL ADDITION

McKEE STREET FIREHOUSE

HIGHLAND SCHOOL ADDITION

McKEE STREET FIREHOUSE

HIGHLAND SCHOOL ADDITION

McKEE STREET FIREHOUSE

HIGHLAND SCHOOL ADDITION

McKEE STREET FIREHOUSE

HIGHLAND SCHOOL ADDITION

McKEE STREET FIREHOUSE

WE PART COMPANY HERE! THE VOTERS SHOULD HAVE A CHOICE ON THESE ITEMS PROPOSED FOR BONDING

● MUNICIPAL BUILDING \$675,000

● MAJOR SCHOOL REPAIRS 765,000

● ROAD REPAIRS 400,000

● STORM SEWERS 450,000

THE FOLLOWING ITEMS SHOULD BE PAID FROM CURRENT INCOME

● SWIMMING POOLS

● UNION POND IMPROVEMENTS

● AERIAL PHOTO MAPS

RETURN GOVERNMENT TO THE PEOPLE VOTE REPUBLICAN

MONDAY, OCTOBER 3rd FOR INFORMATION CALL 649-2850

MONDAY, OCTOBER 3rd FOR INFORMATION CALL 649-2850

MONDAY, OCTOBER 3rd FOR INFORMATION CALL 649-2850

MONDAY, OCTOBER 3rd FOR INFORMATION CALL 649-2850

MONDAY, OCTOBER 3rd FOR INFORMATION CALL 649-2850

MONDAY, OCTOBER 3rd FOR INFORMATION CALL 649-2850

School Board Candidates Answer LWV Questions

The League of Women Voters has been its custom to town election years, has asked candidates for the Manchester School Board, Democratic, Republican and Independent, to state their views on school issues which the League considers important to the town.

This year the League chose to question the candidates pertaining to the teacher involvement in educational policy, the recommended ratio between salary and non-salary expenditures, improvement in curriculum, and an observation that major curriculum and educational policy are neglected by the Board of Education.

The Herald once again is cooperating with the League in presenting the candidates' answers to the questions.

Questions

1. To what extent and in what specific ways do you think the classroom teacher should be involved in the determination of educational policy through a teacher organization?

2. The present ratio between salary and non-salary expenditures of the Manchester Board of Education is 88.2 per cent to 11.8 per cent. Do you feel that this ratio should be closer to the 85 per cent to 15 per cent recommended by professional educators? If so, how would you propose to achieve this?

3. In what areas would you suggest improvements in curriculum and how would you implement your suggestions?

4. A common observation is made that the time and attention of Board of Education members is generally concentrated on problems of budget, school maintenance and teacher negotiations, while major problems of curriculum and educational policy are neglected or referred to the professional educators. Please comment.

appropriate authorities as to their value and need.

4. This past year has made it abundantly clear that an undue amount of the board's time was spent on problems not dealing with the major problems of curriculum and educational policy.

I would propose that an individual or individuals with a combined educational and business background be delegated the duty of handling the preliminary matters dealing with items of budget, maintenance and negotiations; thereby freeing the board to concentrate on curriculum and educational policy on its own rather than rely solely on the professional educator.

By state law, however, the final decision concerning non-curriculum and policy items rests with the board.

to decide the issue by the Board of Education.

Would you recommend a thorough school board analysis of our school system to determine whether or not the buildings and facilities are being sufficiently utilized?

I believe that the townspeople should be made aware of a thorough analysis of our school facilities. This should be made by the members of the Board of Education to reveal to what degree of efficiency our schools are being used.

The public is paying a huge multimillion dollar budget for education and certainly is entitled to a clear and complete inventory of the facilities available in relation to the school population's needs.

"I am certain that if you had asked the above 6 questions of the candidates for the Board of Education a year ago, we would not have been so shamefully betrayed, as we have this time in the Hartford School Bus 'Flasco'."

man to replace Mrs. Katherine Bourn, he served as secretary, grade prior to his school.

Schaffer, a Democrat, is director of the Institute of Public Services at the University of Connecticut.

He earned his A.B. in political science and his M.A. in public administration from Syracuse University.

He is a past chairman of the finance committee and a former director of finance for the Town of West Hartford. He is a member of personnel and educational Policies Committees.

He lives at 116 Porter St.

1. Delineation of educational policy is the principal purpose of an elected board of education. Classroom teacher involvement in this process individually or collectively through a teacher organization should be advisory only.

The system or procedure of teacher recommendations affecting educational policy can be stipulated in a teacher-board contract, in board policy or both.

2. Personnel competency and directly related personnel costs must remain the major concern of the board. The recommended ratio can only be achieved when personnel requirements are met and salary expenditures. Adherence to this principle requires a delegation of authority to the board to set a minimum not to permit unrealistic salary and wage goals of employ groups to be equated with salary and working condition requirements.

3. Curriculum revision is often hampered by scheduling concerns of school administrators. Additional periods of science classes in the junior high schools has been consistently stressed as necessary by the curriculum revision committee of the board. This problem, plus the extension of foreign language programs into lower grades than at present are current problems that must receive additional board attention through its Educational Policies Committee.

4. Educational policy and related curriculum improvements are not isolated areas of a school system for personnel, budget and physical plant resources. It may appear to the interested public that the board is not interested in these areas, but it is in fact, through its Educational Policies Committee.

5. Educational policy and related curriculum improvements are not isolated areas of a school system for personnel, budget and physical plant resources. It may appear to the interested public that the board is not interested in these areas, but it is in fact, through its Educational Policies Committee.

in solicit the advice and opinion of teachers.

I believe that constructive advice should always be welcomed, and in fact be offered by anyone, but only the board of education should determine the time when such advice is needed.

2. I agree that the 85 per cent to 15 per cent ratio recommended by professional educators is the most desired ratio between salary and non-salary items in the budget. Our current ratio does not provide the balance which might help us overcome some of the deficiencies in the non-salary items, such as maintenance, teaching aids. Achieving this more desired ratio should be our goal, while maintaining our salary increases.

This might be achieved by encouraging greater public support of the non-salary items in the budget. However desirable this 85 per cent to 15 per cent ratio, I feel it is equally important to remain competitive as far as teachers' salaries are concerned.

3. I would suggest improvements in the following areas, and would recommend the allocation of the necessary funds and teachers to accomplish the following improvements:

a. Increased guidance for the student not going to college.

b. Strengthening the physical education program in the elementary school level in particular.

4. I feel that the board of education should be more involved with these major problems of curriculum and educational policy. The Educational Policies Committee does meet with the board periodically, but perhaps more frequently.

I think that the board should encourage the school administration to develop a sound set of administrative policies which are in line with board policies and which will improve our orderly administration.

5. I feel that the board of education should be more involved with these major problems of curriculum and educational policy. The Educational Policies Committee does meet with the board periodically, but perhaps more frequently.

FRANK U. LUPIN

Independent

Frank U. Lupin of 21 Sunset St. is an independent candidate for the three-year term from November 1966 to November 1969. An unaffiliated voter, he was a registered Republican until June 1 of this year.

A native of Cheshire, Mass., he is a graduate of Manchester High School and Tufts College, where he was awarded a bachelor of science degree in chemistry. He is a former teacher of high school mathematics and science in Dover, Mass., where he coached basketball, baseball and football. Since 1964, he has been employed at Pratt and Whitney, East Hartford, as a weights analyst in the Design Engineering Department.

Lupin returned his questionnaire unanswered. In lieu of a reply, he submitted the following open letter to the League of Women Voters:

"As I firmly believe that the questions of major importance to all Manchester voters have been overlooked in your questionnaire, I submit the following questions and answers instead:

1. What is your position regarding the busing of Hartford school children to Manchester schools? What do you intend to do about it?

"I am unambiguously opposed to any town or city to Manchester school busing contract for the year 1967-1968."

2. Will you work for and support a Town Ordinance to have only Manchester children attend our schools?

"I pledge my full support to a Town Ordinance designed to limit the use of all Manchester schools to Manchester children."

3. What is your position with respect to establishing a truly democratic procedure permitting any taxpayer to speak at school board meetings?

"I support the right of any taxpayer and voter to come before the Board of Education during at least one meeting each month to offer suggestions, criticisms, ideas, etc., which they may care to discuss. It is un-American to have the electorate gagged and silenced as has been the custom for the past several years."

4. What is your stand concerning any members of the Board of Education or the superintendent of schools working in the field of curriculum and educational policy, but the responsibilities of their positions should be assumed by them?"

ATTY. HERBERT A. PHELON JR.

Republican

Atty. Herbert A. Phelon Jr., a Republican, is making his first bid for the board of education.

An attorney with the firm of Beyer & Phelon, he earned a B.A. from Western University, and an LL.B. from the University of Connecticut.

He has experience as a partner, chairman of several municipal agencies, and directorship in the Child Guidance Clinic, as well as in the Child Guidance Clinic, as a member of the Board of Tax Review and as chairman of the Parking Authority. He is a member of the Army and Navy Club, Hartford County Bar Association, Connecticut Force veteran of World War II.

A native of Manchester, he was educated in the local school system.

1. The classroom teacher should have some valuable suggestions to aid the board in the determination of educational policy, therefore, the teacher should be encouraged to submit ideas concerning policy to the board either individually or through a teacher organization. It should be remembered, however, that the suggestions should be only advisory in nature as the final decision concerning educational policy rests with the board.

2. I would favor the ratio recommended by the professional educators provided the salary items did not have to be put back. I feel that a proper budget should be prepared which would all the appropriate authorities so as to satisfy all needs.

3. The overall curriculum should be improved in the following ways:

a. By the acquisition of teaching aids especially in the scientific field.

b. By expanding the physical education program especially on the elementary level.

c. By an improved school library program.

d. By the introduction of foreign languages at the junior high level; and

e. By increased emphasis on English composition at all levels.

All of the above could be implemented by choosing the ap-

WALTER DOLL JR.

Republican

Walter Doll Jr., a Republican, is a candidate for his first term on the Board of Education.

A resident of Manchester since 1958, he lives at 720 Spring St. with his wife and three of his six children.

He holds a BS degree in mechanical engineering from Harvard University and has taken additional graduate courses at the University of Connecticut and the Massachusetts Institute of Technology.

Doll is chief of technical staff in the engineering department of the Board of Education.

1. I feel that the board should have a representative of the C.A.N.E.L. engineering program, which would help him in fulfilling the duties of a board member.

He has also been a Club Scoutmaster for five years and has served as a technical advisor to the RPI Hartford Graduate Center.

1. Advisory suggestions from the teachers should be encouraged by the Board of Education to establish educational policy.

2. The rundown condition of some schools and equipment and the shortage of books, physical education equipment and teaching aids indicate that non-salary expenditures have been too low. Now a bond issue is necessary to correct some of these inadequacies. Provision for these in the annual budgets is more efficient and economical.

3. I have no major suggestions for improvements in curriculum at this time. I do think it would be desirable to have a standing committee on curriculum and educational policy.

BELDON H. SCHAFFER

Democrat

Beldon H. Schaffer, incumbent chairman of the Board of Education, is running for his second term on the board.

Before being named chair-

N. CHARLES BOGGINI

Democrat

N. Charles Boggini, a Democrat incumbent, is a candidate for the unexpired term ending November 1968, and is unopposed, due to a minority representation ruling by the secretary of state's office. He is now serving as a replacement for former Democratic board member Atty. William Collins, who resigned in August of 1965.

Boggini, a native of Italy, came to Manchester with his parents when he was three, graduated from Manchester High School and in 1934 from New York University.

A former social worker for New York City, he returned to Manchester in 1946 to set up his own business, The Charles Boggini Co., manufacturers of flooring extracts.

He is a member of the Democratic Town Committee and has served as the town's representative on the Board of Education since 1963.

He resides at 11 Spencer St.

1. A teacher has the right and the privilege to make any recommendations that he or she feels are important. He can decide whether to make such a recommendation through a teacher organization or he can go directly to the board. It is his own decision to make. However, the board is responsible for determining educational policy.

2. Yes, the ratio should be closer to a ratio of 85 per cent to 15 per cent. Non-salary items should not be starved for the sake of salaries. Personnel should be fairly and well paid and the salary schedule should be presented to the Board of Directors on its merits. In the event of a budget cut, all items should be considered equally.

3. I sometimes get the feeling that we should have more control over our schools that specifically prepare graduates for jobs when they graduate. This is especially true for students who are not going to college. All girl graduates should be exposed to good homemaking courses.

4. I feel that too often, boards of education get involved in administrative do not have the time to get involved in broader and more important problems. Problems relating to budget, teacher negotiations and maintenance should be handled by the administration, but under the direction of the board.

ALFRED R. CAMPBELL

Democrat

Alfred R. Campbell, a Democrat, is a candidate for his second term on the board of education.

He is chairman of the third and mixed in administrative problems, and therefore do not have the time to get involved in broader and more important problems. Problems relating to budget, teacher negotiations and maintenance should be handled by the administration, but under the direction of the board.

1. I feel that the board should have a representative of the C.A.N.E.L. engineering program, which would help him in fulfilling the duties of a board member.

He has also been a Club Scoutmaster for five years and has served as a technical advisor to the RPI Hartford Graduate Center.

1. Advisory suggestions from the teachers should be encouraged by the Board of Education to establish educational policy.

2. The rundown condition of some schools and equipment and the shortage of books, physical education equipment and teaching aids indicate that non-salary expenditures have been too low. Now a bond issue is necessary to correct some of these inadequacies. Provision for these in the annual budgets is more efficient and economical.

3. I have no major suggestions for improvements in curriculum at this time. I do think it would be desirable to have a standing committee on curriculum and educational policy.

ANITA M. MURPHY

Republican

Mrs. Anita M. Murphy, a Republican, is unopposed for the term to November, 1968, vacated in July when Mrs. Katherine Bourn, Democrat, resigned. She is automatically assured election by a ruling of the secretary of state regarding minor representation. Mrs. Murphy, who lives at 355 Burnham St., is on the board of directors of the Buckland School P.T.A. and is secretary of the Junior Century Club. She graduated from Fitchburg State College, Brooklyn, N.Y., in 1954 and attended St. John University (N.Y.) Business School where she was employed as a business office representative with the New York Telephone Co. in 1955-56.

1. The classroom teacher, through a teacher organization, should be encouraged to speak up on educational policy. The board should have more attention. Perhaps staff may suggest items to be included in the board agenda, or the board may extend more time to be given to call bid for a Board of Education.

ROGER B. BAGLEY

Republican

Roger B. Bagley of 68 Dale Rd., a Manchester resident for 20 years, is making his first bid for a Board of Education.

1. I feel that physical education, particularly at the junior high level, should be given more attention. Perhaps staff may suggest items to be included in the board agenda, or the board may extend more time to be given to call bid for a Board of Education.

LEONARD SEADER

Democrat

Leonard Seader, 214 Richmond Dr., is a Democrat incumbent, running for his second term on the Board of Education. He is vice president of the First Hartford Realty Corp.

Seader is a former chairman of the Town Development Commission and is a former member of the Charter Revision Commission. A Winsted native, he has lived in Manchester since 1962.

He has a B.A. degree from Brown University and has done graduate study at Springfield College. He served as a technical sergeant in the U.S. Infantry and Medical Corps during World War II and saw service in the Western Pacific.

1. The responsibility for policy should rest with the elected representatives of the Board of Education. Teacher groups should be advisory and resource only in accomplishing a greater spread between salaried and non-salaried items and teacher negotiations.

For example, a revision of the State Aid Formula, incentive for communities that do not demonstrate excellence in special program areas, teacher-pupil ratios, and curriculum development; support of tuition costs for teachers required to take advanced training beyond the bachelor's level, either for certification or professional advancement.

3. More specialized instruction at the elementary level, particularly in math and reading, through use of specialists.

Expand Guidance Program, particularly at the junior high level. Requires having more guidance personnel.

Broaden physical education program through teaching a five-year or so program to implement recommendations made by the physical education staff. Evaluate junior and senior high curriculum to determine respective validity of courses offered in our present environment. Encourage a joint study between the educational policies committee and the respective professional staff resource groups.

4. Budget, school maintenance and teacher negotiations are major problems in Manchester. My experience on the board has been that all policy is subject to board approval.

Curriculum development during the past year has been jointly studied by the board and educational policies committee and teacher resource groups at several sessions, and it is my opinion that this will continue in the future.

DR. WALTER M. SCHARDT

Democrat

Dr. Walter M. Schardt, an ophthalmologist, is seeking his second term on the Board of Education.

A Democrat and the father of nine, the candidate cites his experience as a leader of Great Books discussions of educational problems, and also eight years of coaching experience with the Little League.

He is a 1942 graduate of Hofstra College and received his M.D. degree from New York University College of Medicine in 1945.

He lives at 31 Eastland Dr.

1. The board continually looks to its professional staff for creativity. Suggestions from individual teachers should be made to department head or principals. These suggestions should be accepted by administration, this people concerned with the overall picture, the administrator, can make reasonable recommendations to the board. If individual teachers are dissatisfied with these recommendations, they can present their problem to their teacher organization which may then elect to bring the matter to the attention of the board.

2. To achieve 85 to 15 per cent ratio, the Board of Directors would have to approve higher budgets for the Board of Education.

It is foolish to think that this ratio could be attained by lowering salaries. For the past ten years the boards have felt the teachers were well worth their salaries. When the board's budget is making his first bid for a Board of Education.

FRANK M. STAMLER

Democrat

Frank M. Stamler, a Democrat, is a candidate for his second term on the board of education.

He is chairman of the third and mixed in administrative problems, and therefore do not have the time to get involved in broader and more important problems. Problems relating to budget, teacher negotiations and maintenance should be handled by the administration, but under the direction of the board.

1. I feel that the board should have a representative of the C.A.N.E.L. engineering program, which would help him in fulfilling the duties of a board member.

He has also been a Club Scoutmaster for five years and has served as a technical advisor to the RPI Hartford Graduate Center.

1. Advisory suggestions from the teachers should be encouraged by the Board of Education to establish educational policy.

2. The rundown condition of some schools and equipment and the shortage of books, physical education equipment and teaching aids indicate that non-salary expenditures have been too low. Now a bond issue is necessary to correct some of these inadequacies. Provision for these in the annual budgets is more efficient and economical.

3. I have no major suggestions for improvements in curriculum at this time. I do think it would be desirable to have a standing committee on curriculum and educational policy.

FRANK M. STAMLER

Democrat

Frank M. Stamler, a Democrat, is a candidate for his second term on the board of education.

He is chairman of the third and mixed in administrative problems, and therefore do not have the time to get involved in broader and more important problems. Problems relating to budget, teacher negotiations and maintenance should be handled by the administration, but under the direction of the board.

1. I feel that the board should have a representative of the C.A.N.E.L. engineering program, which would help him in fulfilling the duties of a board member.

He has also been a Club Scoutmaster for five years and has served as a technical advisor to the RPI Hartford Graduate Center.

1. Advisory suggestions from the teachers should be encouraged by the Board of Education to establish educational policy.

2. The rundown condition of some schools and equipment and the shortage of books, physical education equipment and teaching aids indicate that non-salary expenditures have been too low. Now a bond issue is necessary to correct some of these inadequacies. Provision for these in the annual budgets is more efficient and economical.

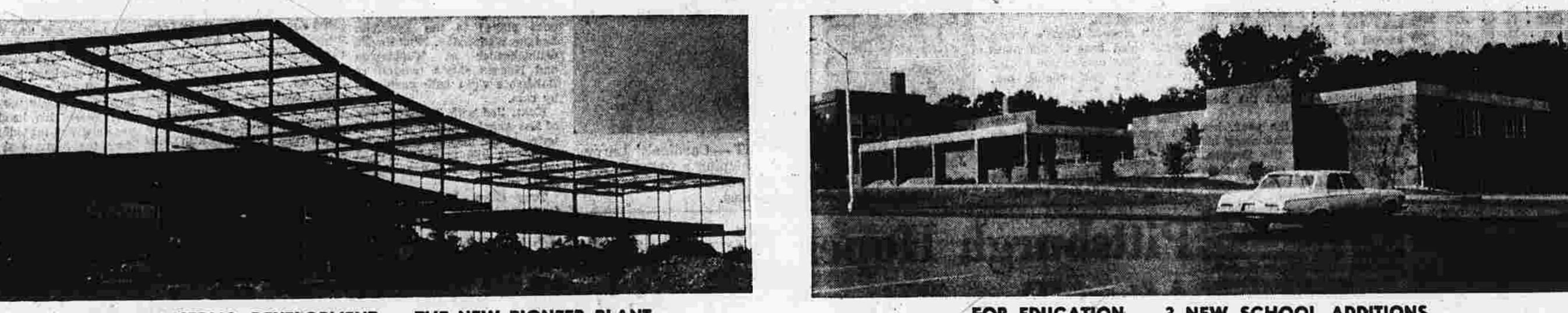
3. I have no major suggestions for improvements in curriculum at this time. I do think it would be desirable to have a standing committee on curriculum and educational policy.

Six Good Men

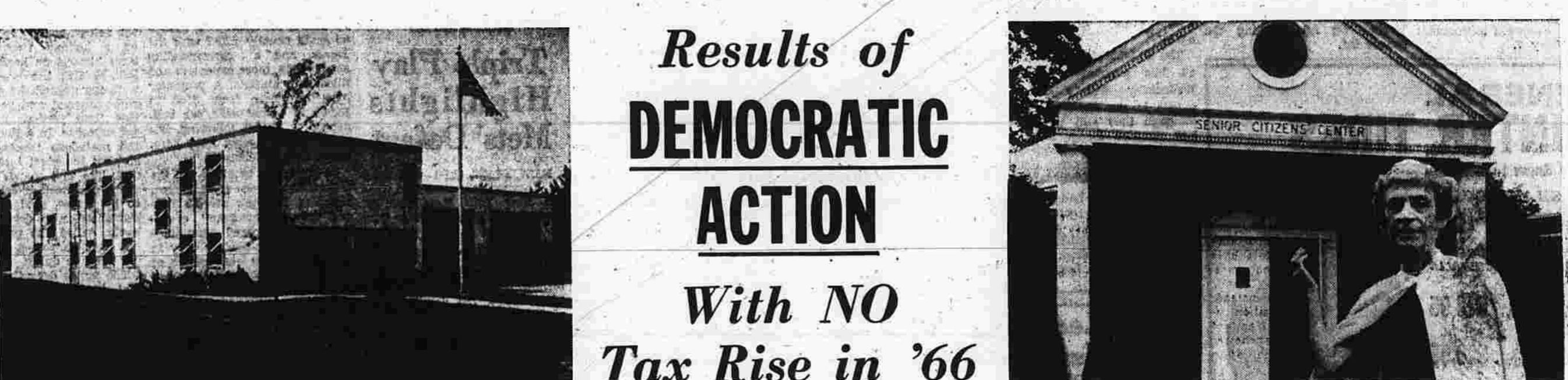


Olof L. Anderson Raymond L. Ellis William Fitzgerald John J. Hutchinson Hon. Francis Mahony Frank M. Stamler

Can Do A Lot For A Town!



FOR INDUSTRIAL DEVELOPMENT — THE NEW PIONEER PLANT



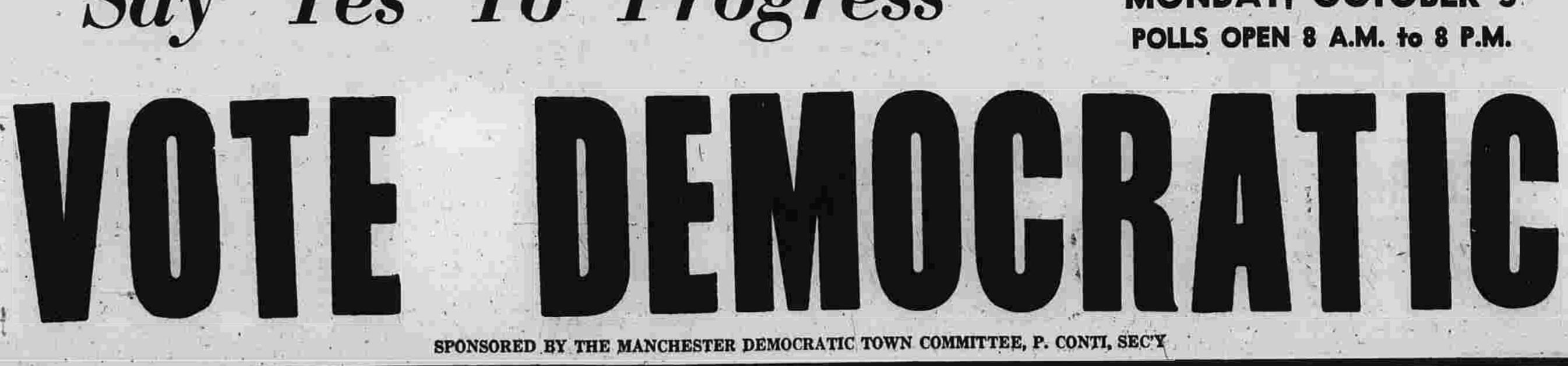
FOR EDUCATION — 3 NEW SCHOOL ADDITIONS



FOR FIRE PROTECTION — 2 NEW STATIONS



FOR SENIOR CITIZENS — HOUSING AND RECREATION



JUST FOR FUN — A BIG, NEW POOL

Results of DEMOCRATIC ACTION

With NO Tax Rise in '66

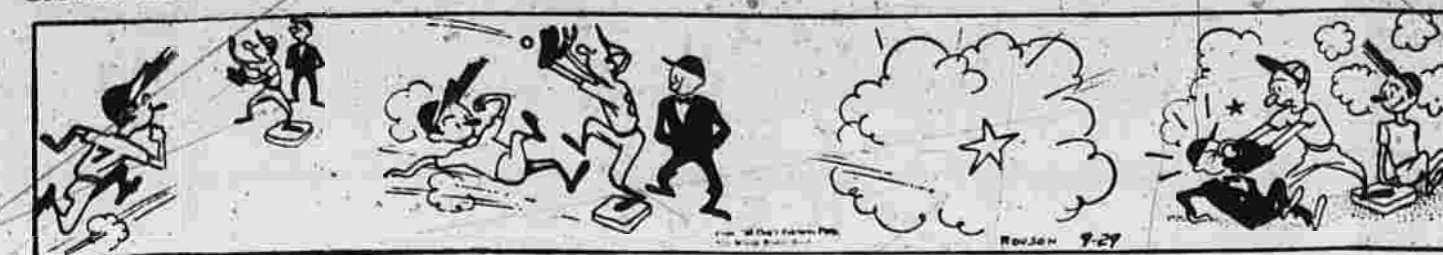
Say Yes To Progress

NOTE DEMOCRATIC

TOWN ELECTION: MONDAY, OCTOBER 3. POLLS OPEN 8 A.M. to 8 P.M.

SPONSORED BY THE MANCHESTER DEMOCRATIC TOWN COMMITTEE, P. CONT. SECY

LITTLE SPORTS



BUGGS BUNNY



ALLY OOP



PRISCILLA'S POP



WAYOUT



SHORT RIBS



BUZZ SAWYER



MICKY FINN



MR. ABERNATHY



MORTY MEEPLE

BY ROUSON OUR BOARDING HOUSE with MAJOR HOOPLE



BY ROUSON OUR BOARDING HOUSE with MAJOR HOOPLE



CARNIVAL BY DICK TURNER



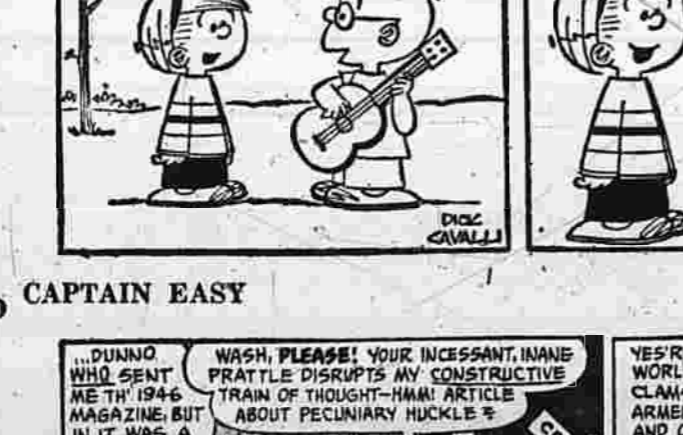
"Talk about immature! Freddy's 16 years old and still asks his father for advice!"



THE WILLETS BY WALT WETTERBERG



MORTY MEEPLE BY DICK CAVALLI



CAPTAIN EAST BY LESLIE TURNER



MR. ABERNATHY BY RALSTON JONES and FRANK RIDGEWAY DAVY JONES



MORTY MEEPLE BY LEFF and McWILLIAMS

Fill the Blanks

ACROSS 1. ... 2. ... 3. ... 4. ... 5. ... 6. ... 7. ... 8. ... 9. ... 10. ... 11. ... 12. ... 13. ... 14. ... 15. ... 16. ... 17. ... 18. ... 19. ... 20. ... 21. ... 22. ... 23. ... 24. ... 25. ... 26. ... 27. ... 28. ... 29. ... 30. ... 31. ... 32. ... 33. ... 34. ... 35. ... 36. ... 37. ... 38. ... 39. ... 40. ... 41. ... 42. ... 43. ... 44. ... 45. ... 46. ... 47. ... 48. ... 49. ... 50. ... 51. ... 52. ... 53. ... 54. ... 55. ... 56. ... 57. ... 58. ... 59. ... 60. ... 61. ... 62. ... 63. ... 64. ... 65. ... 66. ... 67. ... 68. ... 69. ... 70. ... 71. ... 72. ... 73. ... 74. ... 75. ... 76. ... 77. ... 78. ... 79. ... 80. ... 81. ... 82. ... 83. ... 84. ... 85. ... 86. ... 87. ... 88. ... 89. ... 90. ... 91. ... 92. ... 93. ... 94. ... 95. ... 96. ... 97. ... 98. ... 99. ... 100. ...

ANSWER TO PREVIOUS PUZZLE

EDWARDS ANSWERING SERVICE 649-0500 - 875-2519

CUNLIFFE MOTOR SALES

Automobiles For Sale

Lost and Found

Announcements

Personals

Trucks-Tractors

Trailer

CLASSIFIED ADVERTISING

CLASSIFIED ADVERTISING DEPT. HOURS 8 A.M. TO 5 P.M. COPY CLOSING TIME FOR CLASSIFIED ADVT. MONDAY THROUGH FRIDAY 10:30 A.M. - SATURDAY 9 A.M.

Trouble Reaching Our Advertiser? 24-Hour Answering Service Free to Herald Readers

HERALD BOX LETTERS For Your Information

Automobiles For Sale

Lost and Found

Announcements

Personals

Trucks-Tractors

Trailer

Business Services Offered

PROFESSIONAL Cleaning - Carpets, furniture, walls and floors - all cleaned in your home.

SALES AND Service on Ariens, Hahn Kollips, Jacobson lawn mowers.

RENEWING of burns, moth-holes, zippers repaired.

CONCRETE work - concrete work, sidewalks, patios, etc.

FLOOR FINISHING - FLOOR sanding and refinishing.

BONDS - Mortgages

EXCELLENT OPPORTUNITY - 40,000 gallons per month.

SUN OIL CO. 568-3400

Help Wanted - Female 35

THERE OUGHTA BE A LAW



Help Wanted - Female 35

Help Wanted - Female 35

Help Wanted - Female 35

Help Wanted - Female 35

Help Wanted - Female 35

Help Wanted - Female 35

Help Wanted - Female 35

Help Wanted - Female 35

Help Wanted - Female 35

Help Wanted - Female 35

Help Wanted - Female 35

Help Wanted - Female 35

Help Wanted - Female 35

Help Wanted - Female 35

Help Wanted - Female 35

Help Wanted - Female 35

Help Wanted - Female 35

Help Wanted - Female 35

SATURDAY MORNING INTERVIEWS ON OCTOBER 1

CLERK TYPIST for centrally located insurance claims office.

DELICATESSEN CLERKS FULL-TIME AND PART-TIME

THE CONNECTICUT MUTUAL LIFE INSURANCE CO.

WANTED - Full-time Broker

WANTED - Full-time Broker

WANTED - Full-time Broker

WANTED - Full-time Broker

WANTED - Full-time Broker

Help Wanted - Female 35

Help Wanted - Female 35

Help Wanted - Female 35

Help Wanted - Female 35

Help Wanted - Female 35

Help Wanted - Female 35

Help Wanted - Female 35

Help Wanted - Female 35

Help Wanted - Female 35

Help Wanted - Female 35

CLASSIFIED ADVERTISING

CLASSIFIED ADVERTISING DEPT. HOURS 8 A.M. TO 5 P.M.

COPY CLOSING TIME FOR CLASSIFIED ADVT. MONDAY THROUGH FRIDAY 10:30 A.M. - SATURDAY 8 A.M.

YOUR COOPERATION WILL BE APPRECIATED DIAL 643-2711

Continued From Preceding Page Help Wanted—Male 36

Help Wanted—Male 36 OIL DRIVER—Experienced oil driver for local fuel pump.

CUSTOMER COMMISSION SALESMAN JANITOR

PLUMBERS OR plumber's helpers experienced preferred.

KITCHEN SALESPERSON Here is an excellent opportunity to join Sears outstanding sales staff.

SEARS ROEBUCK and CO. MANCHESTER SHOPPING PARKS

Check Sears liberal employment program on commission and generous car expenses.

SEARS ROEBUCK & CO. MANCHESTER SHOPPING PARKS

WARRENBOURNE—Immediate opening available for reliable man over 21 with current local references.

OIL BURNER service man experienced man only apply.

PART-TIME WORK Morning 10-2 and 11-2 Apply

MCDONALD'S DRIVE-IN 46 W. Center St., Manchester

BIBBETH METAL Fabricator must be capable of layout and development on aircraft type brackets.

TOWELMAKERS—capable of production aimed blanking dies, turning dies, and in inspection stages.

PRINTERS wanted in 288-11th St., East Hartford, 288-6041.

TELEVISION TECHNICIAN GENERAL ELECTRIC

TV TECHNICIAN An expanding service department.

CAREER OPPORTUNITY Must be high school graduate with mechanical ability.

Help Wanted—Male 36 FULL AND part-time help needed for landscaping work.

WANTED TIMEKEEPER FOR AUTOMOTIVE SHOP

Maintenance Man Apply Mr. Birtles

TED TRUDON'S INC. TOLLAND TPK.

GROOMING and boarding all breeds, Harmony Hills, H. C. Thayer, 847-4000.

AKC ENGLISH SETTER pups, show prospects, females, whelped May 24, sired by Ch. Canberra Blue Shadow.

TWO FURRY kittens wanted like good homes, housebroken, free, 649-2625.

ROAD RACE set, hardy used, 2100-2100, 2100-2100.

RICE, STONE-FRUE loan, 215 Gravel, sand, fill, stone, manure, white sand box and patio sand, 643-9504.

SCREENED LOAM for the best in lawn and garden. Daily delivery, 643-9504.

MAN OR WOMAN to drive school bus, 7:30 a.m. to 2:30 p.m., good pay. Call after 5 p.m., 643-2831.

COUPLE OVER 30, to live in active older gentleman's home, pleasant conditions.

DRAWING TABLE 31x47, \$18. Call 643-9434 after 5 p.m.

SEWERAGE DISPOSAL ASSISTANT BLDG INSPECTOR

REAL ESTATE CAREER Our business has doubled in the last 6 months and will double again in the next 6 months.

MILLIONS OF RUSS have been cleaned with Blue Luster. America's finest. Rent electric shampoos \$1. The Sherwin Williams Co.

DRAFTING TABLE 31x47, \$18. Call 643-9434 after 5 p.m.

Boats and Accessories 46 19' MFG BOAT complete with 90 hp motor. Will finance if necessary, 649-2821.

Florists—Nurses 49 JAPANESE VEWS, 22 each, daily, 643-9434.

CANADIAN HEMLOCKS—dig your own, 22 each, call 644-384, 21 South St., Wapping.

HARDY CRANICHUMS, all colors, 75c each, in all colors. Open 7 days weekly and evenings. 643-9434.

Plumber experienced in new work. Top wages. Steady employment, overtime. Call 643-4523.

Household Goods 51 Engagement Broken YOUNG COUPLE WILL SACRIFICE 3 ROOMS LOVELY NEW FURNITURE AND APPLIANCES EVERYTHING FOR ONLY \$388.93

RELIABLE WOMAN would like caring for infant or preschool child, excellent area. References, 643-8887.

WOMAN would like to baby sit days in my home. Reasonable call 675-3381.

Dogs—Hrds—Pets 41 AKC GERMAN Shepherd puppies, pure whites, other beautifully marked, bred for temperament and vigor traits.

GROOMING and boarding all breeds, Harmony Hills, H. C. Thayer, 847-4000.

AKC ENGLISH SETTER pups, show prospects, females, whelped May 24, sired by Ch. Canberra Blue Shadow.

TWO FURRY kittens wanted like good homes, housebroken, free, 649-2625.

ROAD RACE set, hardy used, 2100-2100, 2100-2100.

RICE, STONE-FRUE loan, 215 Gravel, sand, fill, stone, manure, white sand box and patio sand, 643-9504.

SCREENED LOAM for the best in lawn and garden. Daily delivery, 643-9504.

MAN OR WOMAN to drive school bus, 7:30 a.m. to 2:30 p.m., good pay. Call after 5 p.m., 643-2831.

COUPLE OVER 30, to live in active older gentleman's home, pleasant conditions.

DRAFTING TABLE 31x47, \$18. Call 643-9434 after 5 p.m.

SEWERAGE DISPOSAL ASSISTANT BLDG INSPECTOR

REAL ESTATE CAREER Our business has doubled in the last 6 months and will double again in the next 6 months.

MILLIONS OF RUSS have been cleaned with Blue Luster. America's finest. Rent electric shampoos \$1. The Sherwin Williams Co.

DRAFTING TABLE 31x47, \$18. Call 643-9434 after 5 p.m.

Boats and Accessories 46 19' MFG BOAT complete with 90 hp motor. Will finance if necessary, 649-2821.

Florists—Nurses 49 JAPANESE VEWS, 22 each, daily, 643-9434.

CANADIAN HEMLOCKS—dig your own, 22 each, call 644-384, 21 South St., Wapping.

HARDY CRANICHUMS, all colors, 75c each, in all colors. Open 7 days weekly and evenings. 643-9434.

Plumber experienced in new work. Top wages. Steady employment, overtime. Call 643-4523.

Rooms Without Bath 59 ROOM with kitchen privileges, central location, Mrs. Dorsey, 14 Arch St.

PLEASANT room to rent, privileges, parking, call 645-9228 after 6 p.m.

FOR RENT—From room, centrally located, free parking, 48 Birch St., 645-7129.

MODERN room, private bath, well heated, parking, rent room privately, call 645-9686.

WELL HEATED ROOM, private entrance, continuous hot water and shower, parking, gentleman, 101 Chestnut St.

COMFORTABLE ROOM for gentlemen, separate entrance, 645-2460.

FURNISHED light housekeeping room for lady, adult only, 645-8388.

INDUSTRIAL Space—4,000-6,000 square feet, first floor, centrally located, 200-2104.

WE HAVE customers waiting for the rental of your apartment, handy location, 645-8129.

RENT MAN in need of rental. Have tenants willing to sign lease, only rent, 648-6454 or 643-9121.

LOOKING for anything in real estate rentals—apartments, stores, multi-unit dwellings, 645-8129.

FREE storage unit wanted. Free delivery anywhere in Connecticut. Original price for all this merchandise was \$548.93. Some for rent, some for sale. If all included plus extra truck, a main store. Appliances are reconditioned and fully guaranteed. Phone for Appointment: 247-0358 or 527-9003.

SEE IT DAY OR NIGHT ONLY \$12.50. If you have no means of transportation I'll send my auto for you. No obligation on your part whatsoever.

HEATED 3 ROOM apartment, 2 1/2 baths, excellent condition, 643-9118 between 54-30.

THREE ROOM apartment, third floor, stove and refrigerator, full bathroom, recreation living room, 645-8270.

ATTRACTIVE 4-room apartment, convenient location, working couple, no children, 645-8419.

DELICIOUS 2-bedroom duplex apartment, 1 1/2 baths, appliances and utilities, \$15. 2 D. Real Estate, 643-9118.

THREE ROOM modern apartment, heated, private porch, and entrance, centrally located, 643-9444.

LOVELY CLEAN 4 room apartment, centrally located, 2 1/2 baths, full kitchen, hot water, disposal, refrigerator, nice location, \$150. Monthly, 649-0305, 643-8419.

BIRCH ST.—4 rooms, second floor, fully reconditioned, no furnace, 649-4849.

FOUR ROOMS and garage, close to shopping, churches, schools, Adults preferred. Available October 1, 649-5788.

THREE ROOMS, stove refrigerator, centrally located, 12 1/2 p.m., 649-8404.

Apartment Buildings For Sale 69 MANCHESTER—Two modern multi-unit apartment buildings, centrally located, fully equipped, top locations, fully leased. Top location, 200-2104. 2-car garage, 649-3464.

ROCKVILLE—Building with a going paint and wallpaper business including stock. Fully equipped, 2-car garage. Price owner is considering retirement. Ideal. Terms arranged. Prestige Real Estate, 288-8227. Mrs. Beardsley 389-6111.

RESTAURANTS—Your choice of four. Priced \$3,000, \$4,000, \$7,000 and one including real estate, \$10,000. For more information call Publicist Agency, 643-8464.

DESIRABLE store or office space, ground floor, clean, attractive and reasonable. Inquire Manager, State Theatre, 643-7832.

INDUSTRIAL Space—4,000-6,000 square feet, first floor, centrally located, 200-2104. Will subdivide. For particulars call Warren E. Howland, Realtor, 303 Main St., 643-1118.

STORE—center of Manchester, newly remodeled store, front and interior, reasonable rentals. Brokers invited, 322-2154.

3,000 SQUARE FEET commercial warehouse, 67 Collins, 643-8129.

67 PRINCETON ST.—3 bedrooms, four 1/2 baths, cedar closet, oil hot water heat, custom built. Immediate occupancy. Mrs. Beardsley 389-6111.

CONCORD RD.—beautiful ranch, large living room, formal dining room, cabinet kitchen, 2 bedrooms, recreation living room, landscaped yard. Marjorie E. Robertson, Realtor, 645-8464.

NEW TWO FAMILY flat—84 Bowers school area, large kitchen, 2 1/2 living rooms, separate bath, 2 bedrooms. Also older 2-family Call Olesky, 649-4297.

GLENDALE RD. Open Daily and Sundays

NEW 6-room ranch with 3-car garage, excellent condition, 2 bedrooms, 2 1/2 baths, recreation living room, landscaped yard. Marjorie E. Robertson, Realtor, 645-8464.

SPLIT LEVEL—4 1/2 rooms, 3 bedrooms, modern kitchen with built-in, tree lot, room, one car garage, patio, \$19,900. Publicist Agency, Realtors, 649-3464.

NEW LISTING—Manchester, 7 room and 4 1/2 bath, centrally located, to be built. Call Publicist Agency, Realtors, 649-3464.

MANCHESTER—5 1/2 room custom built ranch, fireplace, oil hot water heat, paneled 2 1/2 room, call Mrs. Beardsley, 389-6111.

MANCHESTER—Large 7 room ranch, 2 1/2 baths, modern kitchen, full bathroom, 2 1/2 bedrooms, 2 1/2 car garage, large lot, with fruit trees, \$29,900. Publicist Agency, Realtors, 649-3464.

116,000—5 1/2 room ranch, fireplace, built-in, extra large lot, call Mrs. Beardsley, 389-6111.

MANCHESTER—4 and 4 1/2 room, centrally located, 2 bedrooms, 2 1/2 baths, 2 car garage, wood lot, call Mrs. Beardsley, 389-6111.

MANCHESTER—New listing, centrally located, 2 bedrooms, 2 1/2 baths, full bathroom, one car garage, wood lot, call Mrs. Beardsley, 389-6111.

VERNON—large 8 room Colonial, 3 bedrooms, living room, good fireplace, dining room, kitchen, 2 1/2 baths, one car garage, wood lot, call Mrs. Beardsley, 389-6111.

BOLTON—\$130,000, immaculate 4 room ranch, large landscaped lot, New modern kitchen, real value. Bel Air Real Estate, Realtors, 643-8332.

PICTURE BOOK 4 room Ranch with enclosed breezeway and full kitchen, 2 1/2 baths, full bathroom, 2 bedrooms, 15 x 18 kitchen, full bath, 2 bedrooms, 2 car garage, large lot, call Mrs. Beardsley, 389-6111.

Porter St. Area ATTRACTIVE 8-room center entrance, central hallway, Garrison Colonial, centrally located, fully equipped, top locations, fully leased. Top location, 200-2104. 2-car garage, 649-3464.

WARREN E. HOWLAND Realtor 850 Main St. 643-1108

MANCHESTER—near Main St., 4 family home, excellent income producer, 4 rooms in each apartment. Owner wants to sell. Mrs. Beardsley 389-6111.

MANCHESTER—modern, immaculate 8 room Cape, 1 1/2 car garage, 2 1/2 baths, screened porch, convenient location. Bel Air Real Estate, Realtors, 643-8332.

MANCHESTER—Like new 2 family flat and duplex built by family, spacious rooms, separate heating system, high quality workmanship. Opportunity to own a home. Publicist Agency, Realtors, 649-3464.

MANCHESTER—7 1/2 room Cape, 4 or 8 bedrooms, recreation living room, 2 1/2 car garage, 18,000. Publicist Agency, Realtors, 649-3464.

FIVE BEDROOMS, 2 full bathrooms, built-in, built-in, built-in, 2 fireplaces, walk-out basement, screened porch, 2 1/2 car garage, 2 1/2 baths, aluminum siding, storm windows, sewers, disposal, 14 bedrooms, 2 1/2 car garage, 18,000. Publicist Agency, Realtors, 649-3464.

MANCHESTER—Cape, 6 bedrooms, 2 1/2 baths, built-in, built-in, built-in, 2 fireplaces, walk-out basement, screened porch, 2 1/2 car garage, 2 1/2 baths, aluminum siding, storm windows, sewers, disposal, 14 bedrooms, 2 1/2 car garage, 18,000. Publicist Agency, Realtors, 649-3464.

MANCHESTER Green area—New listing, 6 room Cape, immaculate condition, garage, 2 1/2 car garage, 2 1/2 baths, 18,000. Publicist Agency, Realtors, 649-3464.

BOWERS AREA—overlaid cape of eight rooms, six on one floor. Ideal residential section, good location, 2 1/2 car garage, 2 1/2 baths, 18,000. Publicist Agency, Realtors, 649-3464.

MANCHESTER—Immaculate 2 1/2 car garage, excellent condition, 2 bedrooms, 2 1/2 baths, 18,000. Publicist Agency, Realtors, 649-3464.

WESLEY R. SMITH CONSTRUCTION CO. 643-1557

RANCH—3 rooms, 3 bedrooms, 2 full baths, 2 1/2 car garage, 2 1/2 baths, normal dining room, screened in porch, garage, \$20,900. Publicist Agency, Realtors, 649-3464.

MANCHESTER—Large 7 room ranch, 2 1/2 baths, modern kitchen, full bathroom, 2 1/2 bedrooms, 2 1/2 car garage, large lot, with fruit trees, \$29,900. Publicist Agency, Realtors, 649-3464.

116,000—5 1/2 room ranch, fireplace, built-in, extra large lot, call Mrs. Beardsley, 389-6111.

MANCHESTER—4 and 4 1/2 room, centrally located, 2 bedrooms, 2 1/2 baths, 2 car garage, wood lot, call Mrs. Beardsley, 389-6111.

MANCHESTER—New listing, centrally located, 2 bedrooms, 2 1/2 baths, full bathroom, one car garage, wood lot, call Mrs. Beardsley, 389-6111.

VERNON—large 8 room Colonial, 3 bedrooms, living room, good fireplace, dining room, kitchen, 2 1/2 baths, one car garage, wood lot, call Mrs. Beardsley, 389-6111.

BOLTON—\$130,000, immaculate 4 room ranch, large landscaped lot, New modern kitchen, real value. Bel Air Real Estate, Realtors, 643-8332.

PICTURE BOOK 4 room Ranch with enclosed breezeway and full kitchen, 2 1/2 baths, full bathroom, 2 bedrooms, 15 x 18 kitchen, full bath, 2 bedrooms, 2 car garage, large lot, call Mrs. Beardsley, 389-6111.

MANCHESTER—7 room Cape, 4 or 8 bedrooms, recreation living room, 2 1/2 car garage, 18,000. Publicist Agency, Realtors, 649-3464.

NEW 6-room ranch with 3-car garage, excellent condition, 2 bedrooms, 2 1/2 baths, recreation living room, landscaped yard. Marjorie E. Robertson, Realtor, 645-8464.

Houses For Sale 72 HOUSES FOR SALE—2 family, 8 and 6 data, on bus line, \$17,900. Publicist Agency, Realtors, 649-3464.

PORTER ST. AREA ATTRACTIVE 8-room center entrance, central hallway, Garrison Colonial, centrally located, fully equipped, top locations, fully leased. Top location, 200-2104. 2-car garage, 649-3464.

WARREN E. HOWLAND Realtor 850 Main St. 643-1108

MANCHESTER—near Main St., 4 family home, excellent income producer, 4 rooms in each apartment. Owner wants to sell. Mrs. Beardsley 389-6111.

MANCHESTER—modern, immaculate 8 room Cape, 1 1/2 car garage, 2 1/2 baths, screened porch, convenient location. Bel Air Real Estate, Realtors, 643-8332.

MANCHESTER—Like new 2 family flat and duplex built by family, spacious rooms, separate heating system, high quality workmanship. Opportunity to own a home. Publicist Agency, Realtors, 649-3464.

MANCHESTER—7 1/2 room Cape, 4 or 8 bedrooms, recreation living room, 2 1/2 car garage, 18,000. Publicist Agency, Realtors, 649-3464.

FIVE BEDROOMS, 2 full bathrooms, built-in, built-in, built-in, 2 fireplaces, walk-out basement, screened porch, 2 1/2 car garage, 2 1/2 baths, aluminum siding, storm windows, sewers, disposal, 14 bedrooms, 2 1/2 car garage, 18,000. Publicist Agency, Realtors, 649-3464.

MANCHESTER—Cape, 6 bedrooms, 2 1/2 baths, built-in, built-in, built-in, 2 fireplaces, walk-out basement, screened porch, 2 1/2 car garage, 2 1/2 baths, aluminum siding, storm windows, sewers, disposal, 14 bedrooms, 2 1/2 car garage, 18,000. Publicist Agency, Realtors, 649-3464.

MANCHESTER Green area—New listing, 6 room Cape, immaculate condition, garage, 2 1/2 car garage, 2 1/2 baths, 18,000. Publicist Agency, Realtors, 649-3464.

BOWERS AREA—overlaid cape of eight rooms, six on one floor. Ideal residential section, good location, 2 1/2 car garage, 2 1/2 baths, 18,000. Publicist Agency, Realtors, 649-3464.

MANCHESTER—Immaculate 2 1/2 car garage, excellent condition, 2 bedrooms, 2 1/2 baths, 18,000. Publicist Agency, Realtors, 649-3464.

WESLEY R. SMITH CONSTRUCTION CO. 643-1557

RANCH—3 rooms, 3 bedrooms, 2 full baths, 2 1/2 car garage, 2 1/2 baths, normal dining room, screened in porch, garage, \$20,900. Publicist Agency, Realtors, 649-3464.

MANCHESTER—Large 7 room ranch, 2 1/2 baths, modern kitchen, full bathroom, 2 1/2 bedrooms, 2 1/2 car garage, large lot, with fruit trees, \$29,900. Publicist Agency, Realtors, 649-3464.

116,000—5 1/2 room ranch, fireplace, built-in, extra large lot, call Mrs. Beardsley, 389-6111.

MANCHESTER—4 and 4 1/2 room, centrally located, 2 bedrooms, 2 1/2 baths, 2 car garage, wood lot, call Mrs. Beardsley, 389-6111.

MANCHESTER—New listing, centrally located, 2 bedrooms, 2 1/2 baths, full bathroom, one car garage, wood lot, call Mrs. Beardsley, 389-6111.

VERNON—large 8 room Colonial, 3 bedrooms, living room, good fireplace, dining room, kitchen, 2 1/2 baths, one car garage, wood lot, call Mrs. Beardsley, 389-6111.

BOLTON—\$130,000, immaculate 4 room ranch, large landscaped lot, New modern kitchen, real value. Bel Air Real Estate, Realtors, 643-8332.

PICTURE BOOK 4 room Ranch with enclosed breezeway and full kitchen, 2 1/2 baths, full bathroom, 2 bedrooms, 15 x 18 kitchen, full bath, 2 bedrooms, 2 car garage, large lot, call Mrs. Beardsley, 389-6111.

MANCHESTER—7 room Cape, 4 or 8 bedrooms, recreation living room, 2 1/2 car garage, 18,000. Publicist Agency, Realtors, 649-3464.

The Open Forum

Communications for publication in the Open Forum will not be guaranteed publication if they contain more than 800 words. The Herald reserves the right to select any matter that may be libelous or which is in bad taste. Free expression of political views is desired by contributors of this character but letters which are defamatory or abusive will be rejected.

'Bedford With Liquor' To the Editor, The copy of the W.P.T.U. Temporary Board charter which you published in your issue of September 21, 1966, has a number of errors. I am sure that you will correct them in your next issue. I am sure that you will correct them in your next issue.

'Kind of Man We Need' To the Editor, I have read with interest the statement of one of the newer town residents who is asking the voters of Bolton to elect him to our Board of Directors. It is very difficult to understand how a man who wants to be placed on our town board can admit his lack of knowledge of the town of Bolton. It is very difficult to understand how a man who wants to be placed on our town board can admit his lack of knowledge of the town of Bolton.

'Politically Ambitious' To the Editor, I have read with interest the statement of one of the newer town residents who is asking the voters of Bolton to elect him to our Board of Directors. It is very difficult to understand how a man who wants to be placed on our town board can admit his lack of knowledge of the town of Bolton. It is very difficult to understand how a man who wants to be placed on our town board can admit his lack of knowledge of the town of Bolton.

'Part of His Nature' To the Editor, I wish to recommend to the voters of Bolton the resignation of the Board of Education. I wish to recommend to the voters of Bolton the resignation of the Board of Education. I wish to recommend to the voters of Bolton the resignation of the Board of Education.

'I am not a Communist' To the Editor, I wish to recommend to the voters of Bolton the resignation of the Board of Education. I wish to recommend to the voters of Bolton the resignation of the Board of Education. I wish to recommend to the voters of Bolton the resignation of the Board of Education.

Automatic Transmission Trouble? Save with WUNDER ONE-CENT IN THE BIG-DIG-1 DAY ORIGINAL 1% SALE. Starts Thursday October 13. America's Greatest Drug Store Event!

Manchester Parkade. Save with WUNDER ONE-CENT IN THE BIG-DIG-1 DAY ORIGINAL 1% SALE. Starts Thursday October 13. America's Greatest Drug Store Event!

About Town YWCA Plans 11 Classes

The Amos Lake Improvement Association will meet Friday at 8 p.m. at the Community Club House, Amos Lake. The secretary, Mrs. Ruth Hickox, will be at the Club House at 7 p.m. to explain to any interested person the Association's program for buying Amos Lake.

School Board Candidates Reply

Community Y unless otherwise specified, and any class without sufficient enrollment may be cancelled. These are the classes and the instructors.

Camera Shy

NEW ORLEANS, La. (AP)—A bull trotted off the set while a movie crew was filming a television commercial in the French quarter Thursday—setting off a high-stylish chase.

Second American Ousted by Soviets

MOSCOW (AP)—An American was "trapped" by plain measures of punishment only in rare cases, particularly when expelled from the Soviet Union.

CIA Activity Charged

WASHINGTON (AP)—The Central Intelligence Agency and CIA activities were charged today by a group of anti-communists.

UAC Plans Employment Hike in '67

EAST HARTFORD (AP)—Pratt & Whitney Aircraft announced plans today to increase its Connecticut employment by 10 per cent in 1967.

Youth Held In Arizona Coed's Death

TEMPE, Ariz. (AP)—An 18-year-old Tempe youth was arrested today in connection with the knife slaying Sept. 21 of a young woman at Bradley University.

Valuable Items Taken From Car

An amplifier and typewriter valued at \$220 was stolen Wednesday from the back seat of a car owned by Mike Heid, a broadcaster for WINF radio station, Manchester.

Here's Pepsi-Cola 6-pack convenience, without the bother of bottle deposits and carting back empties.

Same great Pepsi taste — bold, clean, alive. Follow the arrow to your favorite store, and pick up Pepsi and Diet Pepsi-Cola in 10 oz. tall one-way bottles.

NO. 1 IN MANCHESTER IN ONE-WAY SALES... PEPSI-COLA!

Advertisement for Pepsi-Cola featuring a large image of a 6-pack of one-way bottles and promotional text.

Hurricane Hits Cuba With Head-On Punch

MIAMI, Fla. (AP)—Hurricane Inez fell on Cuba with savage fury today and its heavy soggy wake a communications blackout may have concealed a great human tragedy in Haiti's "Valley of Death."

Katzenbach Gets OK for New Position

WASHINGTON (AP)—With the praise of both Republican and Democratic leaders, the Senate today approved Nicholas Katzenbach as No. 2 man in the State Department.

Escaping Hippo Scatters Crowd At N.Y. Airport

NEW YORK (AP)—A young hippopotamus broke out of its cage at Kennedy airport today and charging into a crowded car garage, scattering some 20 workers in his wake.

B52s Hit Viet Nam With Twin Punch

SAIGON, South Viet Nam (AP)—B52 bombers delivered for the Communists fighting on the southern edge of the zone dividing North and South Viet Nam.

Dempsey and Gengras Disagree on Record

HARTFORD (AP)—Gov. John Dempsey and Clayton Gengras, his Republican opponent in the approaching gubernatorial election, are both pointing to the record of the present Democratic administration.

Harden Man's Car Reduced to Rubble

Chunks of metal were hurled 100 feet and this was what was left of a Harden man's car after a tank of liquid petroleum exploded in its trunk last night.



Haiti's Fate Is Unknown; Toll at 88. MIAMI, Fla. (AP)—Hurricane Inez fell on Cuba with savage fury today and its heavy soggy wake a communications blackout may have concealed a great human tragedy in Haiti's "Valley of Death."

Court Backs Expulsion of Mo-Haired Boys. DALLAS, Tex. (AP)—A U.S. District Court judge today ruled that the Dallas school system has the authority to deny admission to high schools to boys whose hair is too long.

Dietrichsen Surrenders. JAMES L. Dietrichsen, 21, of 299 Main St., who escaped from Police Headquarters yesterday escorted by Det. Leo Grover shortly after he appeared at headquarters accompanied by his attorney.

City Merger? NEW LONDON (AP)—City Councilman Harvey N. Mallove, who is almost certain to become mayor Monday, said today one of his first acts will be to name...

Welfare Differences. HARTFORD (AP)—The Republican candidate for governor, Air Force Phantoms made several strikes on a storage area inside the demilitarized zone and pilots reported hits with napalm and 500-pound bombs which touched off secondary explosions and a fire.

Bulletin. THE BACKS FULL ACTION. CHICAGO (AP)—Former President Dwight D. Eisenhower said today that he would not be asked to make an immediate application of "no ifs and no buts" to a question whether he proposed use of nuclear weapons.

